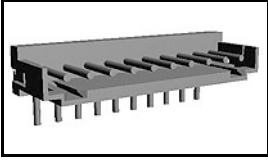


1-292253-1 Product Details

[Share](#) [Print](#) [Email](#)




1-292253-1

TE Internal Number: 1-292253-1

 Active

[View 3D PDF](#)

2mm AMP CT Connectors

 Always EU RoHS/ELV Compliant
(Statement of Compliance)

Product Highlights:

- Wire-to-Board
- Applies To Printed Circuit Board
- Connector
- Header
- Header Type = Partially Shrouded

[View all Features](#)

Quick Links

- ▶ [Pricing & Availability](#)
- ▶ [Search for Tooling](#)
- ▶ [View Mating Products \(3\)](#)
- ▶ [Product Feature Selector](#)
- ▶ [Contact Us About This Product](#)

[Add to My Part List](#)

[Request Sample](#)

[Find Similar Products](#)

[Buy Product](#)

Documentation & Additional Information

Product Drawings:

- [POST HEADER ASS'Y HORIZONTAL TYPE \(AMP CT CONNECTOR ...\)](#) (PDF, English)

Catalog Pages/Data Sheets:

- [2.0MM_AMP_CT_CONNECTOR_SERIES_QUICK_REF_GUIDE](#) (PDF, English)

Product Specifications:

- None Available

Application Specifications:

- None Available

Instruction Sheets:

- None Available

CAD Files: (CAD Format & Compression Information)

- [2D Drawing](#) (DXF, Version 0)
- [3D Model](#) (IGES, Version 0)
- [3D Model](#) (STEP, Version 0)

[List all Documents](#)

Additional Product Images:

- [Typical Application](#)

Related Products:

- [Tooling](#)
- [Mating Products \(3\)](#)

Product Features (Please use the Product Drawing for all design activity)

Product Type Features:

- [Product Type](#) = Connector
- [Connector Type](#) = Header
- [Termination Method to PC Board](#) = Through Hole - Solder
- [PCB Mounting Orientation](#) = Right Angle
- [PCB Mount Alignment](#) = Without
- [PCB Mount Retention](#) = With
- [PCB Mount Retention Type](#) = Kinked Leg(s)
- [Shrouded](#) = Yes - Partial
- [Sealed](#) = No
- [UL File Number](#) = E28476
- [CSA File Number](#) = LR 7189

Electrical Characteristics:

- [Contact - Rated Current \(A\)](#) = 4

Housing Features:

- [Connector Style](#) = Plug
- [Centerline \(mm \[in\]\)](#) = 2.00 [0.079]
- [Housing Color](#) = Natural
- [UL Flammability Rating](#) = UL 94V-0

Configuration Features:

- [Number of Positions](#) = 11
- [Number of Rows](#) = 1

Industry Standards:

- [RoHS/ELV Compliance](#) = RoHS compliant, ELV compliant
- [Lead Free Solder Processes](#) = Wave solder capable to 260°C, Wave solder capable to 240°C, Wave solder capable to 265°C
- [RoHS/ELV Compliance History](#) = Always was RoHS

- Operating Voltage Reference = AC/DC, AC, DC
- Operating Voltage (VAC) = 125
- Operating Voltage (VDC) = 125

Termination Features:

- Wire/Cable Size (AWG) = 22 - 28
- Tail Orientation = In-line
- Tail Length (mm [in]) = 3.2 [0.126]

Dimensions:

- Mating Post Length (mm [in]) = 4.50 [0.177]
- PCB Thickness, Recommended (mm [in]) = 0.80 - 1.60 [0.031 - 0.063]
- Length (X-Axis) (mm [in]) = 23.80 [0.937]
- Width (Z-Axis) (mm [in]) = 4.00 [0.157]
- Profile Height (Y-Axis) (mm [in]) = 8.80 [0.346]

Body Features:

- Header Type = Partially Shrouded
- Mating Retention = Without

Contact Features:

- Contact Type = Pin
- Contact Plating, Mating Area, Material = Tin
- Contact Plating, Mating Area, Thickness (μm [μin]) = 1 [39.37]
- Contact Plating, Termination Area, Material = Tin
- Contact Plating, Termination Area, Thickness (μm [μin]) = 1 [40]

- compliant
- Agency/Standard = CSA, UL

Environmental:

- Operating Temperature ($^{\circ}\text{C}$ [$^{\circ}\text{F}$]) = -40 - +105 [-40 - +221]

Conditions for Usage:

- Applies To = Printed Circuit Board

Operation/Application:

- Application Use = Wire-to-Board
- Contact Transmits (Typical Application) = Signal (Data)
- Pick and Place Cover = Without

Packaging Features:

- Packaging Method = Bag, Box

Other:

- Brand = AMP

Corporate Information

- [About TE](#)
- [Investors](#)
- [News Room](#)
- [Supplier Portal](#)
- [Careers](#)
- [Terms & Conditions](#)
- [Privacy Policy](#)

Quick Links

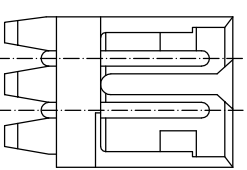
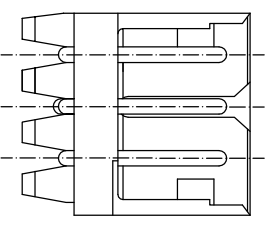
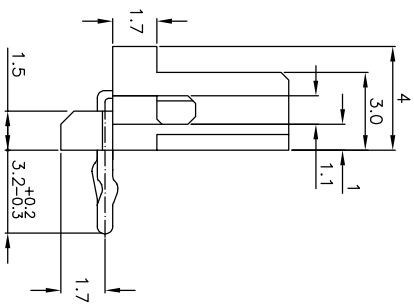
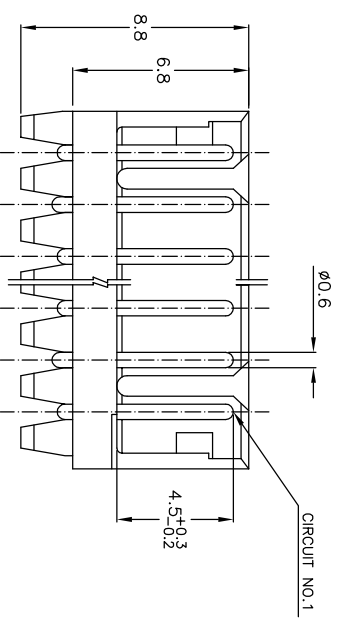
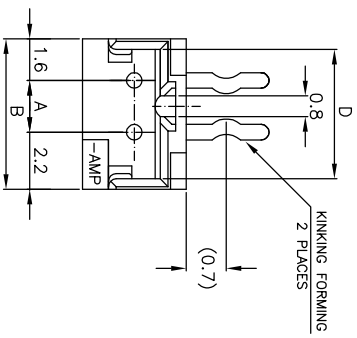
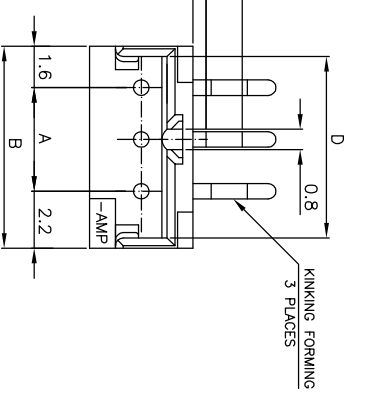
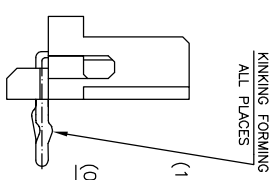
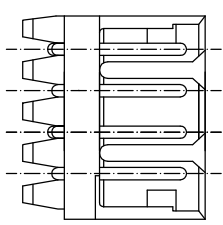
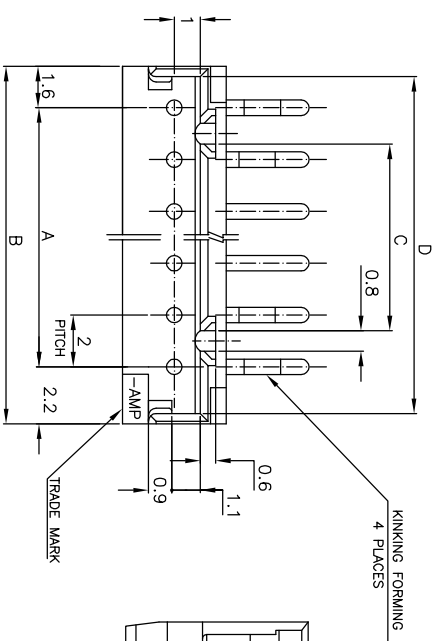
- [Distributor Inventory](#)
- [Product Cross Reference](#)
- [Documents & Drawings](#)
- [Product Compliance Support Center](#)
- [Site Map](#)

Customer Support

- [Email or Chat With Us](#)
- [Find a Phone Number](#)
- [Knowledge Base](#)
- [Manage Your Account](#)

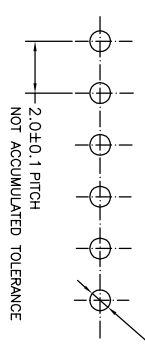
Keep Me Informed





- NOTES:
- MATERIAL: NYLON 66 (UL94V-0)
POST - TIN BRASS
 - APPLICABLE RECEPTACLE P/N 173977
 - THIS PART HAS BEEN OBSOLETE.

7-292253-4	5-292253-3	3-292253-1	1-292253-5	15	28	31.8	25.2	31.0
7-4	5-3	3-4	1-4	14	26	29.8	23.2	29.0
7-3	5-3	3-3	3-1	13	24	27.8	21.2	27.0
7-2	5-2	3-2	2-1	12	22	25.8	19.2	25.0
7-1	5-1	3-1	1-1	11	20	23.8	17.2	23.0
7-0	5-0	3-0	0-1	10	18	21.8	15.2	21.0
6-9	4-4	2-2	0-9	9	16	19.8	13.2	19.0
6-8	4-4	2-2	0-8	8	14	17.8	11.2	17.0
6-7	4-4	2-2	0-7	7	12	15.8	9.2	15.0
6-6	4-4	2-2	0-6	6	10	13.8	7.2	13.0
6-5	4-4	2-2	0-5	5	8	11.8	5.2	11.0
6-4	4-4	2-2	0-4	4	6	9.8	3.2	9.0
6-3	4-4	2-2	0-3	3	4	7.8	1.2	7.0
6-2	4-4	2-2	0-2	2	2	5.8	0.2	5.0
6-1	4-4	2-2	0-1	1	0	3.8	0.2	3.0
6-0	4-4	2-2	0-0	0	0	1.8	0.2	1.0
6-292253-2	4-292253-2	2-292253-2	292253-2	2	2	5.8	—	5.0



RECOMMENDABLE PCB LAYOUT
(PCB THK:0.8-1.6)

TOLERANCES UNLESS OTHERWISE SPECIFIED:

10 >	*	±0.2
30 >	*	±0.25
100 >	*	±0.3
ANGLE	>30	±3

THIS DRAWING IS A CONTROLLED DOCUMENT.

DIMENSIONS:	MM
TOLERANCES UNLESS OTHERWISE SPECIFIED:	±
0 PIC	±
1 PIC	±
2 PIC	±
3 PIC	±
4 PIC	±
ANGLES	±

MATERIAL	SEE NOTE
FINISH	SEE NOTE
WEIGHT	—

DMN	S.XU	31JAN03
CHK	S.YAO	31JAN03
APD	T.SASAKI	31JAN03
PRODUCT SPEC	108-60016	
APPLICATION SPEC		
WEIGHT		
CUSTOMER DRAWING		

SIZE	A3
DATE CODE	00779
DRAWING NO	292253
SCALE	5:1
SHEET	1
OF	1
REV	A

POST HEADER ASS'Y HORIZONTAL TYPE
(AMP CT CONNECTOR 2mm PITCH)

Tyco Electronics Corporation
SHANGHAI, CHINA