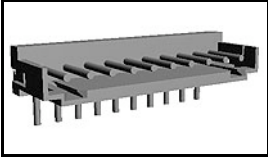


## 292253-9 Product Details

[Share](#) [Print](#) [Email](#)



**292253-9**

TE Internal Number: 292253-9

 **Active**

 [View 3D PDF](#)

### 2mm AMP CT Connectors

 **Always EU RoHS/ELV Compliant**  
(Statement of Compliance)

#### Product Highlights:

- Wire-to-Board
- Applies To Printed Circuit Board
- Connector
- Header
- Header Type = Partially Shrouded

[View all Features](#)

### Quick Links

- ▶ [Pricing & Availability](#)
- ▶ [Search for Tooling](#)
- ▶ [View Mating Products \(3\)](#)
- ▶ [Product Feature Selector](#)
- ▶ [Contact Us About This Product](#)

[Add to My Part List](#)

[Request Sample](#)

[Find Similar Products](#)

[Buy Product](#)

### Documentation & Additional Information

#### Product Drawings:

- [POST HEADER ASS'Y HORIZONTAL TYPE \(AMP CT CONNECTOR ...](#) (PDF, English)

#### Catalog Pages/Data Sheets:

- [2.0MM\\_AMP\\_CT\\_CONNECTOR\\_SERIES\\_QUICK\\_REF\\_GUIDE](#) (PDF, English)

#### Product Specifications:

- None Available

#### Application Specifications:

- None Available

#### Instruction Sheets:

- None Available

#### CAD Files: (CAD Format & Compression Information)

- [2D Drawing](#) (DXF, Version O)
- [3D Model](#) (IGES, Version O)
- [3D Model](#) (STEP, Version O)

[List all Documents](#)

#### Additional Product Images:

- [Typical Application](#)

#### Related Products:

- [Tooling](#)
- [Mating Products \(3\)](#)

### Product Features (Please use the Product Drawing for all design activity)

#### Product Type Features:

- [Product Type](#) = Connector
- Connector Type = Header
- Termination Method to PC Board = Through Hole - Solder
- PCB Mounting Orientation = Right Angle
- PCB Mount Alignment = Without
- [PCB Mount Retention](#) = With
- PCB Mount Retention Type = Kinked Leg(s)
- Shrouded = Yes - Partial
- Sealed = No
- UL File Number = E28476
- CSA File Number = LR 7189

#### Electrical Characteristics:

- Contact - Rated Current (A) = 4

#### Housing Features:

- Connector Style = Plug
- Centerline (mm [in]) = 2.00 [0.079]
- Housing Color = Natural
- UL Flammability Rating = UL 94V-0

#### Configuration Features:

- [Number of Positions](#) = 9
- [Number of Rows](#) = 1

#### Industry Standards:

- [RoHS/ELV Compliance](#) = RoHS compliant, ELV compliant
- [Lead Free Solder Processes](#) = Wave solder capable to 260°C, Wave solder capable to 240°C, Wave solder capable to 265°C
- RoHS/ELV Compliance History = Always was RoHS

<ul style="list-style-type: none"> <li>Operating Voltage Reference = AC/DC, AC, DC</li> <li>Operating Voltage (VAC) = 125</li> <li>Operating Voltage (VDC) = 125</li> </ul> <p><b>Termination Features:</b></p> <ul style="list-style-type: none"> <li>Wire/Cable Size (AWG) = 22 – 28</li> <li>Tail Orientation = In-line</li> <li>Tail Length (mm [in]) = 3.2 [0.126]</li> </ul> <p><b>Dimensions:</b></p> <ul style="list-style-type: none"> <li>Mating Post Length (mm [in]) = 4.50 [0.177]</li> <li>PCB Thickness, Recommended (mm [in]) = 0.80 – 1.60 [0.031 – 0.063]</li> <li>Length (X-Axis) (mm [in]) = 19.80 [0.7795]</li> <li>Width (Z-Axis) (mm [in]) = 4.00 [0.157]</li> <li>Profile Height (Y-Axis) (mm [in]) = 8.80 [0.346]</li> </ul> <p><b>Body Features:</b></p> <ul style="list-style-type: none"> <li>Header Type = Partially Shrouded</li> <li>Mating Retention = Without</li> </ul> <p><b>Contact Features:</b></p> <ul style="list-style-type: none"> <li>Contact Type = Pin</li> <li>Contact Plating, Mating Area, Material = Tin</li> <li>Contact Plating, Mating Area, Thickness (µm [µin]) = 1 [39.37]</li> <li>Contact Plating, Termination Area, Material = Tin</li> <li>Contact Plating, Termination Area, Thickness (µm [µin]) = 1 [40]</li> </ul>	<p>compliant</p> <ul style="list-style-type: none"> <li>Agency/Standard = CSA, UL</li> </ul> <p><b>Environmental:</b></p> <ul style="list-style-type: none"> <li>Operating Temperature (°C [°F]) = -40 – +105 [-40 – +221]</li> </ul> <p><b>Conditions for Usage:</b></p> <ul style="list-style-type: none"> <li>Applies To = Printed Circuit Board</li> </ul> <p><b>Operation/Application:</b></p> <ul style="list-style-type: none"> <li>Application Use = Wire-to-Board</li> <li>Contact Transmits (Typical Application) = Signal (Data)</li> <li>Pick and Place Cover = Without</li> </ul> <p><b>Packaging Features:</b></p> <ul style="list-style-type: none"> <li>Packaging Method = Bag, Box</li> </ul> <p><b>Other:</b></p> <ul style="list-style-type: none"> <li>Brand = AMP</li> </ul>
---	---

## Corporate Information

[About TE](#)  
[Investors](#)  
[News Room](#)  
[Supplier Portal](#)  
[Careers](#)  
[Terms & Conditions](#)  
[Privacy Policy](#)

## Quick Links

[Distributor Inventory](#)  
[Product Cross Reference](#)  
[Documents & Drawings](#)  
[Product Compliance Support Center](#)  
[Site Map](#)

## Customer Support

[Email or Chat With Us](#)  
[Find a Phone Number](#)  
[Knowledge Base](#)  
[Manage Your Account](#)

## Keep Me Informed



THIS DRAWING IS UNPUBLISHED.

RELEASED FOR PUBLICATION

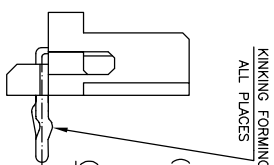
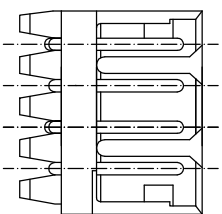
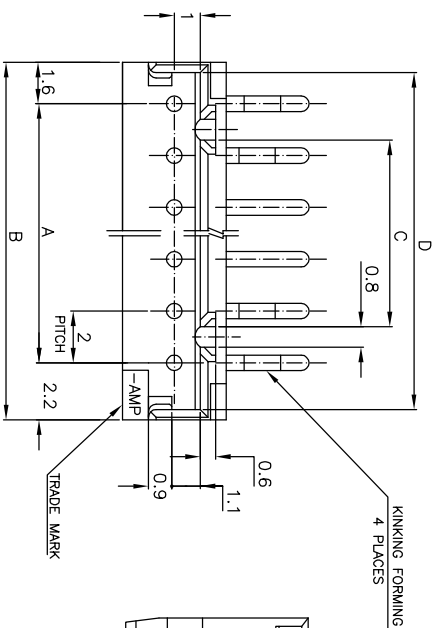
COPYRIGHT BY TYCO ELECTRONICS CORPORATION. ALL RIGHTS RESERVED.

LOC DIST

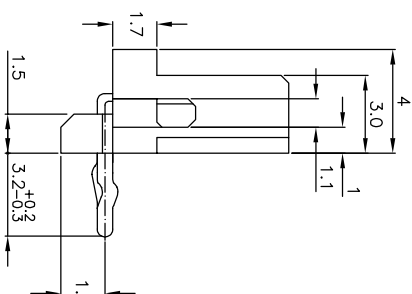
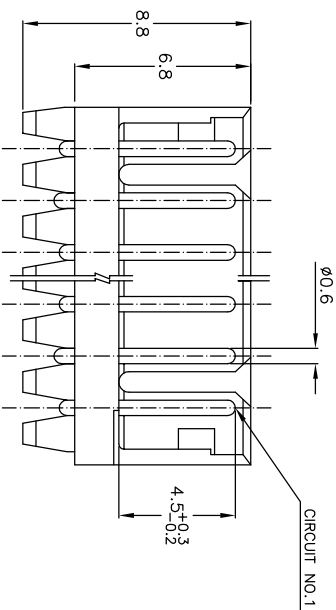
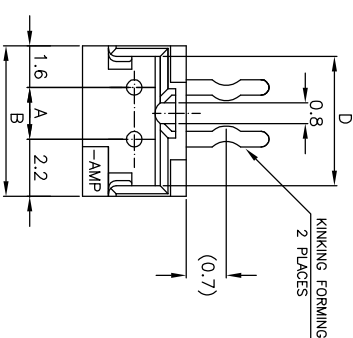
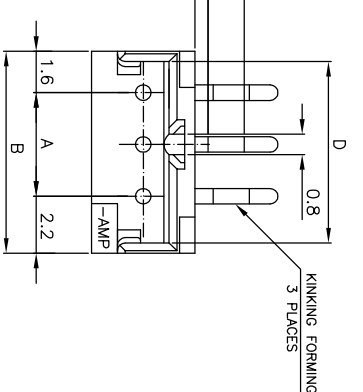
ES 00

REVISIONS

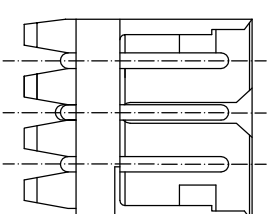
P	LTR	DESCRIPTION	DATE	DMN	APD
A	REVISED	ECR-07-000873	16JAN07	C.Z	S.Y



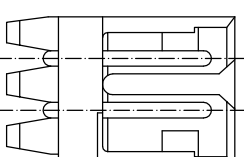
(SCALE 4-1)



5~15 Pos.



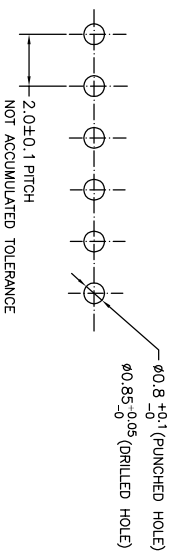
3 Pos.



2 Pos.

## NOTES:

1. MATERIAL: HOUSING - NYLON 66 (UL94V-0)  
POST - TIN BRASS
2. APPLICABLE RECEPTACLE P/N 173977
3. THIS PART HAS BEEN OBSOLETE.

RECOMMENDABLE PCB LAYOUT  
(PCB THK:0.8-1.6)TOLERANCES UNLESS  
OTHERWISE SPECIFIED:  
10±0.25  
30±0.25  
100±0.5  
ANGLE  
ES

THIS DRAWING IS A CONTROLLED DOCUMENT.

DIMENSIONS: MM

TOLERANCES UNLESS  
OTHERWISE SPECIFIED:  
0 PIC ±0.25  
1 PIC ±0.25  
2 PIC ±0.25  
3 PIC ±0.25  
4 PIC ±0.25  
ANGLES ±0.5

MATERIAL SEE NOTE

FINISH SEE NOTE

DMN	31JAN03	CHK	S.XU	APD	31JAN03	NAME	TYCO Electronics Corporation	SHANGHAI, CHINA
CHK	S.YAO	APD	T. SASAKI	PRODUCT SPEC	108-60016	APPLICATION SPEC	POST HEADER ASS'Y HORIZONTAL TYPE (AMP CT CONNECTOR 2mm PITCH)	
WEIGHT	—	SIZE	A3	QAGE CODE	00779	DRAWING NO	292253	RESTRICTED TO
CUSTOMER DRAWING	—	SCALE	5:1	SHEET	1	OF	1	REV
								A