



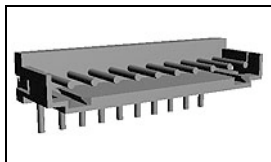
**Have a Question?**  
 Chat with a Product  
 Information Specialist

What can we help you find?

[Products](#) | 
 [Industries](#) | 
 [Resources](#) | 
 [About TE](#) | 
 [My Account](#) | 
 [Innovation](#) | 
 [Support Center](#)

## 292253-8 Product Details

[Share](#) | 
 [Print](#) | 
 [Email](#)



**292253-8**

TE Internal Number: 292253-8

Active

[View 3D PDF](#)

### 2mm AMP CT Connectors

Always EU RoHS/ELV Compliant (Statement of Compliance)

#### Product Highlights:

- Wire-to-Board
- Applies To Printed Circuit Board
- Connector
- Header
- Header Type = Partially Shrouded

[View all Features](#)

### Quick Links

- ▶ [Pricing & Availability](#)
- ▶ [Search for Tooling](#)
- ▶ [View Mating Products \(3\)](#)
- ▶ [Product Feature Selector](#)
- ▶ [Contact Us About This Product](#)

[Add to My Part List](#) | 
 [Request Sample](#) | 
 [Find Similar Products](#) | 
 [Buy Product](#)

Documentation & Additional Information	
<p><b>Product Drawings:</b></p> <ul style="list-style-type: none"> <li>• <a href="#">POST HEADER ASS'Y HORIZONTAL TYPE (AMP CT CONNECTOR ... (PDF, English)</a></li> </ul> <p><b>Catalog Pages/Data Sheets:</b></p> <ul style="list-style-type: none"> <li>• <a href="#">2.0MM_AMP_CT_CONNECTOR_SERIES_QUICK_REF_GUIDE (PDF, English)</a></li> </ul> <p><b>Product Specifications:</b></p> <ul style="list-style-type: none"> <li>• None Available</li> </ul> <p><b>Application Specifications:</b></p> <ul style="list-style-type: none"> <li>• None Available</li> </ul> <p><b>Instruction Sheets:</b></p> <ul style="list-style-type: none"> <li>• None Available</li> </ul> <p><b>CAD Files: (CAD Format &amp; Compression Information)</b></p> <ul style="list-style-type: none"> <li>• <a href="#">2D Drawing (DXF, Version 0)</a></li> <li>• <a href="#">3D Model (IGES, Version 0)</a></li> <li>• <a href="#">3D Model (STEP, Version 0)</a></li> </ul>	<p><b>Additional Product Images:</b></p> <ul style="list-style-type: none"> <li>• <a href="#">Typical Application</a></li> </ul> <p><b>Related Products:</b></p> <ul style="list-style-type: none"> <li>• <a href="#">Tooling</a></li> <li>• <a href="#">Mating Products (3)</a></li> </ul>

[List all Documents](#)

Product Features (Please use the Product Drawing for all design activity)	
<p><b>Product Type Features:</b></p> <ul style="list-style-type: none"> <li>• <a href="#">Product Type</a> = Connector</li> <li>• Connector Type = Header</li> <li>• PCB Mounting Orientation = Right Angle</li> <li>• PCB Mount Alignment = Without</li> <li>• <a href="#">PCB Mount Retention</a> = With</li> <li>• PCB Mount Retention Type = Kinked Leg(s)</li> <li>• Sealed = No</li> <li>• CSA File Number = LR 7189</li> </ul> <p><b>Electrical Characteristics:</b></p> <ul style="list-style-type: none"> <li>• Contact - Rated Current (A) = 4</li> <li>• Operating Voltage Reference = AC/DC, AC, DC</li> <li>• Operating Voltage (VAC) = 125</li> <li>• Operating Voltage (VDC) = 125</li> </ul> <p><b>Termination Features:</b></p> <ul style="list-style-type: none"> <li>• Wire/Cable Size (AWG) = 22 - 28</li> <li>• Termination Method to PC Board = Through Hole - Solder</li> </ul> <p><b>Dimensions:</b></p> <ul style="list-style-type: none"> <li>• Mating Post Length (mm [in]) = 4.50 [0.177]</li> <li>• PCB Thickness, Recommended (mm [in]) = 0.80 - 1.60 [0.031 - 0.063]</li> <li>• Tail Length (mm [in]) = 3.2 [0.126]</li> <li>• Length (X-Axis) (mm [in]) = 17.80 [0.7008]</li> <li>• Width (Z-Axis) (mm [in]) = 4.00 [0.157]</li> </ul>	<p><b>Housing Features:</b></p> <ul style="list-style-type: none"> <li>• Connector Style = Plug</li> <li>• Centerline (mm [in]) = 2.00 [0.079]</li> <li>• Housing Color = Natural</li> </ul> <p><b>Configuration Features:</b></p> <ul style="list-style-type: none"> <li>• <a href="#">Number of Positions</a> = 8</li> <li>• <a href="#">Number of Rows</a> = 1</li> <li>• Tail Orientation = In-line</li> <li>• Shrouded = Yes - Partial</li> </ul> <p><b>Industry Standards:</b></p> <ul style="list-style-type: none"> <li>• <a href="#">RoHS/ELV Compliance</a> = RoHS compliant, ELV compliant</li> <li>• <a href="#">Lead Free Solder Processes</a> = Wave solder capable to 260°C, Wave solder capable to 240°C, Wave solder capable to 265°C</li> <li>• RoHS/ELV Compliance History = Always was RoHS compliant</li> <li>• UL Flammability Rating = UL 94V-0</li> <li>• Agency/Standard = CSA, UL</li> <li>• UL File Number = E28476</li> </ul> <p><b>Environmental:</b></p> <ul style="list-style-type: none"> <li>• Operating Temperature (°C [°F]) = -40 - +105 [-40 - +221]</li> </ul> <p><b>Conditions for Usage:</b></p> <ul style="list-style-type: none"> <li>• Applies To = Printed Circuit Board</li> </ul> <p><b>Operation/Application:</b></p> <ul style="list-style-type: none"> <li>• Application Use = Wire-to-Board</li> </ul>

<ul style="list-style-type: none"> <li>• Profile Height (Y-Axis) (mm [in]) = 8.80 [0.346]</li> </ul> <p><b>Body Features:</b></p> <ul style="list-style-type: none"> <li>• Header Type = Partially Shrouded</li> <li>• Mating Retention = Without</li> </ul> <p><b>Contact Features:</b></p> <ul style="list-style-type: none"> <li>• Contact Type = Pin</li> <li>• Contact Plating, Mating Area, Material = Tin</li> <li>• Contact Plating, Mating Area, Thickness (<math>\mu\text{m}</math> [<math>\mu\text{in}</math>]) = 1 [39.37]</li> <li>• Contact Plating, Termination Area, Material = Tin</li> <li>• Contact Plating, Termination Area, Thickness (<math>\mu\text{m}</math> [<math>\mu\text{in}</math>]) = 1 [39.37]</li> </ul>	<ul style="list-style-type: none"> <li>• Contact Transmits (Typical Application) = Signal (Data)</li> <li>• Pick and Place Cover = Without</li> </ul> <p><b>Packaging Features:</b></p> <ul style="list-style-type: none"> <li>• Packaging Method = Bag, Box</li> </ul> <p><b>Other:</b></p> <ul style="list-style-type: none"> <li>• Brand = AMP</li> </ul>
---	--

**Corporate Information**

- [About TE](#)
- [Investors](#)
- [News Room](#)
- [Supplier Portal](#)
- [Careers](#)
- [Terms & Conditions](#)
- [Privacy Policy](#)
- [AODA Accessibility Policy](#)
- [AODA Multi-Year Accessibility Plan](#)

**Quick Links**

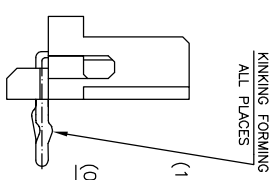
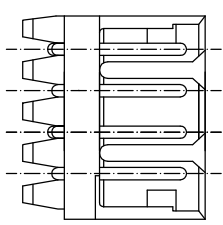
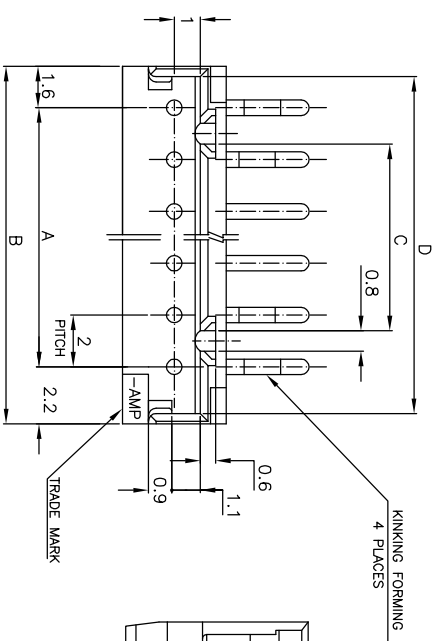
- [Distributor Inventory](#)
- [Product Cross Reference](#)
- [Documents & Drawings](#)
- [Product Compliance Support Center](#)
- [Site Map](#)

**Customer Support**

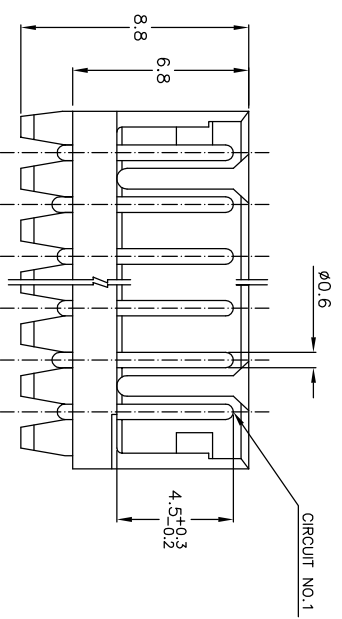
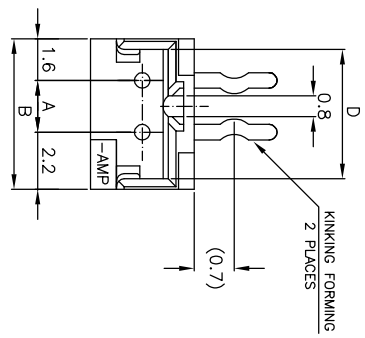
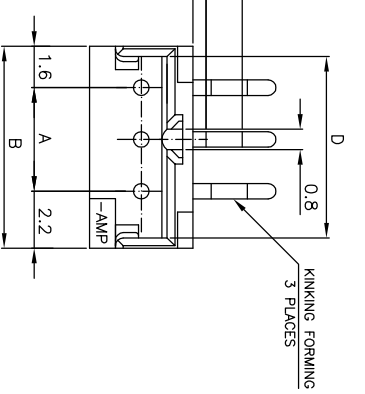
- [Email or Chat With Us](#)
- [Find a Phone Number](#)
- [Knowledge Base](#)
- [Manage Your Account](#)

**Keep Me Informed**

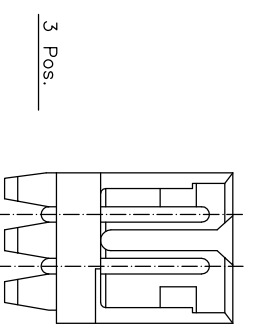
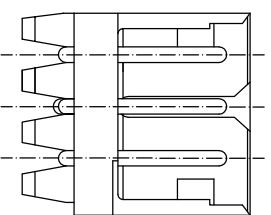
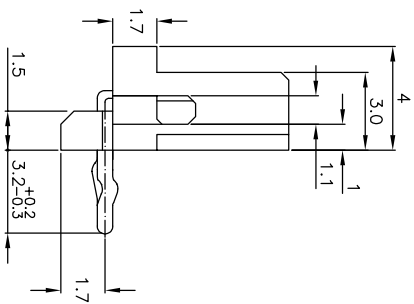




4 Pos.  
(SCALE 4-1)

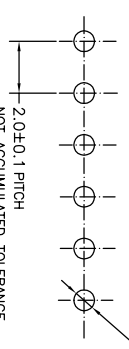


5~15 Pos.



- NOTES:
- MATERIAL: NYLON 66 (UL94V-0)  
POST - TIN BRASS
  - APPLICABLE RECEPTACLE P/N 173977
  - THIS PART HAS BEEN OBSOLETE.

7-292253-4	5-292253-5	3-292253-6	1-292253-5	15	28	31.8	25.2	31.0
-4	5	3	1	14	26	29.8	23.2	29.0
-3	5	3	3	13	24	27.8	21.2	27.0
-2	5	2	3	12	22	25.8	19.2	25.0
-1	5	1	3	11	20	23.8	17.2	23.0
0	5	0	3	10	18	21.8	15.2	21.0
-9	4	2	2	9	16	19.8	13.2	19.0
-8	4	2	2	8	14	17.8	11.2	17.0
-7	4	2	2	7	12	15.8	9.2	15.0
-6	4	2	2	6	10	13.8	7.2	13.0
-5	4	2	2	5	8	11.8	5.2	11.0
-4	4	2	2	4	6	9.8	3.2	9.0
-3	4	2	2	3	4	7.8	1.2	7.0
6-292253-2	4-292253-2	2-292253-2	292253-2	2	2	5.8	—	5.0



Ø0.8±0.1 (PUNCHED HOLE)  
Ø0.85<sup>+0</sup><sub>-0.05</sub> (DRILLED HOLE)

RECOMMENDABLE PCB LAYOUT  
(PCB THK:0.8-1.6)

TOLERANCES UNLESS OTHERWISE SPECIFIED:

10 >	*	±0.2
30 >	*	±0.25
100 >	*	±0.3
ANGLE	>30	±3

THIS DRAWING IS A CONTROLLED DOCUMENT.

DIMENSIONS: MM	TOLERANCES UNLESS OTHERWISE SPECIFIED:	FINISH	WEIGHT
0 PIC	±	0 PIC	—
1 PIC	±	1 PIC	—
2 PIC	±	2 PIC	—
3 PIC	±	3 PIC	—
4 PIC	±	4 PIC	—

DMN: S.XU  
CHK: S.YAO  
APP'D: T.SASAKI  
PRODUCT SPEC: 108-60016  
APPLICATION SPEC: —  
WEIGHT: —

POST HEADER ASS'Y HORIZONTAL TYPE  
(AMP CT CONNECTOR 2mm PITCH)

TYCO Electronics Corporation  
SHANGHAI, CHINA

SIZE: A3  
PAGE CODE: 00779  
DRAWING NO: 292253  
SCALE: 5:1  
SHEET: 1 OF 1  
REV: A