



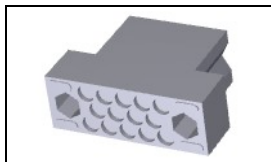
Have a Question?
Chat with a Product Information Specialist

What can we help you find?

[Products](#) [Industries](#) [Resources](#) [About TE](#) [My Account](#) [Innovation](#) [Support Center](#)

201355-1 Product Details

[Share](#) [Print](#) [Email](#)



201355-1

TE Internal Number: 201355-1

Active

[View 3D PDF](#)

M Series Connectors

Always EU RoHS/ELV Compliant (Statement of Compliance)

Product Highlights:

- Product Series = M Series
- Connector
- Cable-to-Cable / Cable-to-Panel
- Applies To Panel, Applies To Wire/Cable
- Housing

[View all Features](#)

Quick Links

- ▶ [Pricing & Availability](#)
- ▶ [Search for Tooling](#)
- ▶ [Product Feature Selector](#)
- ▶ [Contact Us About This Product](#)

[Add to My Part List](#) [Request Sample](#) [Find Similar Products](#) [Buy Product](#)

Documentation & Additional Information	
<p>Product Drawings:</p> <ul style="list-style-type: none"> • BLOCK, MALE, 14 POSITION, MINIATURE RECTANGULAR, M S... (PDF, English) <p>Catalog Pages/Data Sheets:</p> <ul style="list-style-type: none"> • M_SERIES_PIN_AND_SOCKET_CONNECTORS (PDF, English) <p>Product Specifications:</p> <ul style="list-style-type: none"> • None Available <p>Application Specifications:</p> <ul style="list-style-type: none"> • None Available <p>Instruction Sheets:</p> <ul style="list-style-type: none"> • AMP 14 Position Series "M" -SM & "M" -DM Connectors (PDF, English) • AMP* 6, 14, 20 AND 41 POSITION SERIES "M" CONNECTORS (PDF, English) <p>CAD Files: (CAD Format & Compression Information)</p> <ul style="list-style-type: none"> • 2D Drawing (DXF, Version P) • 3D Model (IGES, Version P) • 3D Model (STEP, Version P) 	<p>Additional Information:</p> <ul style="list-style-type: none"> • Product Line Information <p>Related Products:</p> <ul style="list-style-type: none"> • Tooling

[List all Documents](#)

Product Features (Please use the Product Drawing for all design activity)	
<p>Product Type Features:</p> <ul style="list-style-type: none"> • Product Series = M Series • Product Type = Connector • Connector Type = Housing • Strain Relief = Without • Sealed = No <p>Mechanical Attachment:</p> <ul style="list-style-type: none"> • Panel Mount Retention = With • Panel Mount Retention Type = Screw Mount <p>Dimensions:</p> <ul style="list-style-type: none"> • Length (X-Axis) (mm [in]) = 23.24 [0.915] • Width (Z-Axis) (mm [in]) = 11.18 [0.440] • Profile Height (Y-Axis) (mm [in]) = 31.75 [1.250] <p>Body Features:</p> <ul style="list-style-type: none"> • Mating Retention = Without <p>Contact Features:</p> <ul style="list-style-type: none"> • Contact Type = Pin <p>Housing Features:</p> <ul style="list-style-type: none"> • Connector Style = Plug • Centerline (mm [in]) = 3.30 [0.129] • Housing Material = Phenolic - GF • Housing Color = Black 	<p>Configuration Features:</p> <ul style="list-style-type: none"> • Number of Positions = 14 <p>Industry Standards:</p> <ul style="list-style-type: none"> • RoHS/ELV Compliance = RoHS compliant, ELV compliant • Lead Free Solder Processes = Wave solder capable to 240°C, Wave solder capable to 260°C, Wave solder capable to 265°C • RoHS/ELV Compliance History = Always was RoHS compliant <p>Environmental:</p> <ul style="list-style-type: none"> • Operating Temperature (°C [°F]) = -55 - +150 [-67 - +302] <p>Conditions for Usage:</p> <ul style="list-style-type: none"> • Applies To = Panel, Wire/Cable • For Use With = Female Block <p>Operation/Application:</p> <ul style="list-style-type: none"> • Application Use = Cable-to-Cable / Cable-to-Panel <p>Packaging Features:</p> <ul style="list-style-type: none"> • Packaging Method = Box/Carton • Packaging Quantity = 350 <p>Other:</p> <ul style="list-style-type: none"> • Brand = AMP • Comment = Housing accepts type II, type III+ and Subminiature Coaxicon contacts.; Housing cavity identification are mirror image.; Pins and/or sockets may be used in any housing

- Mating Alignment = Without
- UL Flammability Rating = UL 94V-0

housing.

Corporate Information

- [About TE](#)
- [Investors](#)
- [News Room](#)
- [Supplier Portal](#)
- [Careers](#)
- [Terms & Conditions](#)
- [Privacy Policy](#)

Quick Links

- [Distributor Inventory](#)
- [Product Cross Reference](#)
- [Documents & Drawings](#)
- [Product Compliance Support Center](#)
- [Site Map](#)

Customer Support

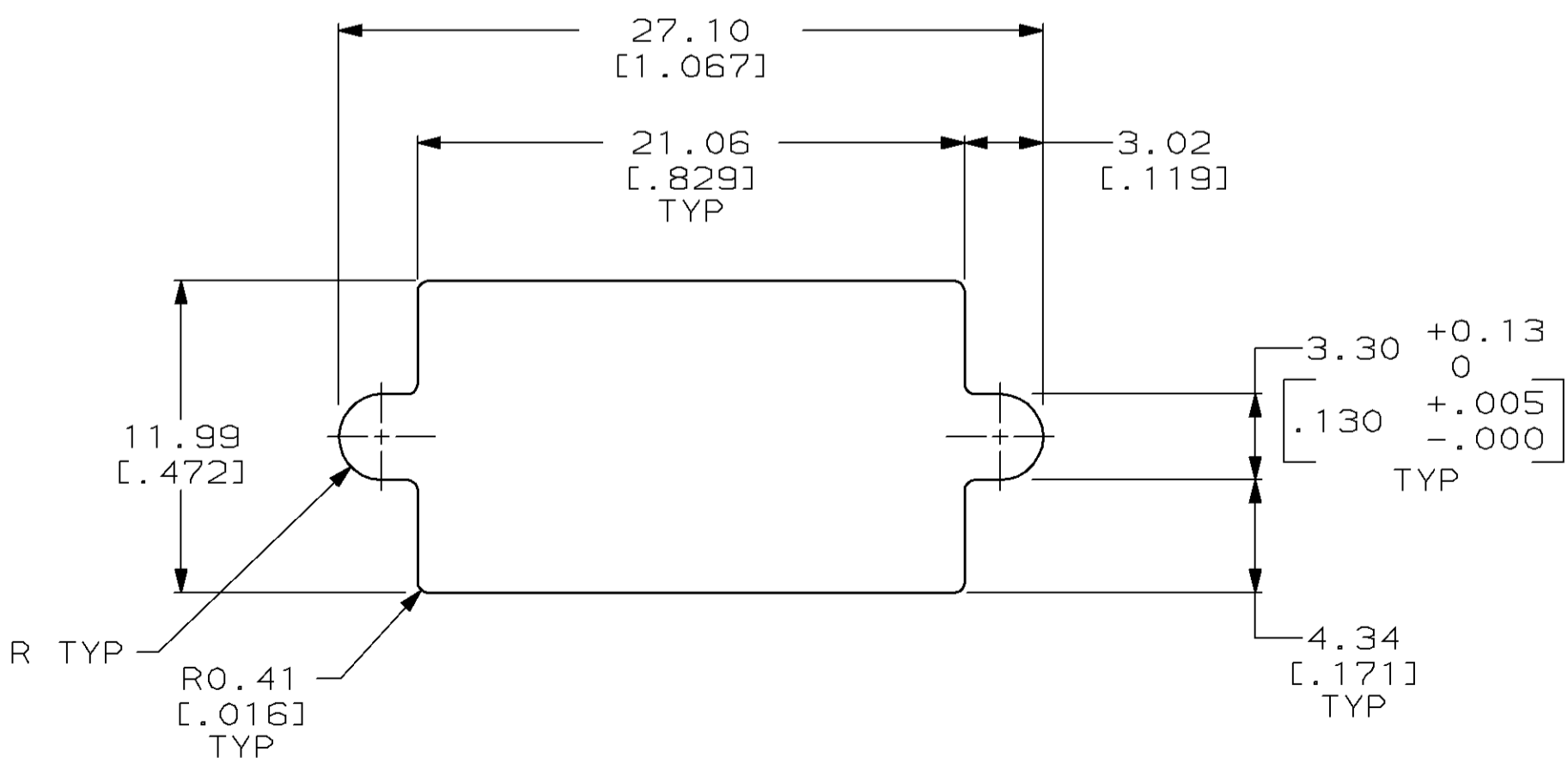
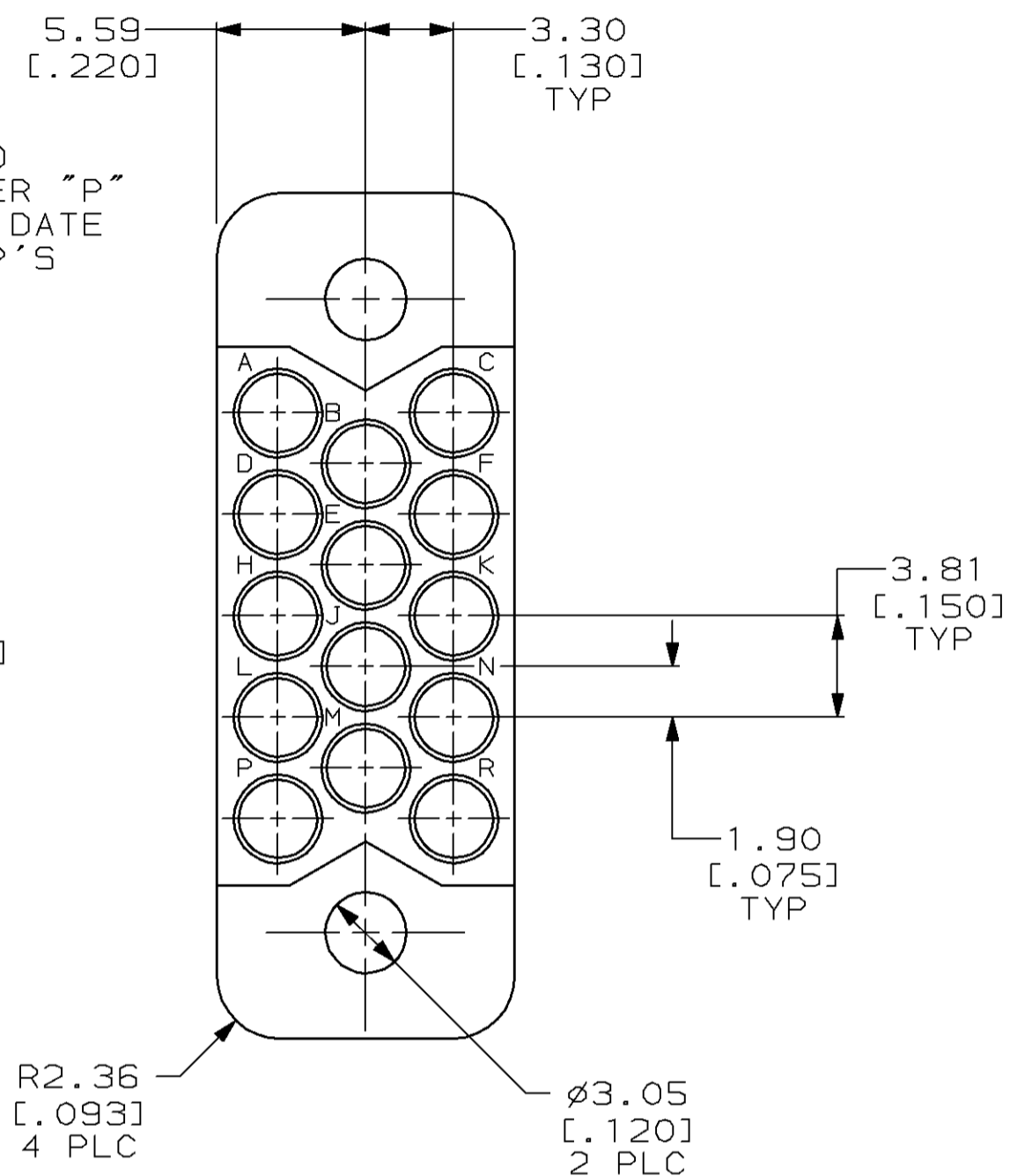
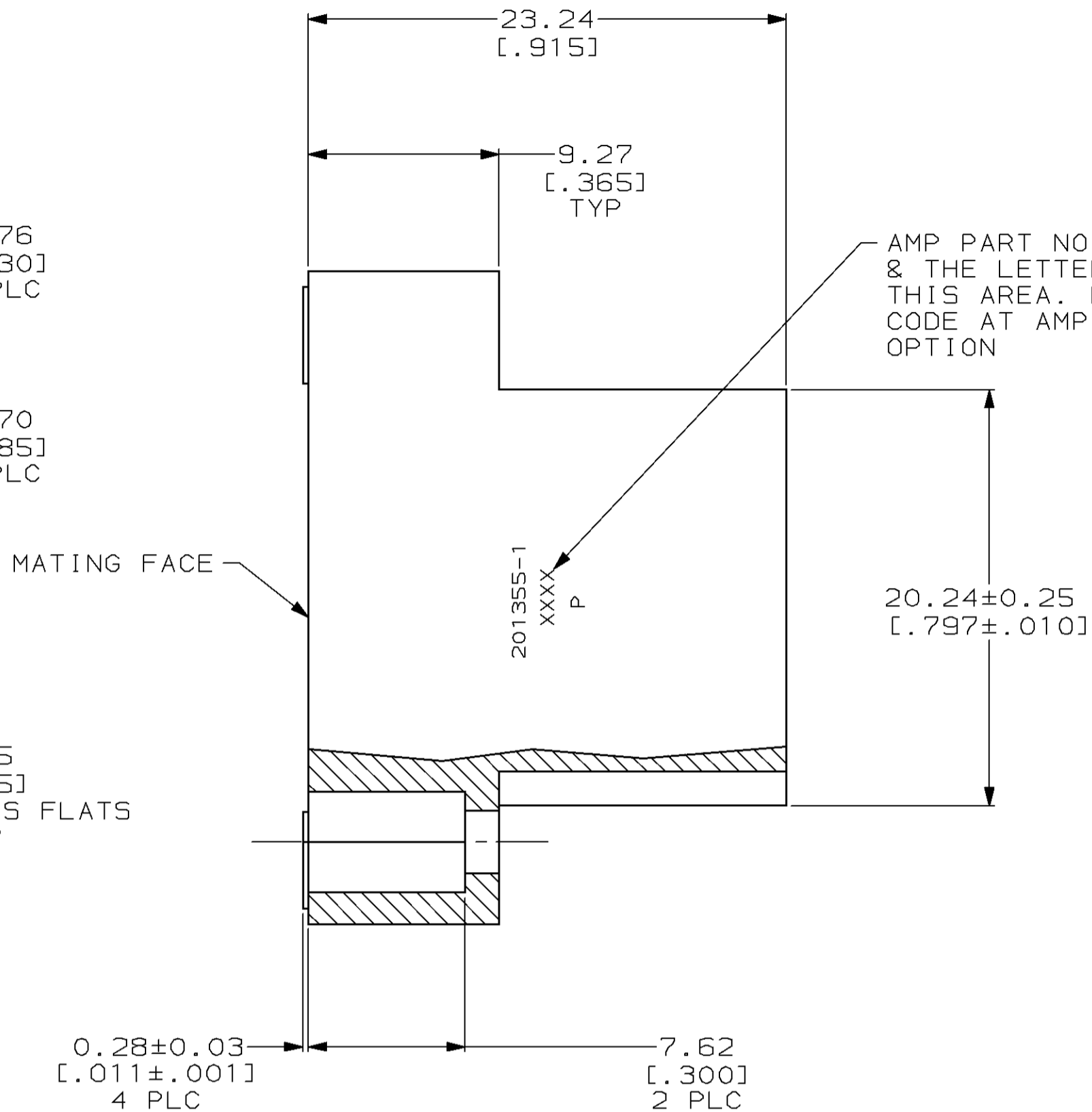
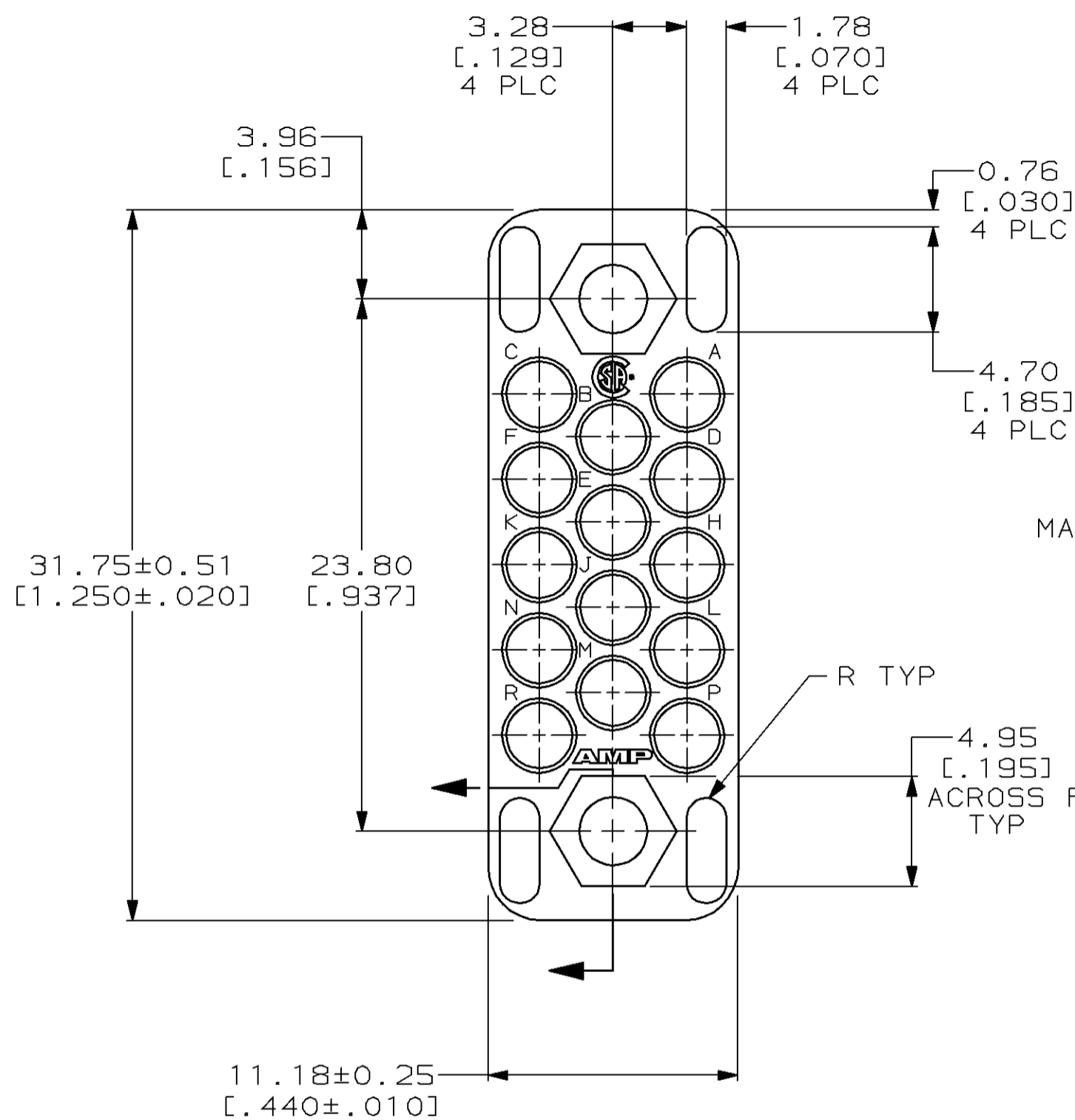
- [Email or Chat With Us](#)
- [Find a Phone Number](#)
- [Knowledge Base](#)
- [Manage Your Account](#)

Keep Me Informed



THIS DRAWING IS UNPUBLISHED. RELEASED FOR PUBLICATION
 BY AMP INCORPORATED. ALL RIGHTS RESERVED.

Loc		DIST		REVISIONS			
P	LTR	DESCRIPTION	DATE	DWN	APVD		
		REDRAWN W/O CHANGE PER EC	15 MAR 96	-	-		
	N	0020-1345-95					
	P	REV PER EC 0320-82-97	14 AUG 97	BC	GS		



- 1. PHENOLIC PER MIL-M-14, TYPE CFG, BLACK.
- 2. MATES WITH BLOCK 201298 & ACCOMODATES TYPE II, TYPE III+ OR TYPE VI #16 PIN OR SOCKET CONTACTS.

201355-1
 PART NUMBER

THIS DRAWING IS A CONTROLLED DOCUMENT.		DWN C. OBERMAN 15 MAR 96	AMP Incorporated Harrisburg, PA 17105-3608
DIMENSIONS: mm [INCHES]		CHK R. STONE 19 MAR 96	
TOLERANCES UNLESS OTHERWISE SPECIFIED:		APVD G. STEINHAUER 11 APR 96	NAME BLOCK, MALE, 14 POSITION, MINIATURE RECTANGULAR, M SERIES
0 PLC ± 1 PLC ± 2 PLC ±0.13 [.005] 3 PLC ± 4 PLC ±		PRODUCT SPEC -	SIZE A2
MATERIAL △		APPLICATION SPEC -	CAGE CODE 00779
FINISH -		WEIGHT -	DRAWING NO C-201355
		CUSTOMER DRAWING	SCALE 4:1
			SHEET 1 OF 1
			REV P