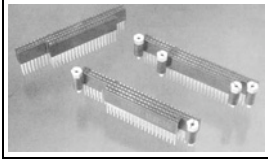


[My Cart](#) | [My Part Lists](#) | [Sign In/Register](#)[English \(Change\)](#)

Have a Question?  
Chat with a Product  
Information Specialist

What can we help you find?

[Products](#) [Industries](#) [Resources](#) [About TE](#) [My Account](#) [Innovation](#) [Support Center](#)**1375793-1 Product Details**[Share](#)[Print](#)[Email](#)**1375793-1**

TE Internal Number: 1375793-1



Active

[View 3D PDF](#)**PC/104 and PC/104 Plus**

Always EU RoHS/ELV Compliant (Statement of Compliance)

**Product Highlights:**

- Connector
- 104 Positions
- 102 Loaded Positions
- Contact Configuration = Stackthrough
- 2.54 mm Centerline

[View all Features](#)**Quick Links**

- ▶ [Pricing & Availability](#)
- ▶ [Search for Tooling](#)
- ▶ [Product Feature Selector](#)
- ▶ [Contact Us About This Product](#)

[Add to My Part List](#)[Request Sample](#)[Find Similar Products](#)[Buy Product](#)**Documentation & Additional Information****Product Drawings:**

- [ASSEMBLY, PC/104, STACKTHROUGH CONTACTS, 2 STANDOFFS...](#) (PDF, English)

**Catalog Pages/Data Sheets:**

- [AMPMODU\\_INTERCONNECTION\\_SYSTEM\\_SECTION1AND2](#) (PDF, English)

**Product Specifications:**

- [PC/104 and PC/104-Plus Connector Systems](#) (PDF, English)

**Application Specifications:**

- [PC/104 and PC/104-Plus Connectors](#) (PDF, English)

**Instruction Sheets:**

- None Available

**CAD Files:** (CAD Format & Compression Information)

- [2D Drawing](#) (DXF, Version F)
- [3D Model](#) (IGES, Version F)
- [3D Model](#) (STEP, Version F)

[List all Documents](#)**Additional Information:**

- [Product Line Information](#)

**Related Products:**

- [Tooling](#)

**Product Features (Please use the Product Drawing for all design activity)****Product Type Features:**

- [Product Type](#) = Connector
- Keyed = Yes
- [PCB Mount Style](#) = Through Hole Press Fit
- [PCB Mount Retention Type](#) = Action/Compliant Tail
- [Board Standoff](#) = With
- Gender = Receptacle

**Electrical Characteristics:**

- Signal Contact Current (A) = 3
- Insulation Resistance (MΩ) = 1,000
- Dielectric Withstanding Voltage (V) = 500

**Termination Features:**

- [Termination Post Length](#) (mm [in]) = 12.27 [0.483]

**Body Features:**

- Screw Material = Steel
- Screw Plating = Zinc Chromate

**Contact Features:**

- [Contact Configuration](#) = Stackthrough
- Contact Base Material = Phosphor Bronze
- Contact Plating, Mating Area, Material = Gold

**Housing Features:**

- [Centerline](#) (mm [in]) = 2.54 [0.100]
- Housing Material = Nylon - GF
- Housing Color = Black

**Configuration Features:**

- [Number of Positions](#) = 104
- [Number of Loaded Positions](#) = 102
- Number of Standoffs = 2

**Industry Standards:**

- [RoHS/ELV Compliance](#) = RoHS compliant, ELV compliant
- [Lead Free Solder Processes](#) = Not relevant for lead free process
- RoHS/ELV Compliance History = Always was RoHS compliant
- UL Flammability Rating = UL 94V-0

**Identification Marking:**

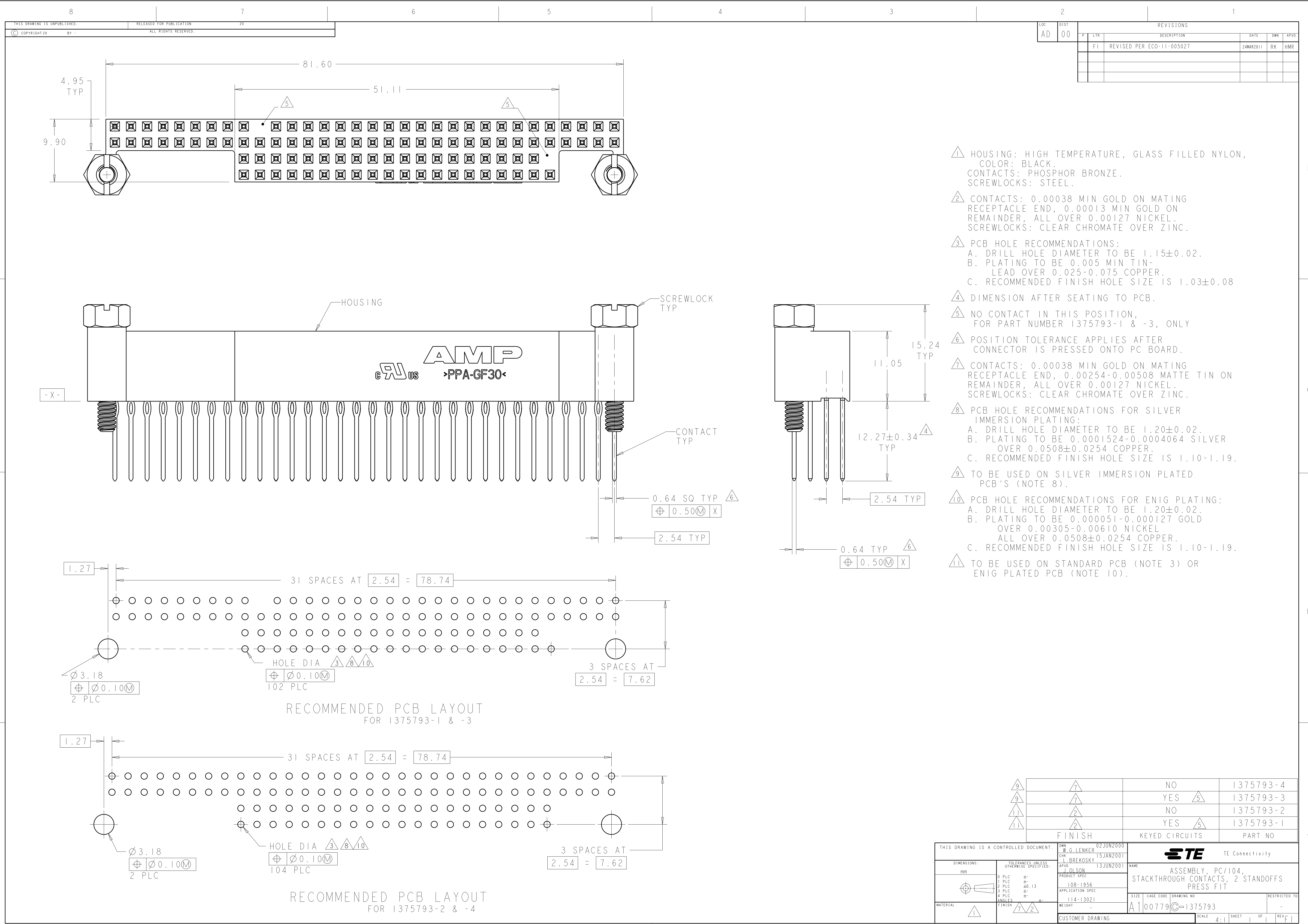
- [Keyed Position](#) = B-10, C-19

**Conditions for Usage:**

- Temperature Range (°C) = -55 - +105

**Other:**

- Brand = AMP
- Comment = See Specific Info Link for information on a PC/104 Extraction Tool.; "Flat-rock" insertable



LOC		DIST		REVISONS			
AD	00	F	LYR	DESCRIPTION	DATE	OWN	APVD
			F1	REVISED PER ECO-11-005027	24MAR2011	RK	HMR

- 1 HOUSING: HIGH TEMPERATURE, GLASS FILLED NYLON, COLOR: BLACK.  
CONTACTS: PHOSPHOR BRONZE.  
SCREWLOCKS: STEEL.
- 2 CONTACTS: 0.00038 MIN GOLD ON MATING RECEPTACLE END, 0.00013 MIN GOLD ON REMAINDER, ALL OVER 0.00127 NICKEL.  
SCREWLOCKS: CLEAR CHROMATE OVER ZINC.
- 3 PCB HOLE RECOMMENDATIONS:  
A. DRILL HOLE DIAMETER TO BE 1.15±0.02.  
B. PLATING TO BE 0.005 MIN TIN-LEAD OVER 0.025-0.075 COPPER.  
C. RECOMMENDED FINISH HOLE SIZE IS 1.03±0.08
- 4 DIMENSION AFTER SEATING TO PCB.
- 5 NO CONTACT IN THIS POSITION, FOR PART NUMBER 1375793-1 & -3, ONLY
- 6 POSITION TOLERANCE APPLIES AFTER CONNECTOR IS PRESSED ONTO PC BOARD.
- 7 CONTACTS: 0.00038 MIN GOLD ON MATING RECEPTACLE END, 0.00254-0.00508 MATTE TIN ON REMAINDER, ALL OVER 0.00127 NICKEL.  
SCREWLOCKS: CLEAR CHROMATE OVER ZINC.
- 8 PCB HOLE RECOMMENDATIONS FOR SILVER IMMERSION PLATING:  
A. DRILL HOLE DIAMETER TO BE 1.20±0.02.  
B. PLATING TO BE 0.0001524-0.0004064 SILVER OVER 0.0508±0.0254 COPPER.  
C. RECOMMENDED FINISH HOLE SIZE IS 1.10-1.19.
- 9 TO BE USED ON SILVER IMMERSION PLATED PCB'S (NOTE 8).
- 10 PCB HOLE RECOMMENDATIONS FOR ENIG PLATING:  
A. DRILL HOLE DIAMETER TO BE 1.20±0.02.  
B. PLATING TO BE 0.000051-0.000127 GOLD OVER 0.00305-0.00610 NICKEL ALL OVER 0.0508±0.0254 COPPER.  
C. RECOMMENDED FINISH HOLE SIZE IS 1.10-1.19.
- 11 TO BE USED ON STANDARD PCB (NOTE 3) OR ENIG PLATED PCB (NOTE 10).

RECOMMENDED PCB LAYOUT  
FOR 1375793-1 & -3

RECOMMENDED PCB LAYOUT  
FOR 1375793-2 & -4

9	7	NO	1375793-4
9	7	YES 5	1375793-3
11	2	NO	1375793-2
11	2	YES 5	1375793-1
FINISH		KEYED CIRCUITS	PART NO

THIS DRAWING IS A CONTROLLED DOCUMENT.		OWN W.G. LENKER CHK L. BREKOSKY APVD J. OLSON	02JUN2000 15JAN2001 13JUN2001	NAME ASSEMBLY, PC/104. STACKTHROUGH CONTACTS, 2 STANDOFFS PRESS FIT	
DIMENSIONS: mm		TOLERANCES UNLESS OTHERWISE SPECIFIED:		PRODUCT SPEC 108-1956 APPLICATION SPEC 114-13021	
MATERIAL		FINISH		SIZE A100779	
		CUSTOMER DRAWING		SCALE 4:1	
				SHEET 1 OF 1	
				REV F1	