



Connectivity Solutions

Wireless

CATV

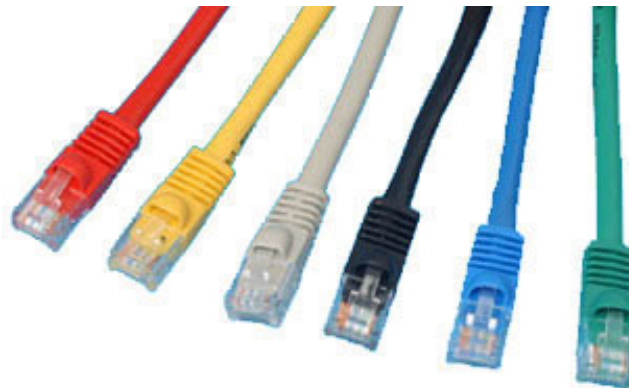
Audio & Video

Networking &
Structured Wiring

Military & Aerospace

Test & Measurement

Product Detail



| | |
|------------------------|--|
| Product Line: | Aim |
| Part Number: | 73-7796-50 |
| Description: | PATCH CABLE,CAT5E,350MHZ,UL,MOLDED,WHITE,50FT |
| Product Family: | VOICE & DATA LAN SOLUTIONS_DATA CABLES_CAT5E - MOLDED/BOOTED |
| Bandwidth: | 10-155 Mbps |
| Cable Type: | 24 AWG. 350 MHz UNSHIELDED TWISTED PAIR |
| Color / Finish: | White |
| Connector A: | RJ45 |
| Connector B: | RJ45 |
| Contact Finish: | 50 Micron Gold |
| Genders: | Male/Male |
| Length: | 50 |
| Size: | Feet |
| Standard Pack: | 1 |
| Wiring: | EIA/TIA 568B |
| RoHS Compliant: | Yes |

20070523-1523