

These premium quality UL listed modular plugs are manufactured in the USA to meet or exceed the high data transmission standards required by current voice and data communication standards. They are designed to work with most standard crimp tools, as well as the complete line of **Emerson** crimp tools as found on page 52. These connectors are available in 4, 6, 8 and 10 pin versions, and the gold contacts consist of 50 micro-inch gold plating, and are built to work with both solid and stranded conductor cables.

Modular Plugs

Features:

- 50 micro-inch Gold-Plated contacts
- Easy Installation with most Crimp Tools
- UL Listed & Certified
- Made in U.S.A.

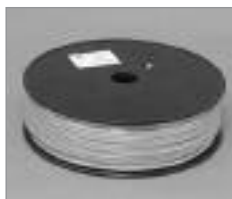


| Part No. | Figure | RJ-11 (6p4c) | RJ-12 (6p6c) | RJ-45 (8p8c) | CAT5 | CAT5e | CAT6 | Straight | Offset | Load Bar | Solid | Stranded | Flat | Round | Unshielded | |
|-----------------------------------------------------|--------|------------------------------|--------------|----------------|------|-------|------|----------|--------|----------|-------|----------|------|-------|------------|--|
| 32-5964UL | A | Handset Plug RJ-22 (4p4c) | | | ✓ | | | ✓ | | | ✓ | ✓ | ✓ | ✓ | ✓ | |
| 32-5954UL | B | ✓ | | | ✓ | | | ✓ | | | ✓ | ✓ | ✓ | | ✓ | |
| 32-5994UL | B | ✓ | | | ✓ | | | ✓ | | | ✓ | ✓ | | ✓ | ✓ | |
| 32-5956UL | C | | ✓ | | ✓ | | | ✓ | | | ✓ | ✓ | ✓ | | ✓ | |
| 32-5996UL | C | | ✓ | | ✓ | | | ✓ | | | ✓ | ✓ | | ✓ | ✓ | |
| 32-2098UL | F | | | ✓ | ✓ | | | ✓ | | | ✓ | ✓ | | ✓ | Shielded | |
| 32-5958UL | D | | | ✓ | ✓ | | | ✓ | | | ✓ | ✓ | ✓ | | ✓ | |
| 32-5998UL | D | | | ✓ | ✓ | | | ✓ | | | ✓ | ✓ | | ✓ | ✓ | |
| 32-5998EUL | D | | | ✓ | | ✓ | | | ✓ | | ✓ | ✓ | | ✓ | ✓ | |
| 32-2198UL | D | | | ✓ | | ✓ | | ✓ | ✓ | ✓ | ✓ | ✓ | | ✓ | ✓ | |
| 32-6198UL | D | | | ✓ | | | ✓ | | ✓ | ✓ | ✓ | ✓ | | ✓ | ✓ | |
| (Works with Belden 1872A and Bonded Cat6 7881 Wire) | | | | | | | | | | | | | | | | |
| 32-5910UL | E | | | RJ-45 (10p10p) | ✓ | | | ✓ | | | ✓ | ✓ | | ✓ | ✓ | |



Cat5E & Cat6 Stranded Patch Cable
4 pair, 24 AWG Unshielded, EIA/TIA 568, 1,000 ft. "Reel in Box" with cable length markings.

| Cat5E (350 MHz) | Color | Cat6 (500 MHz) |
|-----------------|--------|----------------|
| 65-9580 | Gray | 65-9680 |
| 65-9581 | Black | 65-9681 |
| 65-9582 | Blue | 65-9682 |
| 65-9583 | Green | 65-9683 |
| 65-9584 | Red | 65-9684 |
| 65-9585 | Yellow | 65-9685 |
| 65-9586 | White | 65-9686 |
| 65-9587 | Orange | 65-9687 |
| 65-9588 | Pink | 65-9688 |
| 65-9589 | Purple | 65-9689 |



Flat Silver Satin Telephone and Computer Equipment Wire
28 AWG, Stranded Wire, Spool, Gray

| Part No. | Cond. | Length | Listing |
|-----------|-------|------------|-----------|
| 65-TF254C | 4 | 500 feet | non-UL |
| 65-TF224M | 4 | 1,000 feet | non-UL |
| 65-TF256C | 6 | 500 feet | non-UL |
| 65-TF226M | 6 | 1,000 feet | non-UL |
| 65-TF258C | 8 | 500 feet | non-UL |
| 65-TF228M | 8 | 1,000 feet | non-UL |
| 65-TF264M | 4 | 1,000 feet | UL Listed |
| 65-TF266M | 6 | 1,000 feet | UL Listed |
| 65-TF268M | 8 | 1,000 feet | UL Listed |



Colored Snagless Boots
for RJ-45 8 Conductor Shielded and Unshielded Modular Plugs.

| Color | Round |
|--------|-----------|
| Gray | 30-2900GY |
| Black | 30-2900BK |
| Blue | 30-2900BU |
| Green | 30-2900GN |
| Red | 30-2900RE |
| Yellow | 30-2900YE |
| White | 30-2900WH |