

DUAL WIRE FERRULES

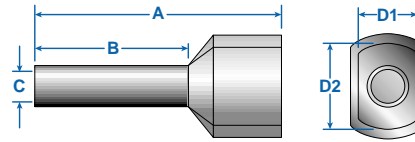
Insulated

Dual Wire Ferrules have larger diameters and special shaped sleeves that accept two conductors of the same or different size. They provide an efficient connection of multiple wires in the same terminal clamp or simplify wire jumpering between terminal clamps. They are color coded with the same convention as the insulated DIN standard ferrules.

To ensure efficient ferrule crimping always select the smallest ferrule diameter that fits the wire and use only professional crimping tools. (Please refer to the ordering pages and the Crimper Selector Guide on pages 58-61.)

- Sleeve: polypropylene
- Tube: tin plated copper

DUAL WIRE FERRULES



	Wires x AWG (mm2)	Color	Type	Cat. No.	Stripping Length mm (in.)		Ferrule Dimensions mm (in.)					Std. Pk.*
						A	B	C	D2	D1		
	2x22 (2x.50)	White	HH 2x0.50/15	2794.0	11.0 (.43)	14.6 (.57)	8.2 (.32)	1.7 (.07)	3.0 (.12)	5.0 (.20)	500/100	
	2x20 (2x.75)	Gray	HH 2x0.75/15	2775.0	11.0 (.43)	14.6 (.57)	8.2 (.32)	2.0 (.08)	3.0 (.12)	5.5 (.22)	500/100	
	2x20 (2x.75)	Gray	HH 2x0.75/17	2795.0	13.0 (.51)	16.4 (.65)	10.0 (.39)	2.0 (.08)	3.0 (.12)	5.5 (.22)	500/100	
	2x18 (2x1.0)	Red	HH 2x1.0/15	2776.0	11.0 (.43)	15.4 (.61)	8.2 (.32)	2.4 (.09)	3.2 (.13)	5.8 (.23)	500/100	
	2x18 (2x1.0)	Red	HH 2x1.0/20	2796.0	13.0 (.51)	25.2 (.99)	18.0 (.71)	2.4 (.09)	3.2 (.13)	5.8 (.23)	500/100	
	2x16 (2x1.5)	Black	HH 2x1.5/16	2777.0	12.0 (.47)	15.8 (.62)	8.2 (.32)	2.6 (.10)	3.6 (.14)	6.5 (.26)	500/100	
	2x16 (2x1.5)	Black	HH 2x1.5/20	2797.0	16.0 (.63)	19.6 (.77)	12.0 (.47)	2.6 (.10)	3.6 (.14)	6.5 (.26)	500/100	
	2x14 (2x2.5)	Blue	HH 2x2.5/19	2778.0	14.0 (.55)	18.5 (.73)	10.0 (.39)	3.3 (.13)	4.5 (.18)	8.0 (.31)	250/100	
	2x14 (2x2.5)	Blue	HH 2x2.5/21	2798.0	17.0 (.67)	20.5 (.80)	12.0 (.47)	3.3 (.13)	4.5 (.18)	8.0 (.31)	250/100	
	2x12 (2x4.0)	Gray	HH 2x4.0/22	2799.0	14.0 (.63)	22.0 (.87)	12.0 (.47)	3.9 (.15)	5.2 (.20)	9.0 (.35)	100	
	2x10 (2x6.0)	Yellow	HH 2x6.0/23	2800.0	18.0 (.75)	23.0 (.91)	12.0 (.47)	5.0 (.20)	6.2 (.24)	11.4 (.45)	100	
	2x8 (2x10.0)	Red	HH 2x10.0/24	2801.0	19.0 (.75)	24.0 (.94)	12.0 (.47)	6.2 (.24)	7.6 (.30)	13.4 (.53)	100	
	2x6 (2x16.0)	Blue	HH 2x16.0/29	2802.0	16.0 (.55)	29.0 (1.14)	16.0 (.63)	8.9 (.35)	9.5 (.37)	17.2 (.68)	100/50	



* Different standard packs are available for many ferrules. To order the desired standard pack, please use the quantity required as a suffix to the Cat. No. **Example: Type HH2x0.5/15, Cat. No. 2794.0/100 for a standard pack of 100**

INSULATED FERRULES Assortment Box

Handy Assortment Boxes for convenient dispensing and storage of Industry and DIN Standard Insulated Ferrules. Types AB1-S and AB1-D are equipped with five different ferrule sizes. Types AB2-S and AB2-D are equipped with four different ferrule sizes. Contents of each box is listed. Dimensions for industry and DIN standard insulated ferrules are listed on pages 53-54.



AB1-S



AB2-S

Ferrule Qty.	AWG (mm2)	Ferrule Type	Ferrule Cat. No.	Ferrule Color	Type	Cat. No.	Std. Pk.
AB1-S Industry Standard					AB1-S	2884.9	1
50	20 (.50)	HI 0.50/14	2201.0	Orange			
100	20 (.75)	HI 0.75/14	2202.0	White			
100	18 (1.00)	HI 1.0/12	2399.0	Yellow			
100	16 (1.50)	HI 1.5/14	2204.0	Red			
50	14 (2.50)	HI 2.5/14	2206.0	Blue			
AB2-S Industry Standard					AB2-S	2885.9	1
50	12 (.4.0)	HI 4.0/18	2208.0	Gray			
20	10 (6.0)	HI 6.0/20	2210.0	Black			
20	8 (10.0)	HI 10.0/22	2212.0	Ivory			
10	6 (16.0)	HI 16.0/22	2214.0	Green			
AB1-D DIN Standard					AB1-D	2884.0	1
50	20 (.50)	HD 0.50/14	2864.0	White			
100	20 (.75)	HD 0.75/14	2867.0	Gray			
100	18 (1.0)	HD 1.0/14	2871.0	Red			
100	16 (1.5)	HD 1.5/14	2841.0	Black			
50	14 (2.5)	HD 2.5/14	2845.0	Blue			
AB2-D DIN Standard					AB2-D	2885.0	1
50	12 (4.00)	HD 4.0/18	2848.0	Gray			
20	10 (6.00)	HD 6.0/20	2851.0	Yellow			
20	8 (10.00)	HD 10.0/22	2853.0	Red			
10	6 (16.00)	HD 16.0/22	2855.0	Blue			