

**24 Pole
with Ground**
PROTECTION
IP65
RATING



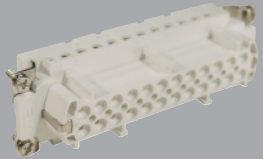
**Component
Parts**

Pre-Assembled Units

Covers

FEMALE

Insert



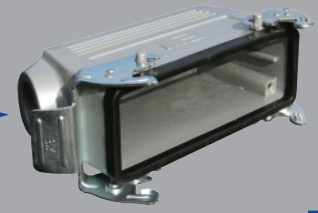
29024

Bulkhead Housing



29044

Hood



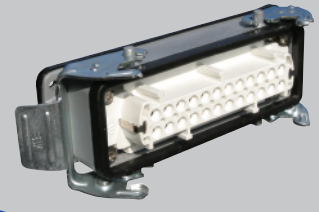
29051
29051M

**Surface Mount
Housing**



1 Hole
29058
29058M

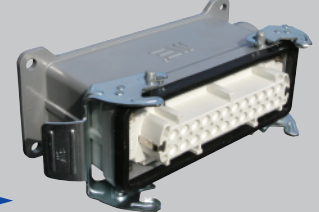
2 Hole
29059
29059M



403040

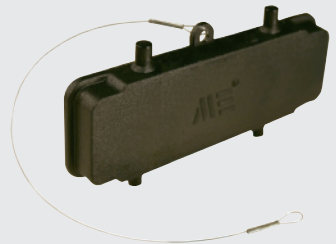


403045
403045M



1 Hole
403046
403046M

2 Hole
403048
403048M

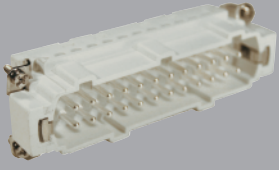


29652

Standard Part Numbers are
NPT threads.
Part numbers with an "M"
are metric thread.

MALE

Insert



29025

Hood



29045
29045M



403043
403043M



29655

Connectors should not be coupled
and decoupled under electrical load.

Inserts

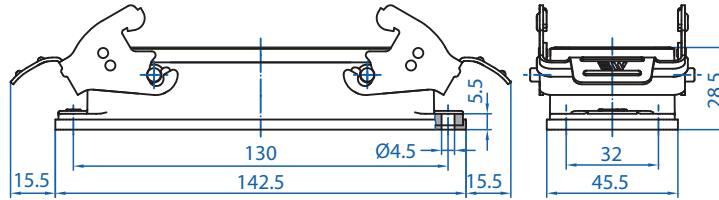
Number of contacts	24 Pole w/ ground
Electrical data to DIN EN61 984	16A 400V 6KV 3
Current	16A
Voltage	400V
Rated Impulse Voltage	6KV
Insulation Resistance	≥10 ¹⁰ Ω
Temperature Range	-40 to 125°C
Flammability	UL94-V0

Contacts

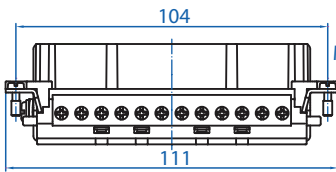
Screw terminal	
Material	Copper alloy
Surface plated	hard-silver
Contact resistance	≤ 1m Ω
Wire size	2.5mm ² / 14 AWG
Torque	0.5Nm
Stripping Length	7.5mm

Metal Hoods & Housings

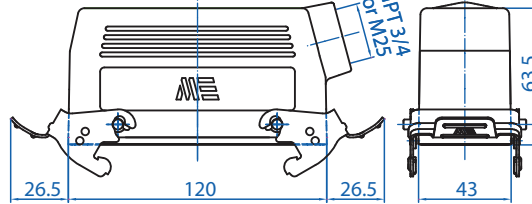
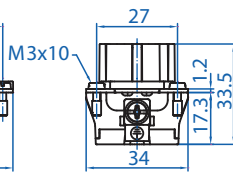
Material	Aluminum
Surface	Powder coated
Seals	NBR
Degree of Protection Acc To	
DIN EN60529 for coupled connectors	IP65
Thread Size	NPT 3/4" or M25



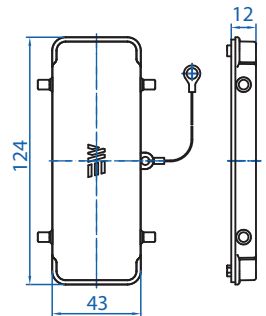
29044



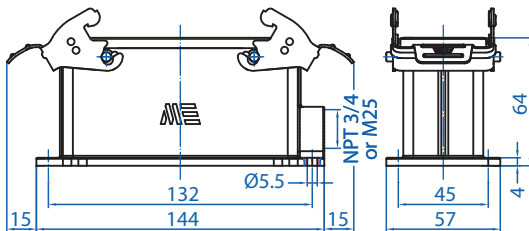
29024



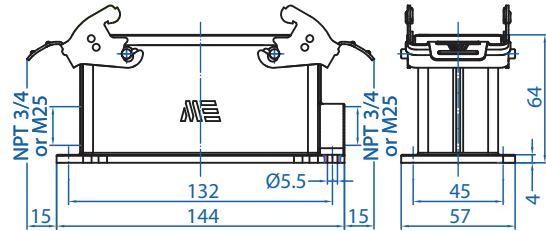
29051



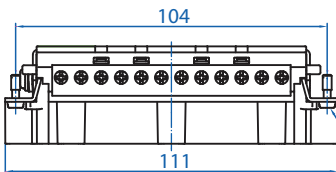
29652



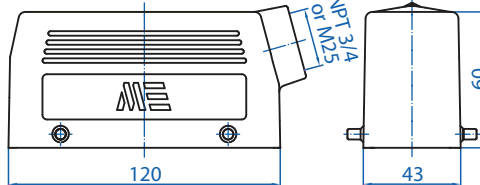
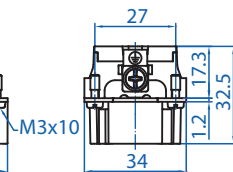
29058



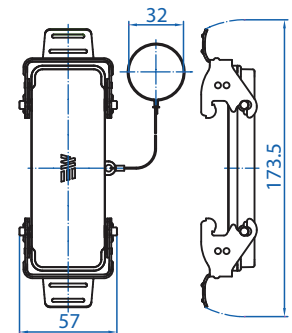
29059



29025



29045



29655



Connectors should not be coupled and decoupled under electrical load.

All dimensions are shown in millimeters. To convert to inches divide by 25.4.