

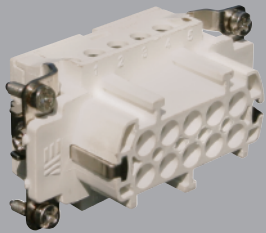
**10 Pole
With Ground**
PROTECTION
IP65
RATING
E307105
CE

**Component
Parts**

Pre-Assembled Units

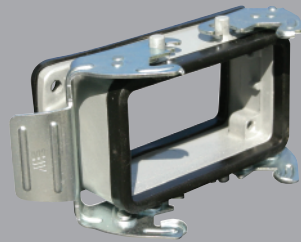
Covers

**FEMALE
Insert**



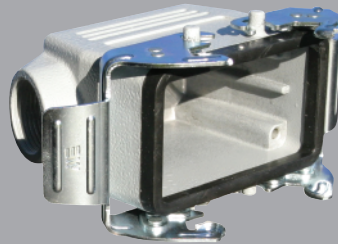
29020

Bulkhead Housing



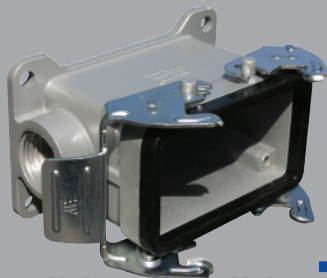
29040

Hood

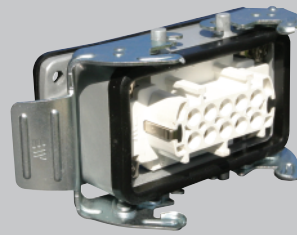


29049
29049M

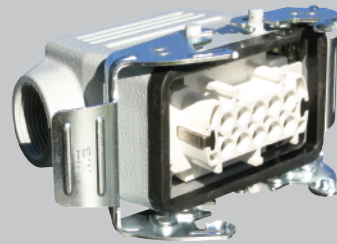
**Surface Mount
Housing**



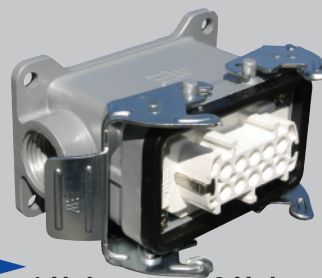
1 Hole **2 Hole**
29054 29055
29054M 29055M



403020



403025
403025M



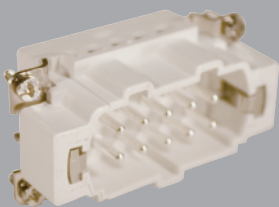
1 Hole **2 Hole**
403026 403028
403026M 403028M



29650

Standard Part Numbers are
NPT threads.
Part numbers with an "M"
are metric thread.

**MALE
Insert**

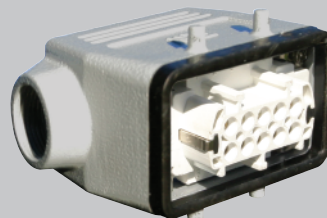


29021

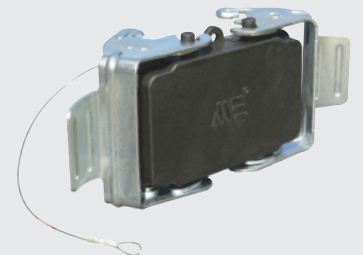
Hood



29041
29041M



403023
403023M



29653

Connectors should not be coupled
and decoupled under electrical load.

Inserts

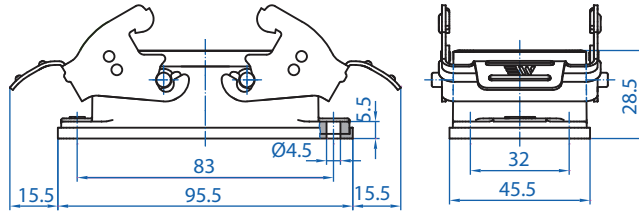
Number of contacts	10 Pole w/ ground
Electrical data to DIN EN61 984	16A 400V 6KV 3
Current	16A
Voltage	400V
Rated Impulse Voltage	6KV
Insulation Resistance	≥10 ¹⁰ Ω
Temperature Range	-40 to 125°C
Flammability	UL94-V0

Contacts

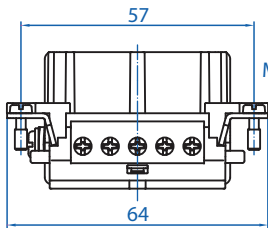
Screw terminal	
Material	Copper alloy
Surface plated	hard-silver
Contact resistance	≤ 1m Ω
Wire size	2.5mm ² / 14 AWG
Torque	0.5Nm
Stripping Length	7.5mm

Metal Hoods & Housings

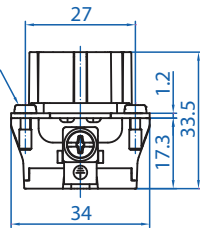
Material	Aluminum
Surface	Powder coated
Seals	NBR
Degree of Protection Acc To	IP65
DIN EN60529 for coupled connectors	IP65
Thread Size	NPT 1/2" or M25



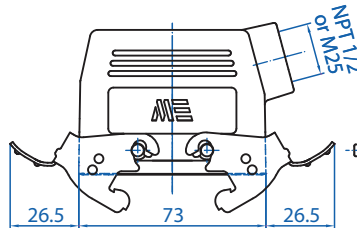
29040



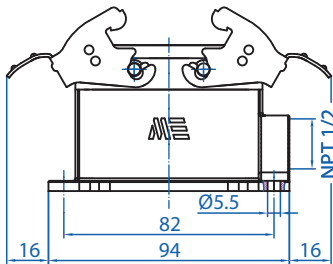
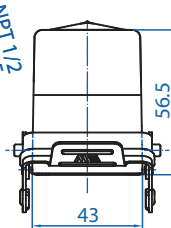
29020



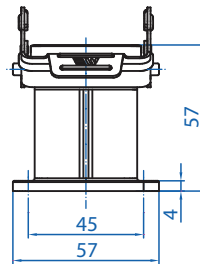
29049



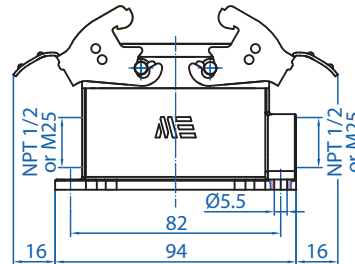
29650



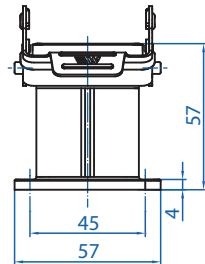
29054



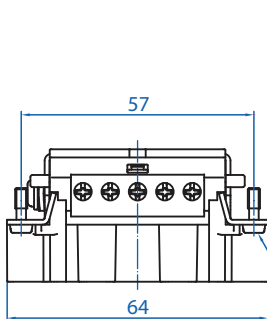
29055



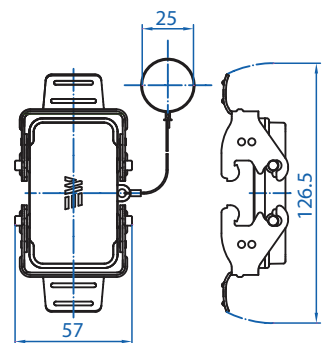
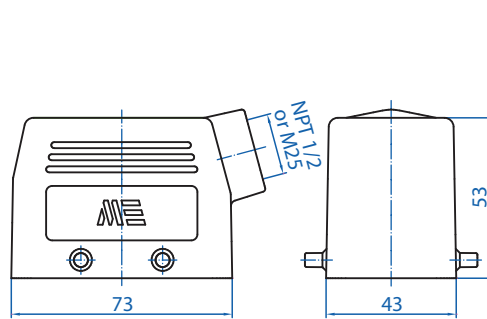
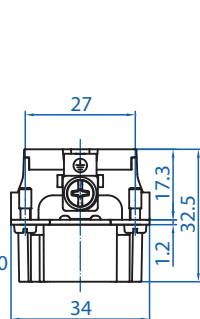
29021



29041



29653



Connectors should not be coupled and decoupled under electrical load.

All dimensions are shown in millimeters. To convert to inches divide by 25.4.

SPECIFICATIONS
10 Pole
with Ground