

Feed-Through

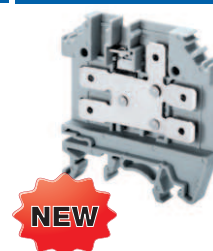
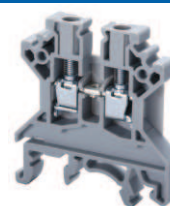
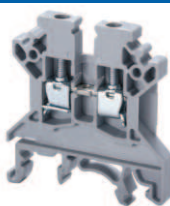
Altech "U" Series Universal Rail Mounting Standard Screw Clamp Feed through terminals are the most versatile terminals for wire-to-wire connection in control, automation, instrumentation and power distribution applications. A special design feature on the flexible foot enables easy mounting and dismantling from the DIN Rail with the help of a screwdriver.

The CTC4U Tab Connection terminals offer quick connection possibility. These terminal blocks are suited for standard 'Fast On' type lugs.

The connection is achieved by pushing the lug / ferrule onto the tab blade of the terminal block.

CTC4U is used primarily in railway systems.

A nice alternative to 'Fast On' style barrier strips.



	CTS2.5U-N			CTS4U-N			CTC4U	
Terminal Width	5 mm			6 mm			NEW	
Height x Length	45 x 43 mm			45 x 43 mm			49.5 x 47 mm	
Stripping Length	8 mm			8 mm			9 mm	
Insulation Material	Polyamide 6.6			Polyamide 6.6			Polyamide 6.6	
Type of Connection	2 screw clamps & 1 tapped hole for cross connect.			2 screw clamps & 1 tapped hole for cross connect.			5 tab connection points and 1 tapped hole for cross connection	
Approvals								
Wire Range	22-12 AWG	0.2-2.5 sq.mm	22-12 AWG	22-10 AWG	0.2-4 sq.mm	22-10 AWG		
Rated Cross Section	1 conductor per clamp 2 same size conductors						0.25-4.0 sq.mm 24-12 AWG 0.25-2.5 sq.mm 24-12 AWG	
Voltage Rating	600 V	1000 V	600 V	600 V	1000 V	600 V	300 V	
Current Rating	25 A	24 A	25 A	35/40 A*	32 A	35/40A*	32 A	
Torque	7 lb-in	0.4 Nm	7 lb-in	7 lb-in	0.5 Nm	7 lb-in		
Tab Blade Size							6.3 x 0.8	



Other Approvals	Cat. No.		Std. Pk.		Cat. No.		Std. Pk.		Cat. No.		Std. Pk.	
	CTS2.5U-N		100		CTS4U-N		100		CTS4U		100	

Terminal Block	CTS2.5U-N	100	CTS4U-N	100	CTS4U	100
----------------	------------------	-----	----------------	-----	--------------	-----

End Plate	EP2.5/4UN	50	EP2.5/4UN	50	EPCTC4U	50
-----------	-----------	----	-----------	----	---------	----

Isolation Partition	PP2.5/4UN	50	PP2.5/4UN	50		
---------------------	-----------	----	-----------	----	--	--

Separator Plate	SP2.5/4UN	100	SP2.5/4UN	100		
-----------------	-----------	-----	-----------	-----	--	--

DIN Rail for ordering information refer to pages 90-91	32mm		35mm		32mm		35mm		32mm		35mm	

End Stop for ordering info. refer to page 92	CA702	50	CA702	50	CA702	50
	CA802	50	CA802	50	CA802	50

Internal Jumper	2 pole	CA721/2	100	CA722/2	100	CA727/2	100
	3 pole	CA721/3	50	CA722/3	50	CA727/3	50
	4 pole	CA721/4	50	CA722/4	50	CA727/4	50
	10 pole	CA721/10	10	CA722/10	10	CA727/10	10
	100 pole	CA721/100	10	CA722/100	10		

Insulated Internal Jumper	2 pole	CA741/2	100	CA742/2	100	CA747/2	100
	3 pole	CA741/3	50	CA742/3	50	CA747/3	50
	4 pole	CA741/4	50	CA742/4	50	CA747/4	50
	10 pole	CA741/10	10	CA742/10	10	CA747/10	10
	100 pole	CA741/100	10	CA742/100	10		

Current Bars	2 pole	CA703/01	100	CA703/01	100	CA703/1	100
	3 pole	CA704/01	100	CA704/01	100	CA704/1	100
	4 pole	CA705/01	100	CA705/01	100	CA705/1	100
	10 pole	CA731/10	100	CA732/10	100	CA732/10	100
	10 pole (breakable)	—		CA732/10-A	100	CA732/10-A	100
	100 pole	CA731/100	10	CA732/100	10	CA732/100	10

Shorting Sleeve & Screw	CA 707/S/Q/01	100	CA 707/S/Q/01	100	CA807/S/Q/01	100
-------------------------	---------------	-----	---------------	-----	--------------	-----

External Jumper	2 pole	CA717/2	100	CA714/2	100	CA707/TS/01	100
	3 pole	CA717/3	100	CA714/3	100		
	4 pole	CA717/4	100	CA714/4	100		
	10 pole	CA717/10	25	CA714/10	25		

Test Socket					CA707/TS/01	100
-------------	--	--	--	--	-------------	-----

Marking Tags	MT5	100	MT6	100	MT6	100
--------------	-----	-----	-----	-----	-----	-----

Mounting Handle

See page 91.



COLOR BLOCKS
(other than standard grey)

When ordering please add color suffix to Cat. No.

Example for color Red: Cat.No./R

Color	Ordering Suffix	
Red	R	
Yellow	Y	
Blue	BU	
Green	G	

Consult Altech for availability.

Orange	O	
Beige	BG	
Dark Brown	DB	
Black	BL	
White	W	

* 35A with one No. 10 AWG and 40A with two No. 12 AWG wires.