

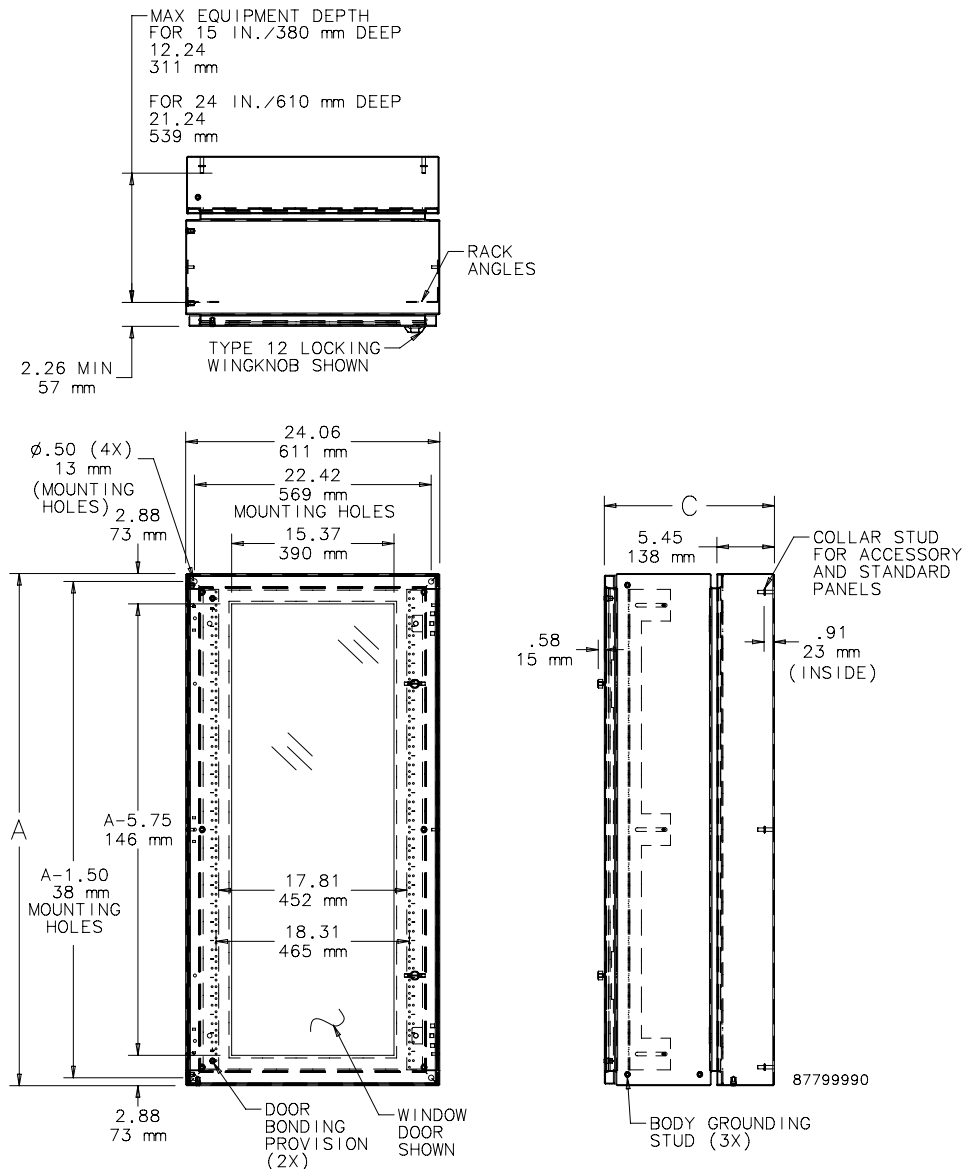
ProTek® DH Type 4 or 12 Double-Hinged Wall-Mount Cabinet

TYPE 4 OR 12 DOUBLE-HINGED CABINET

Bulletin
DWDH2

Standard Sizes ProTek® DH Type 4 or 12 Double-Hinged Wall-Mount Cabinet

Solid Door, Type 4, P66 Catalog Number	Solid Door, Type 12, IP55 Catalog Number	Window Door, Type 12, IP55 Catalog Number	Nominal Size (in.)	Rack Units	A (mm)	A (in.)	C (mm)	C (in.)	Accessory Panel	Standard Panel
PTDHS162415G4	PTDHS162415G	PTDHW162415G	16.00 x 24.00 x 15.00	7	406	15.98	380	14.96	PTPDH1624A	A24P16
PTDHS202415G4	PTDHS202415G	PTDHW202415G	20.00 x 24.00 x 15.00	10	508	20.00	380	14.96	PTPDH2024A	A24P20
PTDHS242415G4	PTDHS242415G	PTDHW242415G	24.00 x 24.00 x 15.00	12	610	24.02	380	14.96	PTPDH2424A	A24P24
PTDHS362415G4	PTDHS362415G	PTDHW362415G	36.00 x 24.00 x 15.00	19	914	35.98	380	14.96	PTPDH3624A	A36P24
PTDHS482415G4	PTDHS482415G	PTDHW482415G	48.00 x 24.00 x 15.00	26	1219	47.99	380	14.96	PTPDH4824A	A48P24
PTDHS242424G4	PTDHS242424G	PTDHW242424G	24.00 x 24.00 x 24.00	12	610	24.02	610	24.02	PTPDH2424A	A24P24
PTDHS362424G4	PTDHS362424G	PTDHW362424G	36.00 x 24.00 x 24.00	19	914	35.98	610	24.02	PTPDH3624A	A36P24
PTDHS482424G4	PTDHS482424G	PTDHW482424G	48.00 x 24.00 x 24.00	26	1219	47.99	610	24.02	PTPDH4824A	A48P24



ProTek® DH Type 4 or 12 Double-Hinged Wall-Mount Cabinet

TYPE 4 OR 12 DOUBLE-HINGED CABINET

Bulletin
DWDH2



Application

This double-hinged wall-mounted cabinet is ideal for protecting 19 in. network equipment from falling dirt, splashing water, dust, and other contaminants. This versatile cabinet mounts to a wall or can be pole mounted with optional pole mounting kit. Designed to hold multiple pieces of voice/data equipment comfortably, it can be mounted to be left or right hinged and comes completely assembled and ready to mount. Both solid door and safety glass window door models are plenum rated.

Features

- Type 12 cabinets available with solid or window doors and have a locking wing knob with two keys. They provide security and convenience in indoor applications.
- Type 4 cabinets have solid doors and a padlock-capable ¼-turn latch. They provide easy operation and locking options in indoor and outdoor applications.
- Solid door provides complete physical and visual protection
- Window door, made with scratch resistant safety glass, allows equipment monitoring without opening the door to minimize contamination
- Double-hinged for easy equipment access
- Front access to center body hinging and back section latches
- Exclusive tool less self-fastening latch is easy to open, yet automatically closes securely
- Latch on front of door eliminates need to access sides to open door or back section latches
- Latch-free sides permit cabinet to be installed tightly into a corner
- Fully welded and ground body and door construction for long-term good appearance and durability
- Foam-in-place seamless gasket around door seals against outdoor air infiltration; is non-absorbing and chemical resistant
- One set of adjustable tapped rack angles included
- Optional square hole rack angles available for equipment mounting flexibility
- Rack angles are plated and are self grounding for durability and safety
- Collar studs provided on back of cabinet for mounting accessory panels
- Accessory panels for mounting additional accessories at the back of the cabinet include tie down points and predrilled holes
- Plenum rated for use in air exchange areas
- Available modifications include paint colors, holes and cutouts, and custom sizes

Construction

- Doors and body made of 14 gauge steel
- Convenient studs provided on center section for bonding and grounding
- Rack angles tapped 10-32 per EIA standards; made of 12 gauge self-grounding plated steel
- Window is clear, .25 in., scratch and impact resistant safety glass
- Optional polycarbonate window (not plenum rated) can be field- or factory-installed. Contact Hoffman Customer Service for factory installation.
- Twenty 10-32 screws included

Finish

Phosphatized steel coated with RAL 7035 light gray textured, low gloss polyester powder paint. Other finishes available—contact Hoffman Customer Service.

Industry Standards

UL 508A File Number E619967: Type 4 or 12
cUL CSA 22,2, No. 94, File Number E61997: Type 4 or 12
NEMA/EEMAC: Type 4 or 12
IEC 60529, IP66 or IP55

Load Rating

Height	Rating
16.00 in.	100 lb (45.4 kg)
20.00 in.	100 lb (45.4 kg)
24.00 in.	100 lb (45.4 kg)
36.00 in.	125 lb (56.7 kg)
48.00 in.	175 lb (79.4 kg)

Options

See the appropriate option table for more information. Options include:

- Accessory Panels
- Polycarbonate Window Inserts
- Rack Angles

Self-Closing Latch Detail

