

Pin Header Assemblies *2mm Headers*



Garry's single and dual row headers on 2MM centers offer a complete line of high density products. Single row headers offer 40 pins per row and the dual row headers offer a total of 80 pins (2 rows of 40).

Garry's single and dual row headers have the "Breakaway" feature that allows you to "Snap-Off" a part to any length you require. Selective plating allows you to have gold on the contact surface and tin lead on the solder area.

Garry's single and dual row spacer headers allow you to stack your PCB's one on top of the other at various heights.

7.4

Materials

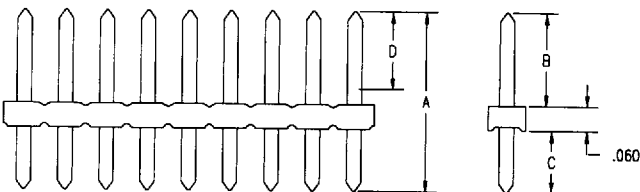
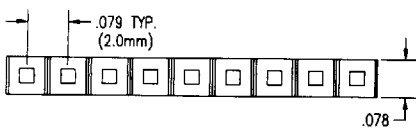
Insulator:

Glass filled thermoplastic polyester, rated UL94V-0. Color: Black

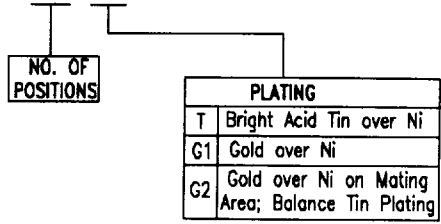
Pins:

Phosphor bronze, 0.5MM square. Gold over nickel. Tin lead over nickel. Selective plating Gold/Tin.

Plating options and specifications are available by contacting either the Garry factory or your local representative.



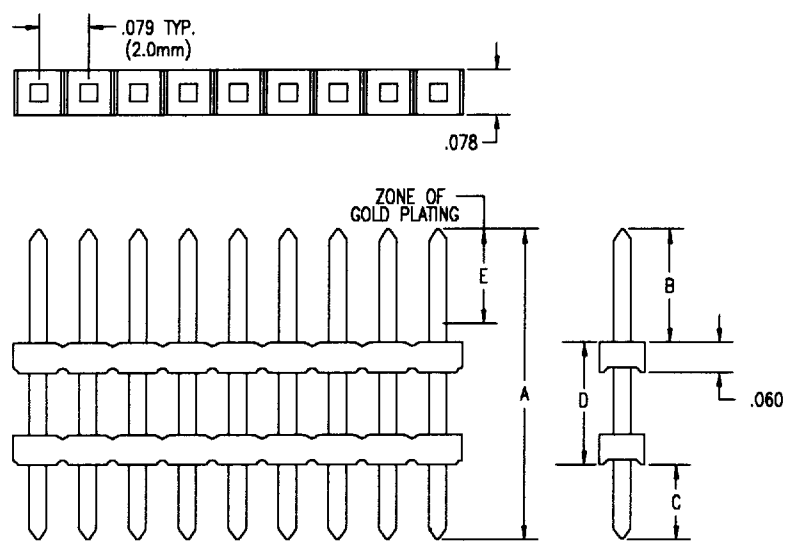
BASE PART NUMBER-XX-XX



BASE PART NUMBER	OVERALL "A"		ABOVE "B"		BELOW "C"		GOLD ON G2 "D"		NUMBER OF POSITIONS
	mm	in	mm	in	mm	in	mm	in	
G2800S	3.81	.150	1.15	.045	1.15	.045	N/A	N/A	2-40
G2802S	8.13	.320	3.55	.140	3.06	.120	3.58	.140	2-40
G2803S	8.50	.335	4.00	.157	3.02	.118	4.00	.157	2-40
G2810S	9.03	.355	4.46	.175	3.08	.120	3.56	.140	2-40
G2804S	9.79	.385	5.73	.225	2.54	.100	3.58	.140	2-40
G2805S	13.85	.545	9.79	.385	2.54	.100	3.58	.140	2-40
G2806S	10.43	.410	6.35	.250	2.54	.100	3.58	.140	2-40
G2807S	14.49	.570	10.19	.400	2.80	.110	3.58	.140	2-40
G2808S	16.50	.650	12.21	.480	2.80	.110	3.58	.140	2-40
G2809S	18.54	.730	14.24	.560	2.80	.110	3.58	.140	2-40



Pin Header Assemblies *2mm Spacer Headers*



7.6

BASE PART NUMBER-XX-XX

NO. OF POSITIONS

PLATING	
T	Bright Acid Tin over Ni
G1	Gold over Ni
G2	Gold over Ni on Mating Area; Balance Tin Plating

BASE PART NUMBER	OVERALL "A"		ABOVE "B"		BELOW "C"		ABOVE "D"		G2 DUPLEX PLATING AVAILABLE 1 END ONLY	NUMBER OF POSITIONS
	mm	in	mm	in	mm	in	mm	in		
GMD1-140/120/075-XX-XX	8.50	.335	3.58	.140	1.91	.075	3.06	.120	3.58 .140	2-40
GMD1-140/120/125-XX-XX	9.79	.385	3.58	.140	3.71	.125	3.06	.120	3.58 .140	2-40
GMD1-140/160/110-XX-XX	10.43	.410	3.58	.140	2.80	.110	4.06	.160	3.58 .140	2-40
GMD1-140/295/110-XX-XX	13.85	.545	3.58	.140	2.80	.110	7.49	.295	3.58 .140	2-40
GMD1-140/320/110-XX-XX	14.49	.570	3.58	.140	2.80	.110	8.13	.320	3.58 .140	2-40
GMD1-140/400/110-XX-XX	16.50	.650	3.58	.140	2.80	.110	10.18	.400	3.58 .140	2-40
GMD1-140/480/110-XX-XX	18.54	.730	3.58	.140	2.80	.110	12.22	.480	3.58 .140	2-40
GMD1-100/120/100-XX-XX	8.13	.320	2.54	.100	2.54	.100	3.06	.120	3.58 .140	2-40
GMD1-100/135/100-XX-XX	8.50	.335	2.54	.100	2.54	.100	3.44	.135	3.58 .140	2-40
GMD1-100/210/100-XX-XX	10.43	.410	2.54	.100	2.54	.100	5.34	.210	3.58 .140	2-40
GMD1-100/370/100-XX-XX	14.49	.570	2.54	.100	2.54	.100	9.40	.370	3.58 .140	2-40
GMD1-100/450/100-XX-XX	16.50	.650	2.54	.100	2.54	.100	11.58	.450	3.58 .140	2-40
GMD1-100/530/100-XX-XX	18.54	.730	2.54	.100	2.54	.100	13.46	.530	3.58 .140	2-40

