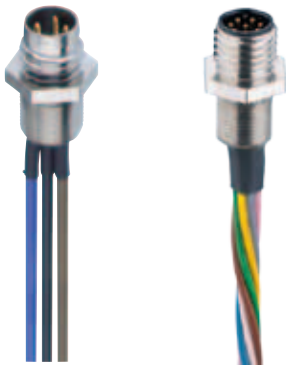


**M8-Receptacle Connectors In Accordance With IEC 61076-2-104**

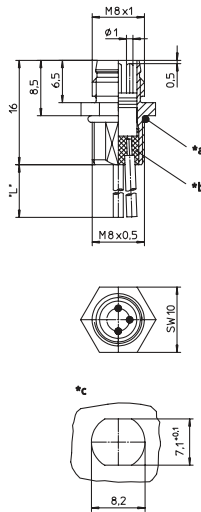
**RSMF/0.5 M | RKMf/0.5 M**



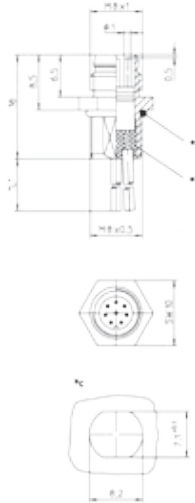
**Male, 3-, 4-, and 8-Pole**

Receptacle connector, M8 male connector for front mounting, assembled stranded wire, solder contacts potted with epoxy, chassis side thread M8 x 0.5 (panel nut RSKF 8).

**RSMF 3/0.5 M**



**RSMF 8/0.5 M**



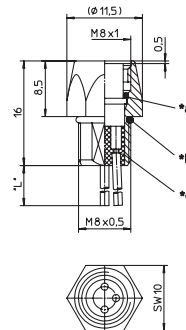
\*a O-ring enclosed separately  
\*b solder contacts potted with epoxy  
\*c cut out  
\*L\* 0.5 m



**Female, 3-, 4-, and 8-Pole**

Receptacle connector, M8 female connector for front mounting, assembled stranded wire, solder contacts potted with epoxy, chassis side thread M8 x 0.5 (panel nut RSKF 8).

**RKMf/0.5 M**

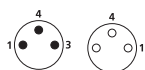


\*d O-Ring  
\*a O-ring enclosed separately  
\*b solder contacts potted with epoxy  
\*c cut out  
\*L\* 0.5 m

**Pin Assignments**

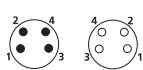
**Face Views**

**M8 - 3 poles**



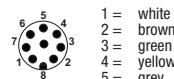
- 1 = brown
- 2 = blue
- 4 = black

**M8 - 4 poles**



- 1 = brown
- 2 = white
- 3 = blue
- 4 = black

**M8 - 8 poles**



- 1 = white
- 2 = brown
- 3 = green
- 4 = yellow
- 5 = grey
- 6 = pink
- 7 = blue
- 8 = red



Be Certain with Belden

**M8-Receptacle Connectors In Accordance With IEC 61076-2-104**  
 RSMF/0.5 M | RKMF/0.5 M

**Technical Data**

**Environmental**

Degree of protection IP 67 / NEMA 6P  
 Operating temperature range -25°C (-13°F) / +80°C (+176°F)

**Mechanical**

Housing / Molded body CuZn, nickel-plated  
 Insert PA  
 Contact CuZn, pre-nickel and 0.8 microns gold-plated  
 O-ring FKM

**Electrical**

Contact resistance RSMF: ≤ 5 mΩ  
 Nominal current at 40°C RSMF 8: 1 A  
 RSMF: 4 A  
 Nominal voltage 60 V  
 RSMF 8: 32 V  
 Test voltage 1.5 kV eff. / 60 s  
 RSMF 8: 0.8 kV eff. / 60 s  
 Insulation resistance > 10<sup>9</sup> Ω  
 Pollution degree 3

| Part Number  |              | Pins | Characteristics   |
|--------------|--------------|------|---|
| RSMF 3/0,5 M | RKMF 3/0,5 M | 3    |   |
| RSMF 4/0,5 M | RKMF 4/0,5 M | 4    |   |
| RSMF 8/0,5 M |              | 8    |   |

Receptacles