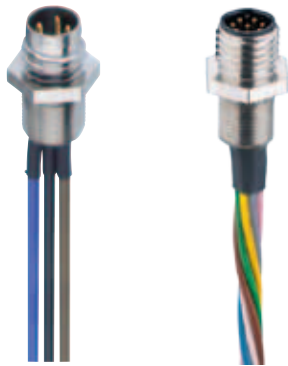


M8-Receptacle Connectors In Accordance With IEC 61076-2-104

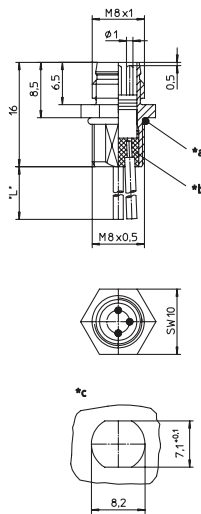
RSMF/0.5 M | RKMf/0.5 M



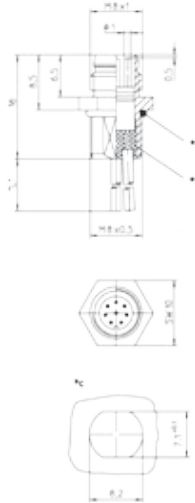
Male, 3-, 4-, and 8-Pole

Receptacle connector, M8 male connector for front mounting, assembled stranded wire, solder contacts potted with epoxy, chassis side thread M8 x 0.5 (panel nut RSKF 8).

RSMF 3/0.5 M



RSMF 8/0.5 M



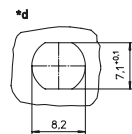
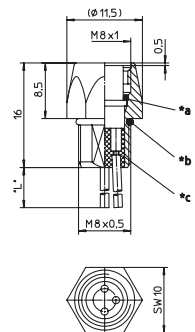
*a O-ring enclosed separately
 *b solder contacts potted with epoxy
 *c cut out
 L 0.5 m



Female, 3-, 4-, and 8-Pole

Receptacle connector, M8 female connector for front mounting, assembled stranded wire, solder contacts potted with epoxy, chassis side thread M8 x 0.5 (panel nut RSKF 8).

RKMf/0.5 M

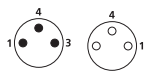


*a O-Ring
 *b O-ring enclosed separately
 *c solder contacts potted with epoxy
 *d cut out
 L 0.5 m

Pin Assignments

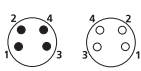
Face Views

M8 - 3 poles



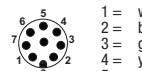
1 = brown
 2 = blue
 4 = black

M8 - 4 poles



1 = brown
 2 = white
 3 = blue
 4 = black

M8 - 8 poles



1 = white
 2 = brown
 3 = green
 4 = yellow
 5 = grey
 6 = pink
 7 = blue
 8 = red



Be Certain with Belden

M8-Receptacle Connectors In Accordance With IEC 61076-2-104
 RSMF/0.5 M | RKMF/0.5 M

Technical Data

Environmental

Degree of protection IP 67 / NEMA 6P
 Operating temperature range -25°C (-13°F) / +80°C (+176°F)

Mechanical

Housing / Molded body CuZn, nickel-plated
 Insert PA
 Contact CuZn, pre-nickeled and 0.8 microns gold-plated
 O-ring FKM

Electrical

Contact resistance RSMF: ≤ 5 mΩ
 Nominal current at 40°C RSMF 8: 1 A
 RSMF: 4 A
 Nominal voltage 60 V
 RSMF 8: 32 V
 Test voltage 1.5 kV eff. / 60 s
 RSMF 8: 0.8 kV eff. / 60 s
 Insulation resistance > 10⁹ Ω
 Pollution degree 3

Part Number		Pins	Characteristics
RSMF 3/0,5 M	RKMF 3/0,5 M	3	 
RSMF 4/0,5 M	RKMF 4/0,5 M	4	 
RSMF 8/0,5 M		8	 

Receptacles