

Cable sockets and plugs for self-assembly

Product features

- connection of
 - inductive or capacitive proximity switches
 - photoelectric barriers
 - pressure-operated switches etc.

Variations

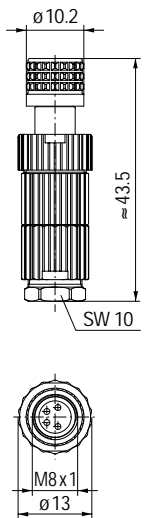
- cable sockets and connectors

Basic data

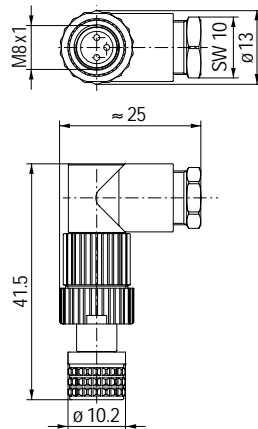
- protection class IP 67 (IEC 60529)
- strain relief by means of clamping cage
- type of termination pin penetration

Further information

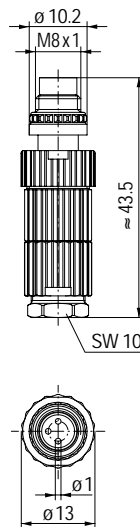
see technical data in the catalog Circular connectors for automation technique DS 280 490-450.



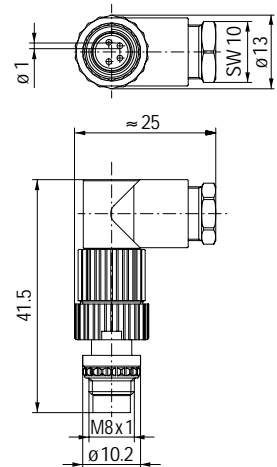
ELKA...



ELWIKA...



ELST...



ELWIST...

| poles | | socket | | plug | | operating voltage |
|-------|--------|---------------|---------------|---------------|---------------|-------------------|
| | | straight ELKA | angled ELWIKA | straight ELST | angled ELWIST | |
| 3 | 3008 V | 933 366-100 | 933 368-100 | 933 406-100 | 933 408-100 | UC 60 V (≈) |
| 4 | 4008 V | 933 367-100 | 933 369-100 | 933 407-100 | 933 409-100 | UC 60 V (≈) |

Example for placing orders: 933 366-100 ELKA 3008 V