

M8-Receptacle Connectors In Accordance With IEC 61076-2-104

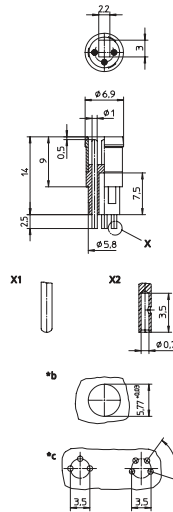
RSMEJ | RSMEH | RSMED | RSMEB



Male, 3 and 4-Pole

Receptacle connector, M8 male connector for sensors, with snap-in joint, translucent ring, short solder contacts, hollow contacts (RSMEJ) or solid contacts (RSMEH) on solder side.

RSMEJ | RSMEH



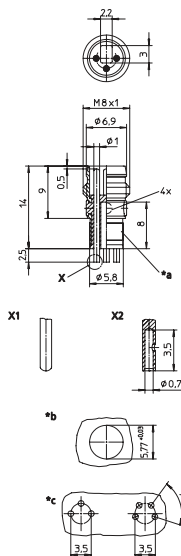
*X1 solid
*X2 hollow
*b cut out
*c hole pattern in printed circuit board



M8 Male, 3 and 4-Pole

Receptacle connector, M8 male connector for sensors, with combined snap-in/threaded joint, 4 light indicator windows, mounting hole for LED, short solder contacts, hollow contacts (RSMED) or solid contacts (RSMEB) on solder side

RSMED | RSMEB

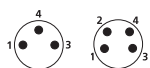


*X1 solid
*X2 hollow
*b cut out
*c hole pattern in printed circuit board

Pin Assignments

Face Views

M8 - 3 and 4 poles





Be Certain with Belden

M8-Receptacle Connectors In Accordance With IEC 61076-2-104
 RSMEJ | RSMEH | RSMED | RSMEB

Technical Data

Environmental







Degree of protection IP 67 / NEMA 6P
 Operating temperature range -25°C (-13°F) / +80°C (+176°F)

Mechanical

Housing / Molded body CuZn, nickel-plated
 Insert PA
 Contact CuZn, pre-nickeled and 0.8 microns gold-plated
 Mode of connection solder connection
 Connectable conductor max. 0.25 mm²

Electrical

Contact resistance ≤ 5 mΩ
 Nominal current at 40°C 4 A
 Nominal voltage 60 V
 Rated voltage 63 V
 Test voltage 1.5 kV eff. / 60 s
 Insulation resistance > 10⁹ Ω
 Pollution degree 3

Part Number	Pins	Contact (soldering side)	Characteristics	
RSMEJ 3 RSMED 3	3	hollow contact	 	
RSMEH 3 RSMEB 3		solid contact	 	
	RSMED 4	4	hollow contact	 
RSMEH 4 RSMEB 4		solid contact	