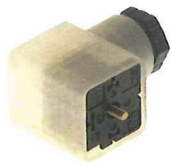


INDUSTRIAL-CONNECTORS GDM-SERIES



Female connectors GDM/GM with light indication and or surge protection built in. Standard products listed below. Consult factory for other variations and special configurations to custom requirements.

WITH LIGHT INDICATION AND SURGE PROTECTION

	Connector Type			
	GDM 2009	GDM 2011	GDM 2012	GM 209
Active Components	WIRE O.D. 4.5-7mm	WIRE O.D. 6-10 mm	1/2" N.P.T.F.	WIRE O.D. 4.5-7mm
24 Volt Incandesant #1 #2	GDM 2009 UL 24 927 801-108	GDM 2011 UL 24 927 811-002	GDM 2012 UL 24 927 801-002	GDM 209 UL 24 927 801-109
24 Volt L.E.D. #1 #2	GDM 2009 UL 24 LED 927 801-101	GDM 2011 UL 24 LED 927 801-102	GDM 2012 UL 24 LED 927 801-106	GDM 209 UL 24 LED 927 801-107
110 Volt Neon #1 #2	GDM 2009 UL 110 927 801-110	GDM 2011 UL 110 927 811-011	GDM 2012 UL 110 927 812-011	GDM 209 UL 110 927 801-111
230 Volt Neon #1 #2	GDM 2009 UL 230 927 801-112	GDM 2011 UL 230 927 801-114	GDM 2012 UL 230 927 801-115	GDM 209 UL 230 927 801-116
Fly Bac Diode 1N4007 #1 #2	GDM 2009 1N4007 927 801-118	GDM 2011 1N4007 927 801-119	GDM 2012 1N4007 927 801-120	GDM 209 1N4007 927 801-121
24 Volt/LED 1N4007 DIODE #1 #2	GDM 2009 LED 24 1N4007 927 801-765	GDM 2011 LED 24 1N4007 927 801-764	GDM 2012 LED 24 1N4007 927 801-141	GDM 209 LED 24 1N4007 927 801-803
110 Volt M.O.V. V180 Ma1 #1 #2	GDM 2009 MOV: V180 MA1 927 801-135	GDM 2011 MOV: V180 MA1 927 801-136	GDM 2012 MOV: V180 MA1 927 801-137	GDM 209 MOV: V180 MA1 927 801-138
110 Volt MOV/Neon V180 Ma1 #1 #2	GDM 2009 110 Neon V180 MA1 927 801-143	GDM 2011 110 Neon V180 MA1 927 801-144	GDM 2012 110 Neon V180 MA1 927 801-145	GDM 209 110 Neon V180 MA1 927 801-146
Component Ratings - MOV & DIODES				
Component	Continious Volage	Continious RMS Volage	Transient Peak Curr.	Maximum Clamp Voltage
DIODE 1N4007	1,000	700	30	N/A
MOV V22 MA1B	18	14	40	51
MOV V39 MA1B	28	22	40	86
MOV V180 MA1A	144	105	40	310