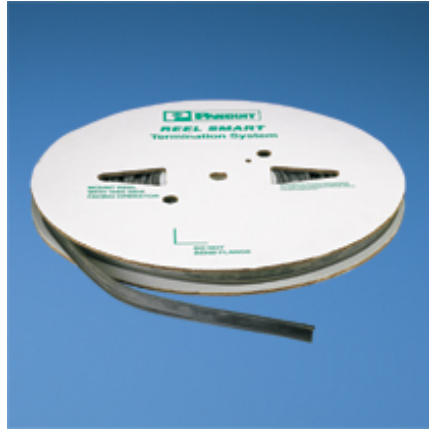


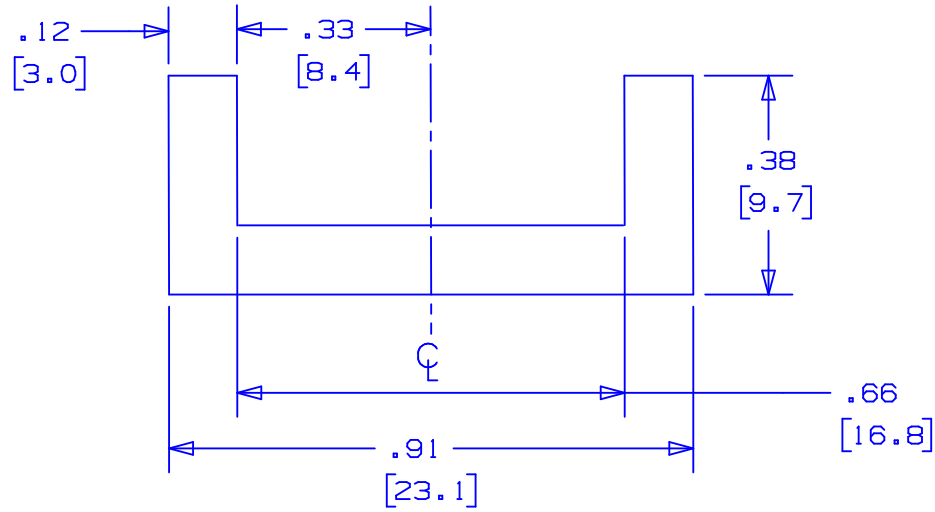


PCSSH-B-CR



- Black neoprene sleeving slips on *Pan-Steel™* Stainless Steel Ties and custom length banding and is used on applications requiring improved gripping on non-resilient objects, separation between dissimilar metals, and added bundle protection. Can be used indoors or outdoors (excellent ultraviolet resistance, good resistance to petroleum, and many chemicals). Provides full separation between the ties and the material to which you are fastening.
- Operating temperature range 41°F – 200°F (5°C – 93°C)
- Supplied in 100 ft (30.5m) reels
- "C" shaped channel design available in types PCSS-B-CR and PCSH-B-CR cushion sleeve
- "U" shaped channel design available in type PCSSH-B-CR cushion sleeve

▪ Part Number	PCSSH-B-CR
▪ RoHS Compliancy Status	Compliant
▪ Part Description	Cushion sleeving used with super-heavy cross section ties or custom length banding system, "U" shaped channel design.
▪ Color	black
▪ Length (ft.)	100
▪ Length (m)	30.5
▪ Width (In.)	.91
▪ Width (mm)	23.1
▪ Pricing Description	Cushion Sleeving, Super-Heavy, 100ft (30.5m) x .91" (23.1mm) Wd
▪ Min. Order UOM	RL
▪ Min. Order Qty.	1
▪ BOM Qty. (# of Pkgs.)	



NOTES:

1. MAT'L. - NEOPRENE:
RATING AS REQUIRED TO MEET MIL-R-6855 SPEC.
2. COLOR - BLACK
- Ⓐ 3. PART WEIGHT: 8.7 LBS, PER 100 FT.
4. 60±5 SHORE A DUROMETER RATING
5. TEMPERATURE RANGE OF -40°F (-40°C) TO 200°F (93°C)
6. DIM'S IN [BRACKETS] ARE MILLIMETERS.

S41202_01

01	6/05	JAMB		Ⓐ REMOVED PART WGT. "43.5 lbs PER 500 FT."	12683						MLTEH/SH CUSHION SLEEVING PCSSH-B-CR
00	5/05	JMMR	EJD	DRAWING RELEASED	12198	SKB	CCH				
REV	DATE	BY	CHK	DESCRIPTION	ECN #	PM	CUST	DRAWN BY	CHK'D	SCALE	DRAWING NO.
								JMMR	EJD	3x	S41202