



## TM3S8-C



- Unique cradle design provides maximum stability for cable bundle
- Low profile design keeps bundle close to mounting surface where overhead space is limited
- ‡Cable tie cross section sizes: M = Miniature, I = Intermediate, S = Standard, HS = Heavy Standard, LH = Light-Heavy

■ Part Number	TM3S8-C
■ RoHS Compliancy Status	Compliant
■ Part Description	Cable Tie Mount - Screw Applied
■ Product Type	Cable Tie Mounts - Screw / Rivet Mounted
■ Material	Nylon 6.6
■ Color	Natural
■ UL Recognized	E136577
■ Height (In.)	.37
■ Height (mm)	9.4
■ Length (In.)	.86
■ Length (mm)	21.9
■ Width (In.)	.61
■ Width (mm)	15.5
■ CE Compliant	CT-ACC2 / 10.96
■ Environment	Indoors
■ Flammability Rating	UL94 V-2
■ Hole Diameter (In.)	.18
■ Hole Diameter (mm)	4.5
■ Max. Bundle Diameter (mm)	7.6
■ Mounting Method	#8 (M4) screw
■ Pricing Description	Cable Tie Mount, .62" (15.8mm)W, #8 Screw (M4), Nylon
■ Screw Size	#8 (M4)
■ Screw Size Metric	M4
■ Used With Cable Ties	M, I, S, LH
■ Min. Order UOM	PC
■ Min. Order Qty.	100

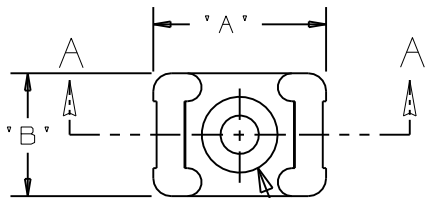
THIS COPY IS PROVIDED ON A RESTRICTED BASIS AND IS NOT TO BE USED IN ANY WAY DETRIMENTAL TO THE INTERESTS OF PANDUIT CORP.

PANDUIT PART NO.*	MAT'L SUFFIX	RECOMMENDED FASTENER	'A'	'B'	'C'	'D'	'E'	'F'	'G' 'REF'	'H' 'REF'	'J' 'REF'	USE WITH THESE CABLE TIE CROSS SECTIONS	WEIGHT (g) lbs/100 pcs.
TM3S8	NONE -0 -30 -49	#8 (M4) SCREW	0.863 [ 21.9 ]	0.610 [ 15.5 ]	0.373 [ 9.4 ]	0.320 [ 8.1 ] ±.020 [ 0.5 ]	0.088 [ 2.2 ] ±.020 [ 0.5 ]	0.208 [ 5.3 ]	0.105 [ 2.7 ]	0.325	0.180	MINIATURE INTERMEDIATE STANDARD LT. HEAVY	0.369 [ 167.5 ]
TM3S10	NONE -0 -30	#10 (M5) SCREW							0.115 [ 2.9 ]				0.385
TM3S25	NONE -0 -30	1/4" (M6) SCREW	0.879 [ 22.3 ]	0.629 [ 16.0 ]	0.379 [ 9.6 ]			0.210 [ 5.3 ]	0.155 [ 3.9 ]	0.506	0.262		0.296 [ 134.5 ]
TM3S2510	-30 -39	#10 (M5) SCREW	0.873 [ 22.2 ]	0.620 [ 15.7 ]				0.212 [ 5.4 ]	0.120 [ 3.0 ]	0.480	0.200		0.321 [ 145.5 ]

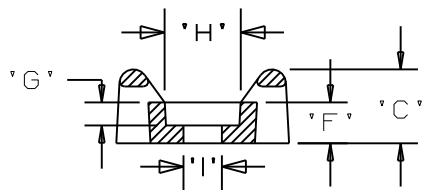
NOTES:

- \*1. SEE CURRENT PRICE SHEET FOR PART NUMBER SUFFIX DESIGNATION FOR PACKAGE SIZE.
- 2. HOLE DIMENSIONS SHOULD ACCOMMODATE SPECIFIED RECOMMENDED FASTENER.

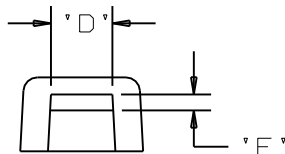
MAT'L SUFFIX	MATERIAL	COLOR
NONE	NYLON 6/6	NATURAL
-0	WEATHER RESISTANT NYLON	BLACK
-30	HEAT STABILIZED NYLON	
-39	HEAT STABILIZED NYLON	NATURAL
-49	IMPACT MODIFIED NYLON	




SEE NOTE 2



SECTION A - A



DIMENSIONS IN BRACKETS ARE METRIC [ mm ]	
CAD FILENAME/LAYERS	G00239EN_PB_TM3S_11
 <b>PANDUIT</b> CORP. TINLEY PARK, ILLINOIS	
TM3S - TIE MOUNT	
UNLESS OTHERWISE SPECIFIED, DIMENSIONAL TOLERANCES ARE: (.X) ±0.05 [ 1.3 ] (.XXX) ±0.010 [ 0.25 ] (.XX) ±0.02 [ 0.5 ] ANGLES ±5°	UNLESS OTHERWISE SPECIFIED, ALL DIMENSIONS ARE GIVEN IN INCHES, THIRD ANGLE PROJECTION.
DRAWN BY <b>AJV</b>	MAT'L: <b>SEE TABLE</b>
DATE <b>12/17/96</b>	SCALE <b>NONE</b>
CHK'D	DRAWING NO. <b>GB0239EN</b>
	DWG <b>A</b> SIZE

REV	DATE	BY	CHK	DESCRIPTION	ECN	R	CUST	SUP
11	4/16/07	DJSM		ADDED DECIMAL PLACE TO TABLE, REMOVED MATERIALS -69 AND -100	GB0239EN	11		
10	03/19/07	DJSM		ADDED TM3S2510, ADDED MATERIAL -39, CHANGED TOLERANCES	GB0239EN	10		