



## SST2S-M

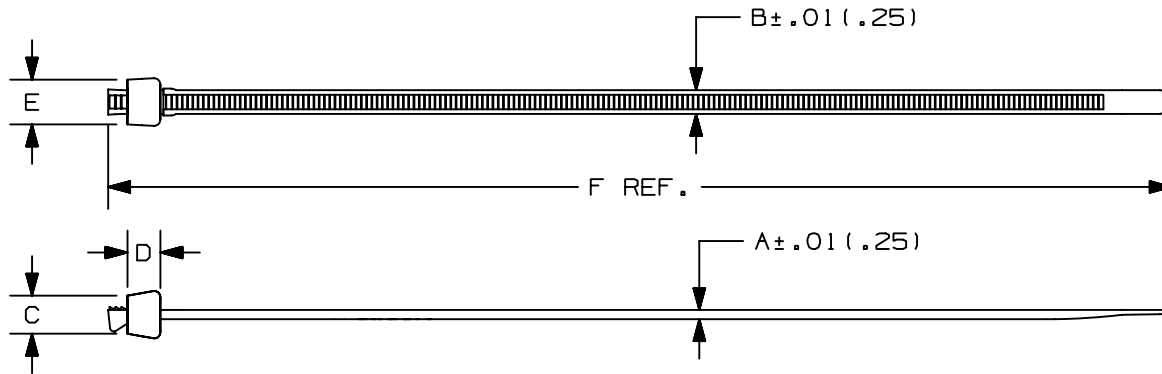


- For indoor use
- Used for normal bundling and through-panel applications
- Small head height allows more efficient use of space in compact areas
- Exclusive two-piece design offers the lowest threading force in the industry
- Average 14% lighter than one-piece cable ties
- Releasable prior to final tensioning for bundle modifications
- Straight Tip design

■ Part Number	SST2S-M
■ RoHS Compliancy Status	Compliant
■ Part Description	Cable Tie, Releasable, 6.7", Standard cross section
■ Product Type	Cable Ties
■ Material	Nylon 6.6
■ Color	Natural
■ CSA Certified	Yes
■ Mil. Std. Part Number	MS3367-1-9
■ UL Listed (File #E56854)	No
■ UL Recognized (File #E56854)	Yes
■ Length (In.)	6.7
■ Length (mm)	172
■ Width (In.)	.180
■ Width (mm)	4.6
■ CE Compliant	Yes
■ Cross Section	Standard
■ Head Height (In.)	.250
■ Head Height (mm)	6.4
■ Head Width (In.)	.310
■ Head Width (mm)	7.9
■ Locking Style	Releasable
■ Material Flammability Rating	UL 94V-2
■ Max. Bundle Diameter (In.)	1.75
■ Max. Bundle Diameter (mm)	45
■ Max. Continuous Use Temperature	185°F (85°C)
■ Min. Loop Tensile Strength (Lbs.)	50

■ Min. Loop Tensile Strength (N)	222
■ Pricing Description	Cable Tie, 2-Piece, 6.7"L (172mm), Standard, Nylon, Natural
■ Thickness (In.)	.045
■ Thickness (mm)	1.2
■ Tool	GTS, GTSL, GS2B, GTH, GS4H, PTS, PTH, PPTS, STS2, STH2
■ Min. Order UOM	PC
■ Min. Order Qty.	1000
■ BOM Qty. (# of Pkgs.)	

THIS COPY IS PROVIDED ON A RESTRICTED BASIS AND IS NOT TO BE USED IN ANY WAY DETRIMENTAL TO THE INTERESTS OF PANDUIT CORP.



PANDUIT PART NO.*	BUNDLE DIA.		A in (mm)	B in (mm)	C in (mm)	D in (mm)	E in (mm)	F in (mm)	MIN. LOOP TENSILE lbs. (N)	CROSS-SECTION	WEIGHT lbs./100pcs. (g)
	MIN. in (mm)	MAX. in (mm)									
SST1.5S	.06 (1.5)	1.25 (32)	.045 (1.2)	.180 (4.6)	.250 (6.4)	.165 (4.2)	.310 (7.9)	5.7 (146)	50 (222)	STANDARD	.18 (80)
SST2S	.06 (1.5)	1.75 (45)	.045 (1.2)	.180 (4.6)	.250 (6.4)	.165 (4.2)	.310 (7.9)	6.7 (172)	50 (222)	STANDARD	.22 (100)
SST3S	.06 (1.5)	3.00 (76)	.048 (1.2)	.180 (4.6)	.250 (6.4)	.165 (4.2)	.310 (7.9)	11.0 (279)	50 (222)	STANDARD	.44 (201)
SST4S	.06 (1.5)	4.00 (102)	.048 (1.2)	.180 (4.6)	.253 (6.4)	.200 (5.1)	.350 (8.9)	15.0 (381)	50 (222)	STANDARD	.59 (266)

**NOTES:**

- \*1) SEE CURRENT PRICE SHEET FOR PART NUMBER SUFFIX DESIGNATION FOR PACKAGE SIZE AND PART COLOR.
- 2) RECOGNIZED UNDER THE COMPONENT PROGRAM OF UNDERWRITERS LABORATORIES INC.

										DIMENSIONS IN PARENTHESES ARE IN METRIC UNITS.		
										PANDUIT		
										CORP. TINLEY PARK, ILLINOIS		
										STA-STRAP CABLE TIES SS SERIES		
										UNLESS OTHERWISE SPECIFIED, DIMENSIONAL TOLERANCES ARE: (.X) ± .005 (XXX) ± .020(.51) (.XX) ± .02(.5) ANGLES ± .005		
										UNLESS OTHERWISE SPECIFIED, ALL DIMENSIONS ARE GIVEN IN INCHES, THIRD ANGLE PROJECTION.		
										DRAWN BY JABO		
										DATE 11-29-01		
										CHK'D		
										MAT'L: NYLON 6/6		
										SCALE NONE		
4	11-29-01	JABO		REVISED AND REDRAWN	5550	4					DRAWING NO. SS-5550	DWG SIZE A
REV	DATE	BY	CHK	DESCRIPTION	ECN	R	CUST	SUP			SHEET 2 OF 3	