

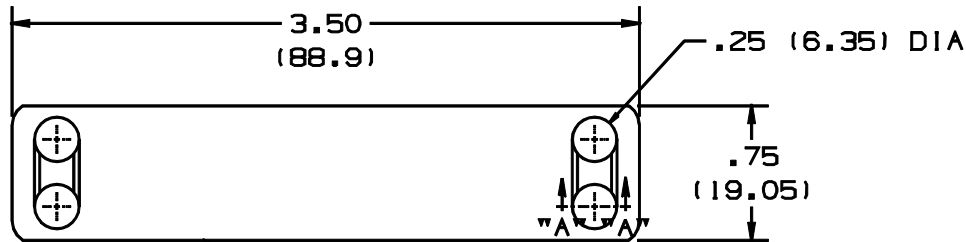


MMP350-C

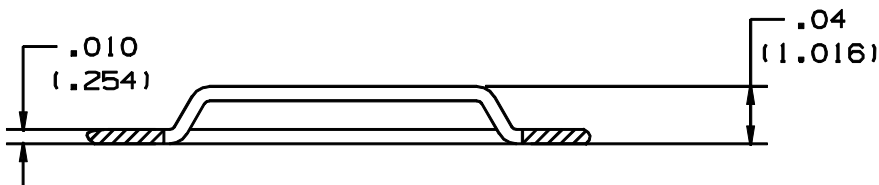


- Provides permanent identification of pipes, conduit, valves, cables and equipment in harsh environments
- Designed for use with PANDUIT® Pan-Steel® Stainless Steel Cable Ties for fast installation at lowest installed cost
- All marker plates/tags can be embossed or laser etched with PANDUIT Factory Custom Marking Service
- For on-site custom marking use the metal indenting machine
- Designated plates feature easy feed design with a raised slot to simplify cable tie installation and improve productivity
- *PANDUIT* stainless steel cable ties, strapping, stainless steel, brass and aluminum marker plates/tags and anodized aluminum locks can be custom marked for identification of equipment, cables, hoses, pipes, conduit, etc. in petrochemical plants, power plants, pulp and paper mills, breweries, and many other applications. The *PANDUIT* in-house computer controlled custom marking systems provide sharp, crisp, high quality legends. Sequential numbering for serialization is available.

■ Part Number	MMP350-C
■ RoHS Compliancy Status	Compliant
■ Part Description	Marker plate, four holes, 304 Stainless Steel, 3.50" x .75".
■ Product Type	Marker Plate
■ Material	304 Stainless Steel
■ Color	Natural
■ Length (In.)	3.50
■ Length (mm)	89
■ Width (In.)	.75
■ Width (mm)	19
■ Max. Lines	3
■ Pricing Description	Marker Plate, 304 SS, 4 Hole, 3.5" x .75" x .010" (89mm x 19mm x .25mm) thk
■ Thickness (In.)	.010
■ Thickness (mm)	.25
■ Min. Order UOM	PC
■ Min. Order Qty.	100
■ BOM Qty. (# of Pkgs.)	



AISI NO. 5 EDGES ROLLED TO ELIMINATE SHARPNESS.



SECT "A"- "A"
8x

PART NO.	MATERIAL
MMP350-C	304 SS.
MMP350-C316	316 SS.

NOTES:

- DIMENSIONS IN () ARE mm.
- CUSTOM PERMANENT MARKING AVAILABLE. CONSULT FACTORY.
- USE WITH STD. CROSS SECTION MLT'S.
- TOLERANCES (UNLESS OTHERWISE SPECIFIED)
 .xxx = ±.020 (.51)
 .xx = ±.03 (.8)
- PACKAGE C = 100

S41044_04

PANDUIT

CORP.

TINLEY PARK, ILLINOIS

REV	DATE	BY	CHK	DESCRIPTION	ECN	PM	CUST	DATE	CHK'D	MAT'L	SCALE	DWG. NO.	DWG. SIZE
04	1/01	KMD		ADDED NOTE 5 CAD FILE SPEC WAS N41044SA_PCD_03							FULL & NOTED	S41044	SIZE
03	11/96	JKD	JD	ADDED NOTE 4	05241	MAS	LA						
---	----	---	---	MAT'L WAS 302/304 FOR MMP350	----	---	---						
02	4/93	SM	SM	ADDED STK THK DIM	01532	GP	LA						
01	6/92	DL	DL	ADDED HOLE DIA	01092	GP	LA						
00	3/91	SM	JC	RELEASED	00378	GP	LA	2/4/91					
										STAINLESS STEEL			

STANDARD METAL MARKER PLATE

UNLESS OTHERWISE SPECIFIED,
DIMENSIONAL TOLERANCES ARE:
(.X) ± (.XXX) ±
(.XX) ± ANGLES ±

UNLESS OTHERWISE SPECIFIED,
ALL DIMENSIONS ARE GIVEN IN
INCHES, THIRD ANGLE PROJECTION

DRAWN BY SAM

DATE 2/4/91

CHK'D LM

MAT'L
STAINLESS STEEL

SCALE FULL & NOTED

DRAWING NO.

S41044

DWG.

SIZE