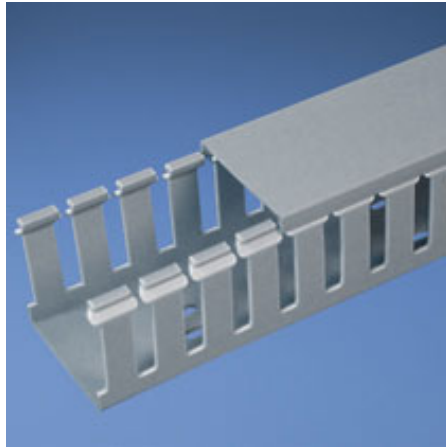




G1.5X3LG6-A

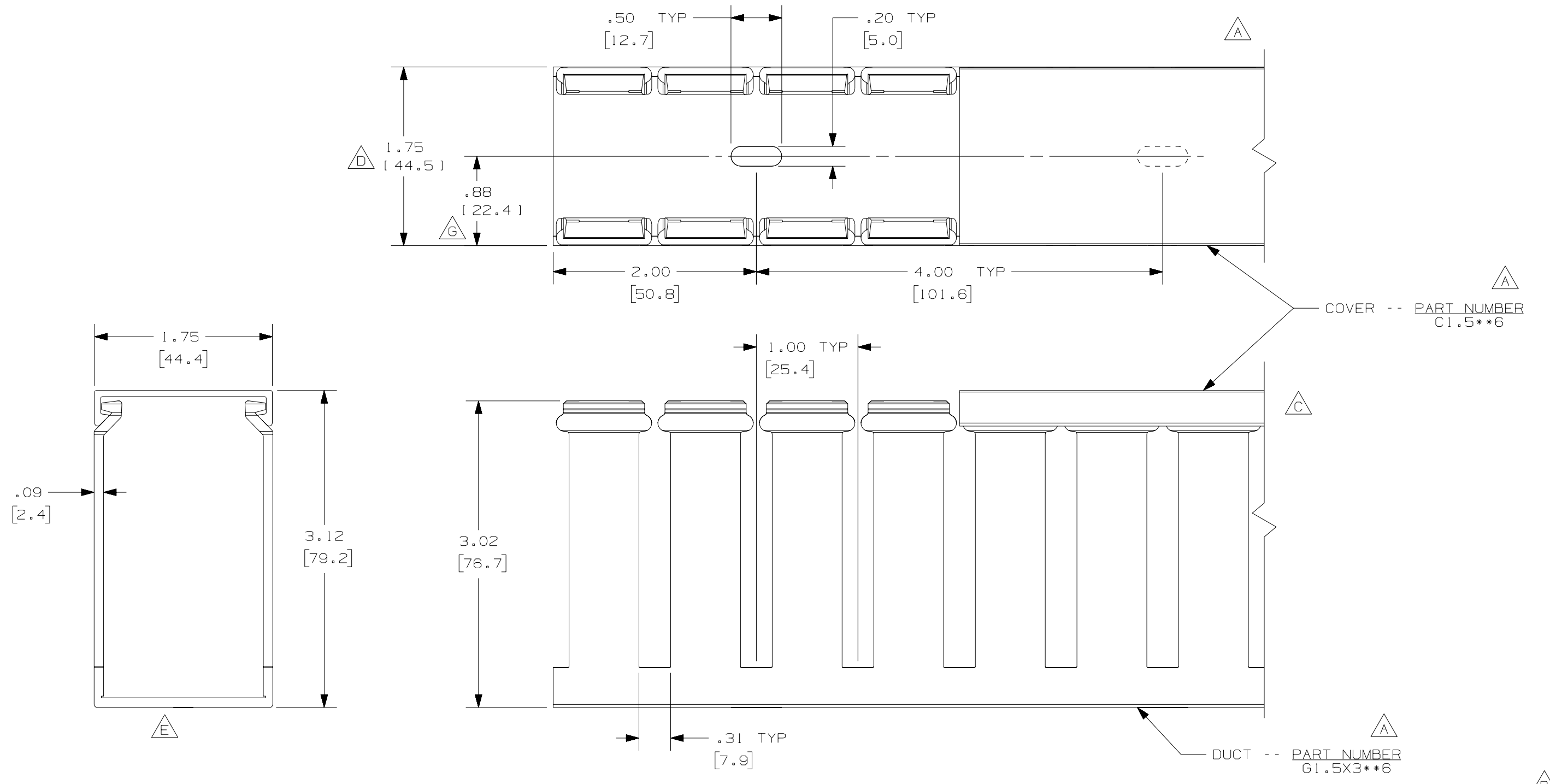


- Choose from 36 sizes of *PANDUIT*® Type G Wiring Duct from 0.5 "x 0.5" up to 6.0" x 4.0" in popular colors. Used for general purpose control panel wiring and to route and protect wiring in communication closets. The non-slip cover conceals all wiring and is easy to install. The duct and cover form a flush sidewall providing increased capacity and improved aesthetics.
- **Specifications**
 - Made of lead-free PVC
 - UL Recognized continuous use temperature: 122 °F (50°C)
 - UL94 Flammability Rating of V-0
 - Conforms with NFPA 79-2002 section 14.3.1 requirement for flame retardant material
 - Provided with mounting holes
- **Features and Benefits**
 - Wide finger/slot design provides greater sidewall rigidity and can be used with a wide range of wire bundle sizes
 - *PANDUIT*® exclusive rounded edges protects hands and wiring/cabling from abrasion
 - Non-slip cover stays in place during shipment, vibration and when in vertical orientation, eliminating rework
 - Flush cover design holds 10-12% more wires than traditional duct designs
 - Double scoreline allows quick modification for larger cabling bundles saving installation time leading to a lower installed cost
 - Specially formulated lead-free material eliminates health concerns associated with PVC that contains lead
 - Restricted slot design retains wire in slot for fast, easy wire installation or removal
- Base and cover sold separately.

■ Part Number	G1.5X3LG6-A
■ RoHS Compliancy Status	Compliant
■ Part Description	Wide finger, slotted wiring duct.
■ Material	Lead-Free PVC
■ Color	Light Gray
■ CSA Certified	Yes
■ UL Recognized (File No. E147128)	Yes
■ Length (ft.)	6
■ Adhesive Mounting Tape	Yes
■ CE Marking	Yes
■ Duct Size W x H (In.)	1.75 x 3.12
■ Duct Size W x H (mm)	44.5 x 79.2
■ Mounting Method	Standard Mounting Holes with Adhesive
■ Pricing Description	Slotted Duct, PVC, 1.5"X3"X6',ADH,LGRY
■ Slot Width (In.)	.31

▪ Slot Width (mm)	7.9
▪ Cover Part Number	C1.5LG6
▪ Min. Order UOM	FT
▪ Min. Order Qty.	6
▪ BOM Qty. (# of Pkgs.)	

THIS COPY IS PROVIDED ON A RESTRICTED BASIS AND IS NOT TO BE USED IN ANY WAY DETRIMENTAL TO THE INTERESTS OF PANDUIT CORP.



A **F**

NOTE.

1. ALL DIMENSIONS ARE REFERENCE ONLY.
2. DIMENSIONS IN PARENTHESES ARE METRIC.
3. THE ** DENOTE COLOR.
4. DUCT AND COVER ARE AVAILABLE IN 6 FT [1828.8] LENGTHS.

REV	DATE	BY	CHK	DESCRIPTION
2	7/6/07	JCST	MKBE	G. CORRECTED DIMENSION F. ADDED LENTGH NOTE
1	5/7/04	JCST	MKBE	E. DELETED DIMENSION D. ADDED DIMENSION
R	2/19/03	JCST	JGG	B. CHANGED DRAWING SIZE C. CHANGED VIEW A. ADDED TOP VIEW, LABELS, AND NOTE
				DRAWING RELEASED

CAD FILENAME/LAYERS		D11000QN_DC_00C	
PANDUIT CORP., TINLEY PARK, ILLINOIS			
WIRING DUCT - TYPE G WITH COVER 1.5 X 3 MARKETING DRAWING			
DRAWN BY JCST	MAT'L: PVC	SCALE FULL	DWG B
DATE 2/19/03		DRAWING NO. 36897-701	SIZE B
CHECKED BY JGG			