



PLUP40S-D30

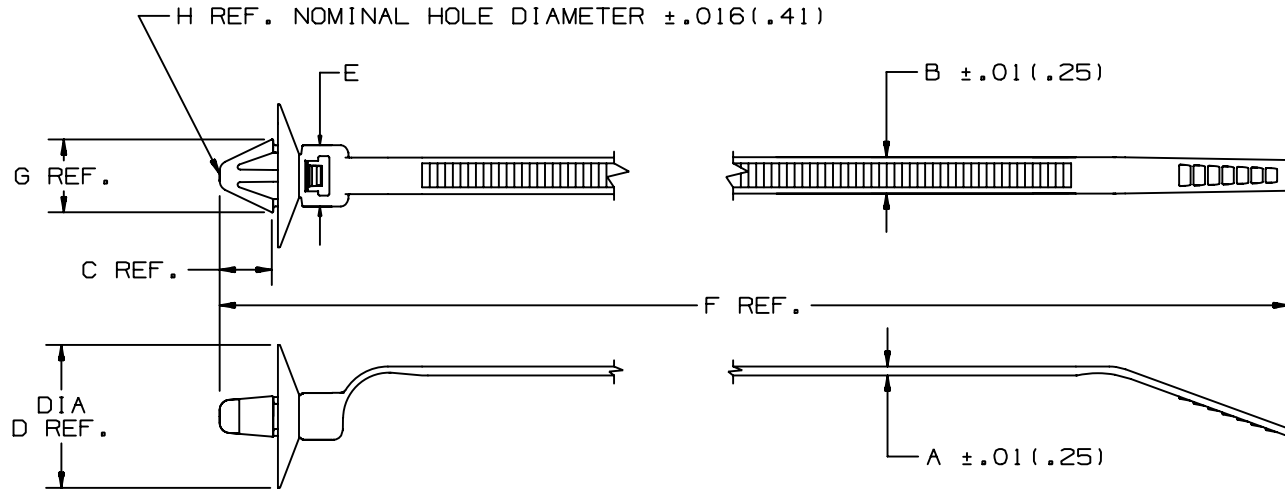


- Natural nylon material for indoor use
- Heat stabilized material for high temperature applications up to 239°F (115°C) – indoor use
- Quick, secure way to fasten to clearance holes in panel
- Anchor is easily pressed into a pre-formed hole in a light gauge metal or plastic and locks in place
- Umbrella shaped disk provides constant tension for a stable, secure and rattle-free installation
- Disk forms a dust-tight and semi-liquid tight seal to the panel surface
- PLUP40SE style is for use with Corrugated Loom Tubing
- Curved tip is easy to pick up from flat surfaces and allows faster initial threading to speed installation

| | |
|-------------------------------------|--|
| ■ Part Number | PLUP40S-D30 |
| ■ RoHS Compliancy Status | Compliant |
| ■ Part Description | Umbrella Wing Push Mount Cable Tie, 7.0", Standard cross section |
| ■ Product Type | Cable Ties |
| ■ Material | Heat Stabilized Nylon 6.6 |
| ■ Color | Black |
| ■ CSA Certified | No |
| ■ UL Listed (File #E56854) | No |
| ■ UL Recognized (File #E56854) | No |
| ■ Length (In.) | 7.0 |
| ■ Length (mm) | 177 |
| ■ Width (In.) | .190 |
| ■ Width (mm) | 4.8 |
| ■ CE Compliant | Yes |
| ■ Cross Section | Standard |
| ■ Locking Style | Locking |
| ■ Material Flammability Rating | UL 94V-2 |
| ■ Max. Bundle Diameter (In.) | 1.57 |
| ■ Max. Bundle Diameter (mm) | 40 |
| ■ Max. Continuous Use Temperature | 239°F (115°C) |
| ■ Max. Panel Thickness (In.) | .050 |
| ■ Max. Panel Thickness (mm) | 1.3 |
| ■ Min. Bundle Diameter (In.) | .197 |
| ■ Min. Bundle Diameter (mm) | 5.0 |
| ■ Min. Loop Tensile Strength (Lbs.) | 50 |
| ■ Min. Loop Tensile Strength (N) | 222 |

| | |
|-------------------------------|--|
| ■ Nominal Hole Diameter (In.) | .266 |
| ■ Nominal Hole Diameter (mm) | 6.8 |
| ■ Pricing Description | Umbrella Push Mount Tie, 7.0"L (177mm), Standard, Heat Stabilized, Black |
| ■ Thickness (In.) | .047 |
| ■ Thickness (mm) | 1.2 |
| ■ Tool | GTS, GTSL, GS2B, GTH, GS4H, PTS, PTH, PPTS, STS2, STH2 |
| ■ Min. Order UOM | PC |
| ■ Min. Order Qty. | 500 |
| ■ BOM Qty. (# of Pkgs.) | |

THIS COPY IS PROVIDED ON A RESTRICTED BASIS AND IS NOT TO BE USED IN ANY WAY DETRIMENTAL TO THE INTERESTS OF PANDUIT CORP.



| PANDUIT PART NO. | BUNDLE DIA. | | A in (mm) | B in (mm) | C in (mm) | D in (mm) | E in (mm) | F in (mm) | G in (mm) | H in (mm) | MAX. PANEL THICKNESS in (mm) | MIN. LOOP TENSILE lbs (N) | CROSS SECTION | WEIGHT 100 pcs lbs (g) |
|------------------|-----------------|-----------------|---------------|---------------|---------------|----------------|---------------|---------------|---------------|---------------|---------------------------------|------------------------------|---------------|------------------------------|
| | MIN. in (mm) | MAX. in (mm) | | | | | | | | | | | | |
| PLUP40S | .197 (5) | 1.57 (40) | .047 (1.2) | .190 (4.8) | .295 (7.5) | .744 (18.9) | .320 (8.1) | 6.97 (177) | .378 (9.6) | .266 (6.8) | .050 (1.3) | 50 (222) | STANDARD | .31 (141) |

DIMENSIONS IN PARENTHESES ARE IN METRIC UNITS

PANDUIT CORP. TINLEY PARK, ILLINOIS

PLUP40S
UMBRELLA WINGED PUSH MOUNT CABLE TIE

UNLESS OTHERWISE SPECIFIED,
DIMENSIONAL TOLERANCES ARE:
(.X) ± .1(.25) (.XXX) ± .020(.51)
(.XX) ± .02(.5) ANGLES ± ---

UNLESS OTHERWISE SPECIFIED,
ALL DIMENSIONS ARE GIVEN
IN INCHES, THIRD ANGLE PROJECTION.

| REV | DATE | BY | CHK | DESCRIPTION | ECN | R | CUST | SUP | DRAWN BY | MAT'L: | SCALE | DRAWING NO. | DWG SIZE |
|-----|----------|------|-----|--|-------|---|------|-----|------------------|--------------|-------|-------------|----------|
| 9 | 11/24/04 | ERW | | CHANGED MIN. LOOP TENSILE TO 50 (222mm). | 27066 | 9 | | | BSH | | NONE | | |
| 8 | 11/1/04 | JABC | JVL | CHANGED FORMAT FOR CONSISTENCY SEE ECN FOR DETAILS | 27066 | 8 | JVL | | DATE 11/13/96 | NYLON 6.6 | | SS-27066 | A |
| | | | | | | | | | CHK'D JML | | | | |