



## PWMS-H25-C

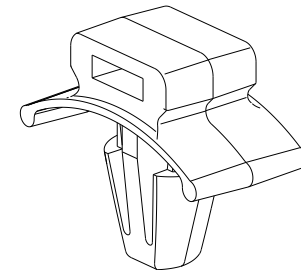
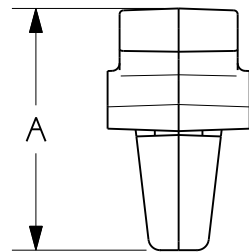
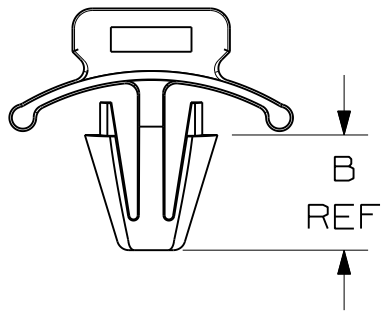
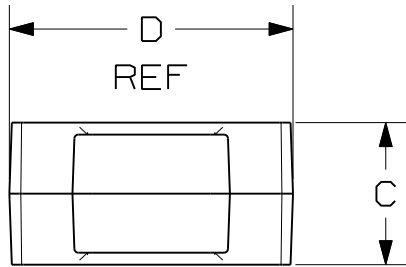


- Push mounts require no adhesive backing or additional mounting hardware. They are inserted into pre-drilled holes. The winged base applies pressure on the panel wall to provide a more secure mount in high vibration applications. Can be used where only one side of panel is accessible.
- ‡Cable Tie Cross Section Sizes: M = Miniature, I = Intermediate, S = Standard, HS = Heavy Standard, LH = Light-Heavy, H = Heavy, HLM = Miniature *Tak-Ty*® Hook & Loop Ties.

■ Part Number	PWMS-H25-C
■ RoHS Compliancy Status	Compliant
■ Part Description	Winged Push Barb Cable Tie Mount
■ Material	Nylon 6.6
■ Color	Natural
■ UL Recognized	E136577
■ Height (In.)	.61
■ Height (mm)	15.5
■ Length (In.)	.75
■ Length (mm)	19.1
■ Width (In.)	.37
■ Width (mm)	9.4
■ CE Compliant	CT-ACC4 / 10.96
■ Environment	Indoors
■ Flammability Rating	UL94 V-2
■ Max. Panel Thickness (In.)	.11
■ Max. Panel Thickness (mm)	2.7
■ Mounting Method	Push Barb
■ Panel Hole Diameter (In.)	.25
■ Panel Hole Diameter (mm)	6.5
■ Pricing Description	Cable Tie Mount, Winged Push Mount, NAT
■ Thickness (In.)	.23
■ Thickness (mm)	5.8
■ Used With Cable Ties	M, I, S
■ Min. Order UOM	PC
■ Min. Order Qty.	100


THIS COPY IS PROVIDED ON A RESTRICTED BASIS AND IS NOT TO BE USED IN ANY WAY DETRIMENTAL TO THE INTERESTS OF PANDUIT CORP.

PANDUIT PART NO.	USE WITH THESE CABLE TIE CROSS-SECTIONS	DIMENSIONS				WEIGHT lbs/100pcs (g)
		A	B	C	D	
PWMS-H25	MINIATURE INTERMEDIATE STANDARD	.62 (15.7)	.31 (8.0) REF	.37 (9.3)	.71 (18.0) REF	0.13 (60)



NOTES:

- SEE CURRENT PRICE SHEET FOR PART NUMBER SUFFIX DESIGNATION FOR PACKAGE SIZE, AND COLOR.
- (\* ) DIMENSIONAL VARIANCE IS POSSIBLE DUE TO MOLDING PROCESS RELATED SINK MARKS.
- APPLICATION SPECIFICATION:  
HOLE DIAMETER: .229 (5.8) - .255 (6.5)  
PANEL THICKNESS: .105 (2.7) (MAX)

DIMENSIONS IN BRACKETS ARE METRIC [ mm ]	
CAD FILENAME/LAYERS	G00239EW_PB_PWMSH25_06
 <span style="float: right;">TINLEY PARK, ILLINOIS</span>	
PUSH WING MOUNT PWMS-H25	
UNLESS OTHERWISE SPECIFIED, DIMENSIONAL TOLERANCES ARE: (.X) ±0.05 (1.3) (.XXX) ±0.010 (0.25) (.XX) ±0.02 (0.5) ANGLES ±5°	
UNLESS OTHERWISE SPECIFIED, ALL DIMENSIONS ARE GIVEN IN INCHES, THIRD ANGLE PROJECTION.	
DRAWN BY <b>CGSM</b>	MAT'L: <b>NYLON 6/6</b>
DATE <b>3-6-97</b>	SCALE <b>2:1</b>
CHK'D	DRAWING NO. <b>G00239EW</b>
ECN - R	DWG <b>A</b> SIZE

REV	DATE	BY	CHK	DESCRIPTION	ECN	R	CUST	SUP
6	5/22/08	DJSM		TABULARIZED DIMENSIONS, REMOVED WINDOW DIMENSIONS, REVISED DIMENSION VALUES	GB0239EW	6		
R	3-6-97	CGSM		INITIAL RELEASE	GB0239EW	R		