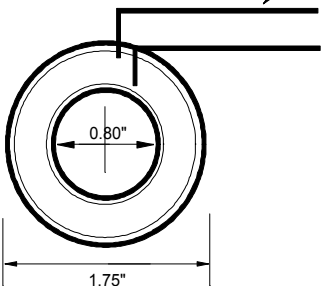


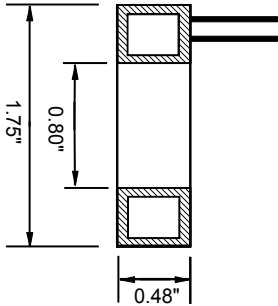
# 1000:1 Current Transformer



LEAD LENGTH 18" STANDARD  
 1/4" FEMALE FASTON INSULLATED  
 TERMINATIONS STANDARD



FACE VIEW



SECTIONAL VIEW

Current Range: 100 Amps  
 Output Ratio to Input: 1000:1 (100maAC Max)  
 Frequency Range: 45-60HZ  
 Dielectric Withstand: 1000VAC (RMS)  
 Insulation resistance Class: .5KV

Primary Current	10A (RMS)	20A (RMS)	50A (RMS)	100A (RMS)
Secondary Output with 10 Ω Load	0.1V (RMS)	0.2V (RMS)	0.5V (RMS)	1.0V (RMS)

Fully Encapsulated  
 Signal Leads: Standard Length; 18"  
 Wire Size 18GA. 300VAC; Optional 600VAC  
 Operating Temperature -40C to 80C  
 Accuracy: ± 1% @ 50-60HZ