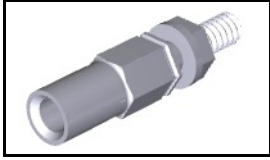


## 200875-7 Product Details

[Share](#) [Print](#) [Email](#)



**200875-7**

TE Internal Number: 200875-7

 **Active**

 [View 3D PDF](#)

### M Series Connectors

 **Always EU RoHS/ELV Compliant**  
(Statement of Compliance)

### Product Highlights:

- Product Series = M Series
- Hardware
- Hardware Type = Jackscrew Kit
- Jackscrew Type = Fixed
- Thread Size = 4-40, 6-32 [M3.5 x 0.6]  
Double Thread, Double Lead

[View all Features](#)

### Quick Links

- ▶ [Pricing & Availability](#)
- ▶ [Search for Tooling](#)
- ▶ [Product Feature Selector](#)
- ▶ [Contact Us About This Product](#)

[Add to My Part List](#)

[Request Sample](#)

[Find Similar Products](#)

[Buy Product](#)

### Documentation & Additional Information

#### Product Drawings:

- [JACKSCREW KIT, UNASSEMBLED, FIXED, M SERIES](#) (PDF, English)

#### Catalog Pages/Data Sheets:

- [M\\_SERIES\\_PIN\\_AND\\_SOCKET\\_CONNECTORS](#) (PDF, English)

#### Product Specifications:

- None Available

#### Application Specifications:

- None Available

#### Instruction Sheets:

- None Available

#### CAD Files: (CAD Format & Compression Information)

- [2D Drawing](#) (DXF, Version AD)
- [3D Model](#) (IGES, Version AD)
- [3D Model](#) (STEP, Version AD)

[List all Documents](#)

#### Additional Information:

- [Product Line Information](#)

#### Related Products:

- [Tooling](#)

### Product Features (Please use the Product Drawing for all design activity)

#### Product Type Features:

- Product Series = M Series
- [Product Type](#) = Hardware
- [Jackscrew Type](#) = Fixed
- Thread Size = 4-40, 6-32 [M3.5 x 0.6] Double Thread, Double Lead
- Strain Relief = Without
- Sealed = No

#### Mechanical Attachment:

- Hardware Type = Jackscrew Kit
- [Mounting Hardware](#) = Nuts and Lockwashers

#### Dimensions:

- Length (X-Axis) (mm [in]) = 21.51 [0.847]
- Width (Z-Axis) (mm [in]) = 5.60 [0.220]
- Profile Height (Y-Axis) (mm [in]) = 5.60 [0.220]

#### Housing Features:

- Mating Alignment = Without

#### Industry Standards:

- [RoHS/ELV Compliance](#) = RoHS compliant, ELV compliant
- [Lead Free Solder Processes](#) = Not relevant for lead free process
- RoHS/ELV Compliance History = Always was RoHS compliant

#### Conditions for Usage:

- For Use With = Mate with Any Turnable Jackscrew Rod

#### Packaging Features:

- Packaging Method = Bag
- Packaging Quantity = 100

**Body Features:**

- Thread Lead Type = Double
- Mating Retention = Without
- Jackscrew Material = Stainless Steel
- Jackscrew Plating = Zinc

**Other:**

- Brand = AMP
- Comment = Two required.

**Corporate Information**

[About TE](#)  
[Investors](#)  
[News Room](#)  
[Supplier Portal](#)  
[Careers](#)  
[Terms & Conditions](#)  
[Privacy Policy](#)

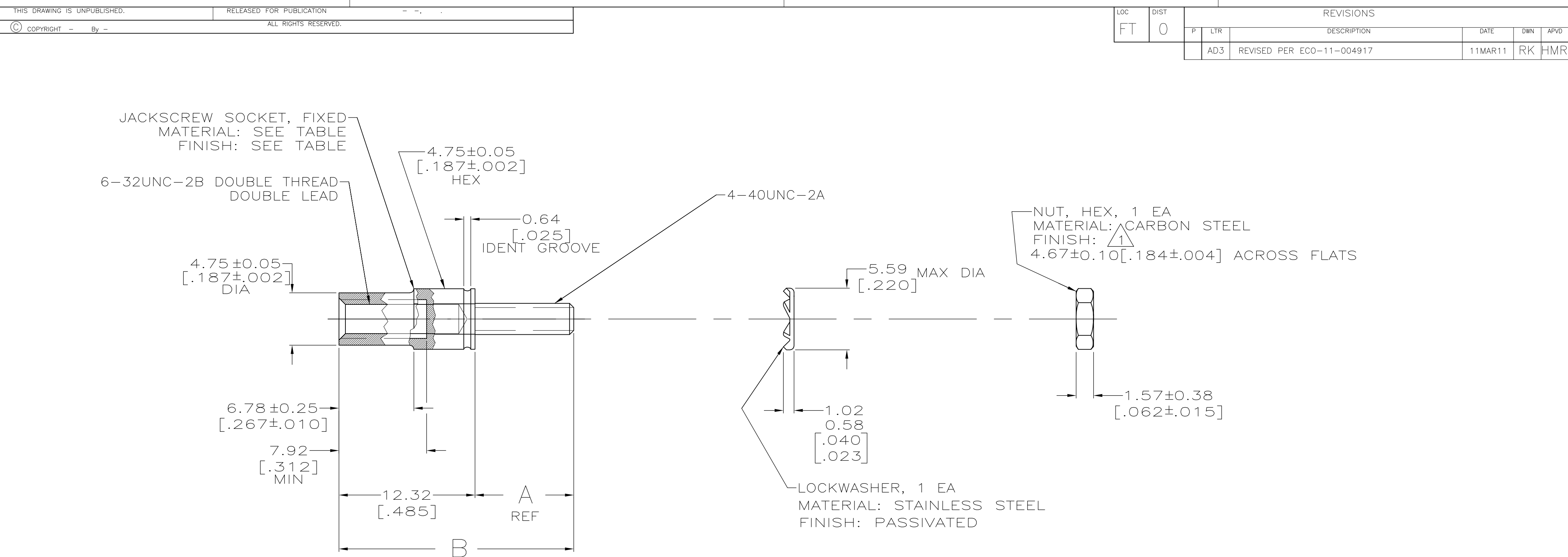
**Quick Links**

[Distributor Inventory](#)  
[Product Cross Reference](#)  
[Documents & Drawings](#)  
[Product Compliance Support Center](#)  
[Site Map](#)

**Customer Support**

[Email or Chat With Us](#)  
[Find a Phone Number](#)  
[Knowledge Base](#)  
[Manage Your Account](#)

**Keep Me Informed**



		24.43 [.962]	12.06 [.475]	-	STAINLESS STEEL	200875-8
		21.13-21.51 [.832-.847]	8.89 [.350]	-	STAINLESS STEEL	200875-7
2	SUPERSEDED	24.43 [.962]	12.06 [.475]	-	STAINLESS STEEL	200875-3
	SUPERCEDED TO 200875-1	21.13-21.51 [.832-.847]	8.89 [.350]	ZINC PLATED	CARBON STEEL	200875-2
	SUPERCEDED TO 200875-7	21.13-21.51 [.832-.847]	8.89 [.350]	-	STAINLESS STEEL	200875-1
		B	A	JACKSCREW SOCKET FINISH	JACKSCREW SOCKET MATERIAL	PART NUMBER

- 1 ZINC PLATE
- 2 OBSOLETE PARTS: OBSOLETE CIS STREAMLINING PER D.RENAUD/D.SINISI

THIS DRAWING IS A CONTROLLED DOCUMENT.

DIMENSIONS:  
mm [INCHES]

MATERIAL  
SEE CALLOUT

TOLERANCES UNLESS OTHERWISE SPECIFIED:

0 PLC	± -
1 PLC	± -
2 PLC	± 0.13 [.005]
3 PLC	± -
4 PLC	± -
ANGLES	± -
FINISH	SEE CALLOUT

DWN  
K.FOLTZ  
05/25/94

CHK  
R.STONE  
06/16/94

APVD  
-

PRODUCT SPEC  
-

APPLICATION SPEC  
-

WEIGHT  
-

CUSTOMER DRAWING

TE Connectivity

JACKSCREW KIT, UNASSEMBLED, FIXED, M SERIES

SIZE  
A2

CAGE CODE  
00779

DRAWING NO  
C=200875

RESTRICTED TO  
-

SCALE  
4:1

SHEET  
1 OF 1

REV  
AD3

1471-9 (3/11)