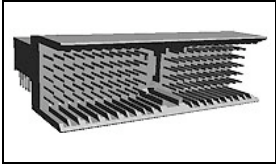


352131-1 Product Details



352131-1

TE Internal Number: 352131-1



Active

2mm Hard Metric PCB Mount Connectors (Z-PACK 2mm HM)

[Not EU RoHS or ELV Compliant \(Find RoHS Compliant Alternates\)](#)

Product Highlights:

- Connector
- Connector Assembly
- Connector Style = Plug
- Type = Type B, 22 Column
- Interface Type = 2mm HM

Documentation & Additional Information

Product Drawings:

- [Z-PACK 2MM HM TYPE B22 110 POS. RIGHT ANGLE MALE CON...](#) (PDF, English)

Catalog Pages/Data Sheets:

- None Available

Product Specifications:

- None Available

Application Specifications:

- None Available

Instruction Sheets:

- None Available

CAD Files: (CAD Format & Compression Information)

- [2D Drawing](#) (DXF, Version A)
- [3D Model](#) (IGES, Version A)
- [3D Model](#) (STEP, Version A)

Additional Information:

- [Product Line Information](#)

Related Products:

- [Tooling](#)
- [Mating Products \(1\)](#)

Product Features (Please use the Product Drawing for all design activity)

Product Type Features:

- Product Type = Connector
- Connector Type = Connector Assembly
- [PCB Mounting Orientation](#) = Right Angle

Mechanical Attachment:

- [Board Mount](#) = Free Board
- Front Mating Level = Level 1

Electrical Characteristics:

- [Shielded](#) = No

Termination Features:

- [Interface Type](#) = 2mm HM
- Termination End Plating = Tin-Lead over Nickel

Dimensions:

- Module Length (mm [in]) = 44.00 [1.732]

Body Features:

- Type = Type B, 22 Column

Contact Features:

- Contact Configuration = ACTION PIN Post, Signal
- [Feedthrough Post Length](#) (mm [in]) = 3.30 [0.130]
- [CompactPCI](#) = No
- [Contact Plating, Mating Area, Material](#) = Performance-Based
- [Grounding Contact](#) = Without
- Contact Base Material = Phosphor Bronze

Housing Features:

- Connector Style = Plug
- [Mating Alignment](#) = Without
- Housing Color = Gray
- Housing Material = Polyester GF
- UL Flammability Rating = UL 94V-0

Configuration Features:

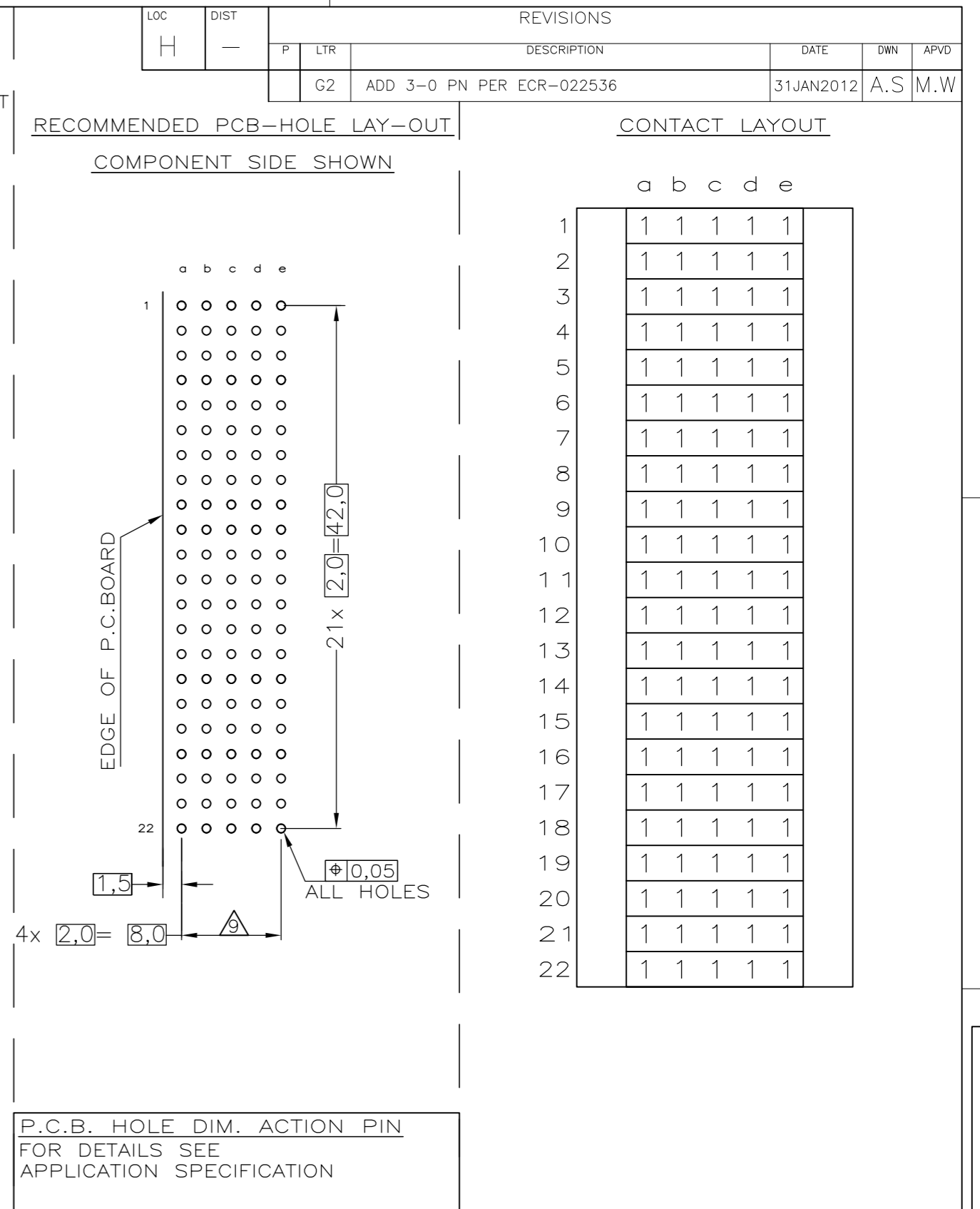
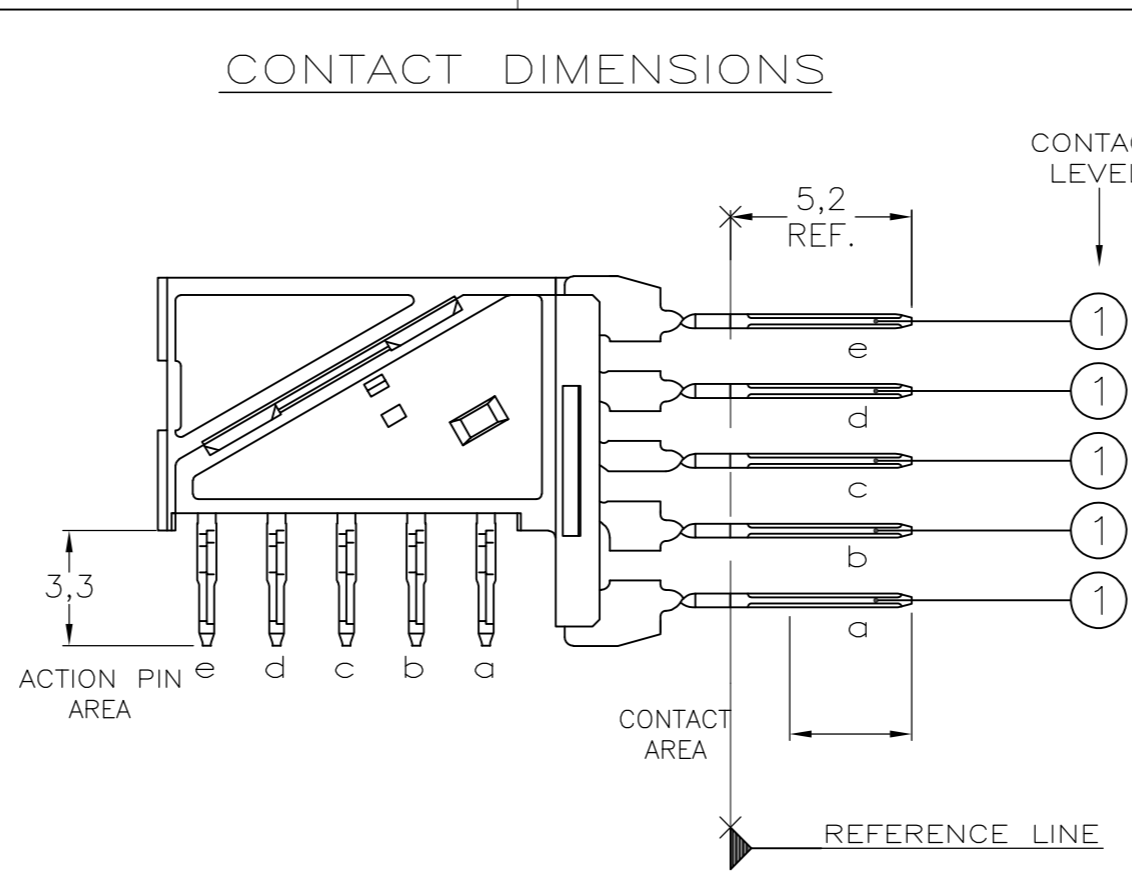
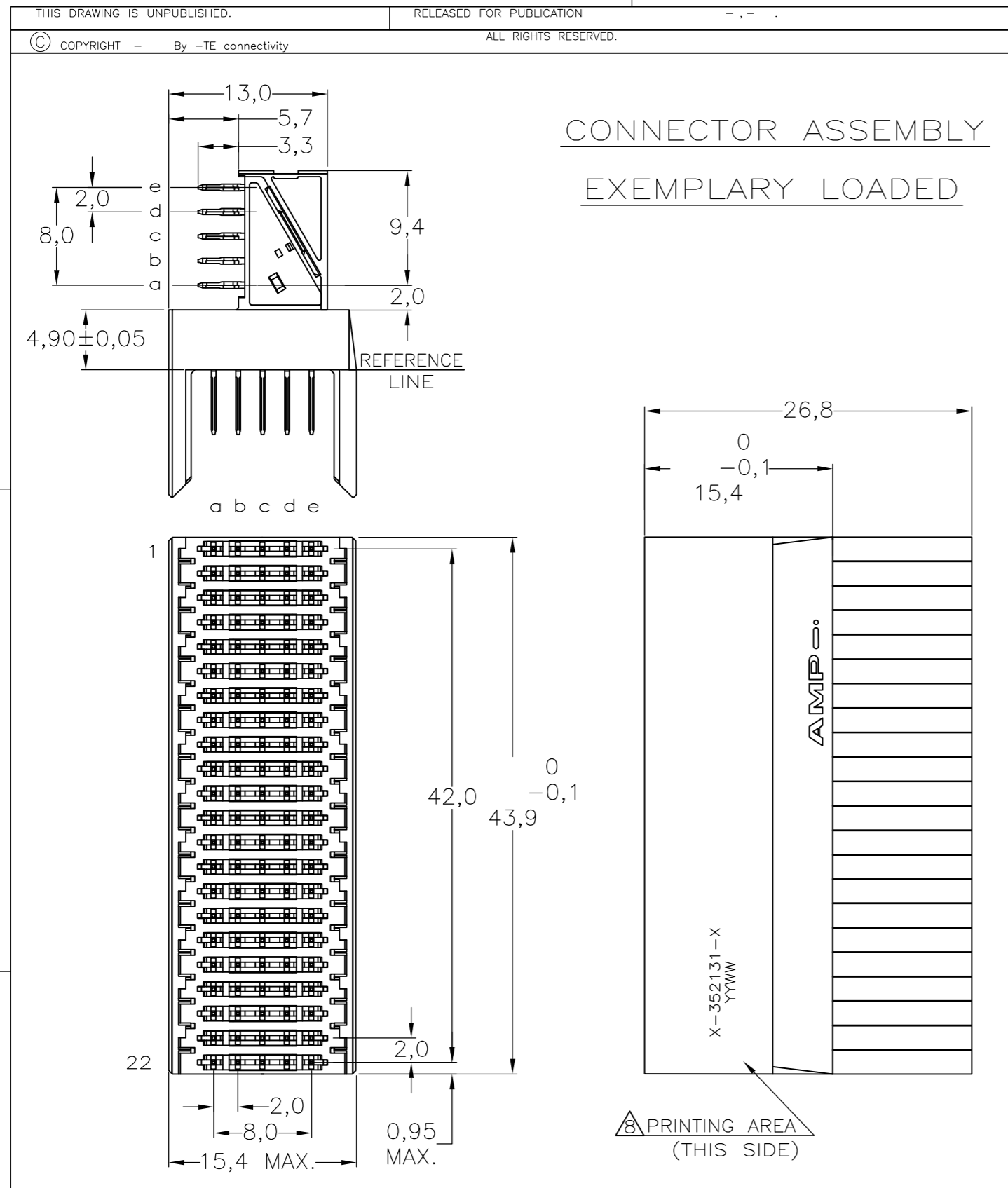
- [Number of Rows](#) = 5
- [Number of Positions](#) = 110
- [Crosstalk Version](#) = Standard

Industry Standards:

- [RoHS/ELV Compliance](#) = Not ELV/RoHS compliant
- [Lead Free Solder Processes](#) = Not relevant for lead free process

Other:

- Brand = AMP
- Comment = Warning: Card extender male connectors should not be used with cable connectors.



NOTES:

1 MATERIAL HOUSING: GREY GLASSFILLED POLYESTER
UL 94 V-0
CONTACT: PHOSPHOR BRONZE

2 GENERAL PLATING SPECIFICATION: UNDERPLATING (ENTIRE CONTACT): 1,27µm NICKEL MIN.
AND ACTION PIN: 0,5µm TIN-LEAD MIN.
FOR PLATING OF MATING SURFACES SEE APPLICABLE SPECIFICATION REFERENCE FOR EACH DASH NUMBER.

3 CONFORMS TO ALL TESTING ACCORDING IEC 61076-4-101 PERFORMANCE LEVEL 2.

4 CONFORMS TO ALL TESTING ACCORDING IEC 61076-4-101 PERFORMANCE LEVEL 1.

5 CONNECTOR TESTED AND QUALIFIED AGAINST TELCORDIA GR-1217-CORE QUALITY LEVEL III, CENTRAL OFFICE APPLICATIONS.

6 CONNECTOR TESTED AND QUALIFIED AGAINST TELCORDIA GR-1217-CORE QUALITY LEVEL III, UNCONTROLLED ENVIRONMENT APPLICATIONS.

7 CONNECTOR LUBRICATED WITH TELCORDIA GR-1217-CORE APPROVED LUBRICANT.

8 CONNECTOR MARKED WITH PARTNUMBER AND DATECODE

9 PLATED-THROUGH HOLES AT 2x2mm SQUARE GRID.

10 OBSOLETE PARTS: OBSOLETE CIS STREAMLINING PER D.RENAUD/D.SINISI

11 0.76µm MIN GOLD PLATING AT MATING AREA.

THIS DRAWING IS A CONTROLLED DOCUMENT.		DWN: L.v.d.HEIJDEN 15DEC97	TE Connectivity	
DIMENSIONS: mm		CHK: D. TRUREN 15DEC97	Z-PACK 2MM HM TYPE B22 110 POS. RIGHT ANGLE MALE CONNECTOR ASSEMBLY	
TOLERANCES UNLESS OTHERWISE SPECIFIED:		APVD: F.v.KONINGSBRUGGE	SIZE: A2	CAGE CODE: 00779
0 PLC	± -	PRODUCT SPEC	DRAWING NO: C-352131	RESTRICTED TO: -
1 PLC	± -	APPLICATION SPEC	SCALE: NTS	SHEET: 1 of 1
2 PLC	± -	WEIGHT: -	REV: G2	
3 PLC	± -	CUSTOMER DRAWING		
4 PLC	± -			
ANGLES	± -			
FINISH	-			