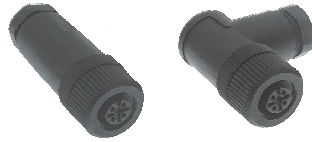


## 4, 5, 8 and 12-Pin Field Wireable Connectors, Standard and Reverse Key

- IEC IP67 Protection



Housing Style	Female Part Number	Male Part Number	Features	Pinout
<p><b>B 81..</b></p>		<b>BS 8157-0/PG 9</b>	PBT, Black, PG 9 cable gland accepts 6-8 mm cable diameter , spring clamp accepts up to 20 AWG conductors, 85°C, 125 V, 4 A, Mates with standard key 5-pin cordsets and receptacles, spring clamp	<p><b>Male</b></p>
	<b>BWS 8141-0</b>	<b>BSWS 8141-0</b> <b>BSWS 8241-0</b>	PBT, Black, PG 9 cable gland accepts 6-8 mm cable diameter, screw terminals accepts up to 18 AWG conductors, 85°C, 250 V, 4 A, mates with <u>reverse</u> key 4-pin cordsets and receptacles	<p><b>Female</b></p> <p><b>Male</b></p>
<p><b>B 82..</b></p>	<b>BWS 8151-0</b> <b>BWS 8251-0</b>	<b>BSWS 8151-0</b> <b>BSWS 8251-0</b>	PBT, Black, PG 9 cable gland accepts 6-8 mm cable diameter , screw terminals accepts up to 18 AWG conductors, 85°C, 60 V, 4 A, mates with <u>reverse</u> key 5-pin cordsets and receptacles	<p><b>Female</b></p> <p><b>Male</b></p>
<p><b>BS 81..</b></p>	<b>B 8181-0</b> <b>B 8281-0</b>	<b>BS 8181-0</b> <b>BS 8281-0</b>	Nylon, Black, PG 9 cable gland accepts 6-8 mm cable diameter , screw terminals accepts up to 18 AWG conductors, 85°C, 30 VAC/75 VDC, 2 A, mates with standard key 8-pin cordsets and receptacles	<p><b>Female</b></p> <p><b>Male</b></p>
<p><b>BS 82..</b></p>	<b>B 81121-0/PG 9</b>	<b>BS 81121-0/PG 9</b>	Nylon, Black, PG 9 cable gland accepts 4-8 mm cable diameter , screw terminals accepts up to 24 AWG conductors, 85°C, 30 V, 1 A, mates with standard key 12-pin cordsets and receptacles	<p><b>Female</b></p> <p><b>Male</b></p>