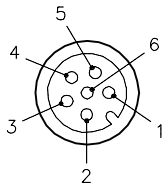
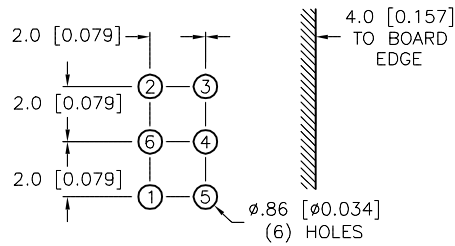


FEMALE END VIEW

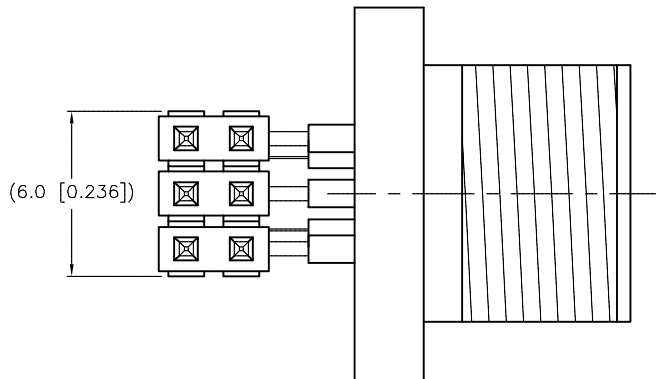
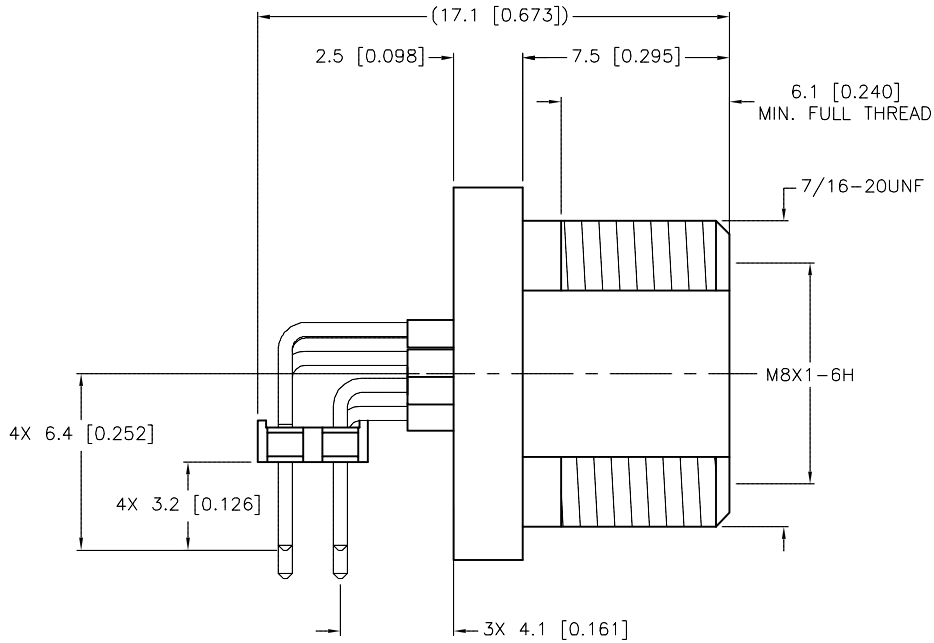


PIN-OUT DIAGRAM



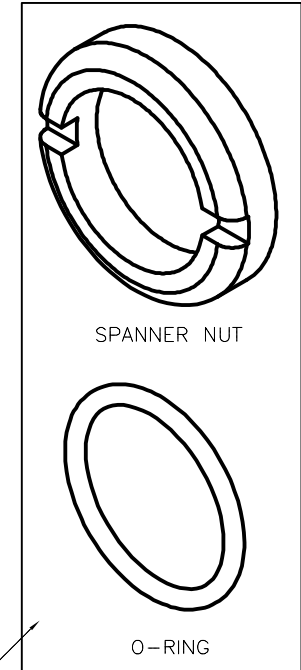
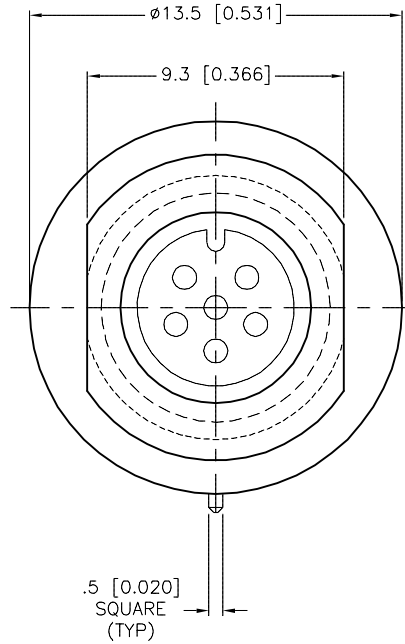
SPECIFICATIONS

CONTACT CARRIER MATERIAL	TPU
CONTACT MATERIAL/PLATING	BRASS/GOLD
HOUSING MATERIAL/PLATING	BRASS/NICKEL
NUMBER OF CONTACTS	6 x 0.025 IN SQ. POSTS
RATED CURRENT [A]	1.0 A
RATED VOLTAGE [V]	24 VDC
TEMPERATURE RANGE	-30°C to +80°C (-22°F to +176°F)
PROTECTION CLASS	MEETS NEMA 1,3,4,6P AND IEC IP67



NOTES:

1. "/S1091" DESIGNATES ORING AND LOCKNUT TO BE PACKAGED LOOSE IN BAG WITH RECEPTACLE.



SEE NOTE 1

SOURCE DRAWING - FOR REFERENCE ONLY

RELATED DOCUMENTS 1. 2. 3. 4.	3RD ANGLE PROJECTION 	THIS DRAWING IS CONFIDENTIAL AND THE PROPERTY OF TURCK INC. USE OF THIS DOCUMENT WITHOUT WRITTEN PERMISSION IS PROHIBITED.		3000 CAMPUS DRIVE MINNEAPOLIS, MN 55441 1-800-544-7769 (763) 553-7300 (763) 553-0708 fax turck.com	
	MATERIAL	DRFT RDS	DATE 02/06/08	DESCRIPTION WMFK 6F-PCB/S1091	
FINISH	ALL DIMENSIONS DISPLAYED ON THIS DRAWING ARE FOR REFERENCE ONLY CONTACT TURCK FOR MORE INFORMATION	APVD	SCALE 4=1	IDENTIFICATION NO. U2-02902	
		UNIT OF MEASUREMENT MILLIMETER [INCH]		REV B	
DO NOT SCALE THIS DRAWING		FILE: U2-02902		SHEET 1 OF 1	

B	UPDATE TO TPU CONTACT CARRIER	RDS	06/01/15	49046
REV	DESCRIPTION	BY	DATE	ECO NO.