



**multibox® eurofast® Low Profile Junction Boxes**

- Dual Output per Port
- Rugged Plastic Housing
- Available with or without LEDs
- M23 Quick Disconnect Integral Home Run Cable
- Threaded M12 Connection

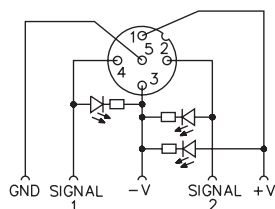
**8-port, 2 Signals Per Port, 10-48 VDC**

Application	Specifications	Pinout		No LEDs	PNP LED	NPN LED		
8-port J-box 2 signals per port Integral cable	2 A/port, 10 A total Yellow PVC cable 3x18 AWG, 16x22 AWG, foil shield and 20 AWG drain	<u>Function</u> +V - V Ground Port 1, Sig 1 Port 1, Sig 2 Port 2, Sig 1 Port 2, Sig 2 Port 3, Sig 1 Port 3, Sig 2	<u>Color</u> BN BU GN / YE WH GY / PK GN RD / BU YE WH / GN	<u>Function</u> Port 4, Sig 1 Port 4, Sig 2 Port 5, Sig 1 Port 5, Sig 2 Port 6, Sig 1 Port 6, Sig 2 Port 7, Sig 1 Port 7, Sig 2 Port 8, Sig 1 Port 8, Sig 2	<u>Color</u> GY BN / GN PK WH / YE RD YE / BN BK WH / GY VT GY / BN	8MB12Z-5-*	8MB12Z-5P3-*	8MB12Z-5N3-*
8-port J-box 2 signals per port <b>multifast</b> connector	2 A/port, 10 A total 19-pin <b>multifast</b> connector 19 conductors Mates with CKM 19-19-*	<u>Function</u> +V - V Ground Port 1, Sig 1 Port 1, Sig 2 Port 2, Sig 1 Port 2, Sig 2 Port 3, Sig 1 Port 3, Sig 2	<u>Pin / Color</u> 19 / BN 6 / BU 12 / GN / YE 15 / WH 7 / GY / PK 5 / GN 4 / RD / BU 16 / YE 8 / WH / GN	<u>Function</u> Port 4, Sig 1 Port 4, Sig 2 Port 5, Sig 1 Port 5, Sig 2 Port 6, Sig 1 Port 6, Sig 2 Port 7, Sig 1 Port 7, Sig 2 Port 8, Sig 1 Port 8, Sig 2	<u>Pin / Color</u> 3 / GY 14 / BN / GN 17 / PK 9 / WH / YE 2 / RD 13 / YE / BN 11 / BK 10 / WH / GY 1 / VT 18 / GY / BN	8MB12Z-5-CS19	8MB12Z-5P3-CS19	8MB12Z-5N3-CS19
8-port J-box 2 signals per port <b>multifast</b> , side exit connector	2 A/port, 10 A total 19-pin <b>multifast</b> connector 19 conductors Mates with CKM 19-19-*	<u>Function</u> +V - V Ground Port 1, Sig 1 Port 1, Sig 2 Port 2, Sig 1 Port 2, Sig 2 Port 3, Sig 1 Port 3, Sig 2	<u>Pin / Color</u> 19 / BN 6 / BU 12 / GN / YE 15 / WH 7 / GY / PK 5 / GN 4 / RD / BU 16 / YE 8 / WH / GN	<u>Function</u> Port 4, Sig 1 Port 4, Sig 2 Port 5, Sig 1 Port 5, Sig 2 Port 6, Sig 1 Port 6, Sig 2 Port 7, Sig 1 Port 7, Sig 2 Port 8, Sig 1 Port 8, Sig 2	<u>Pin / Color</u> 3 / GY 14 / BN / GN 17 / PK 9 / WH / YE 2 / RD 13 / YE / BN 11 / BK 10 / WH / GY 1 / VT 18 / GY / BN	8MB12Z-5-CS19H	8MB12Z-5P3-CS19H	8MB12Z-5N3-CS19H

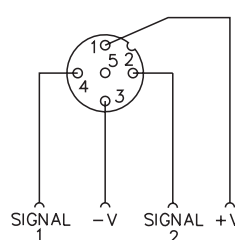
\* Cable length in meters.

**Functional Wiring Diagrams**

**(PNP LED Version)  
2 Signals Per Port**



**(No LED Version)  
2 Signals Per Port**

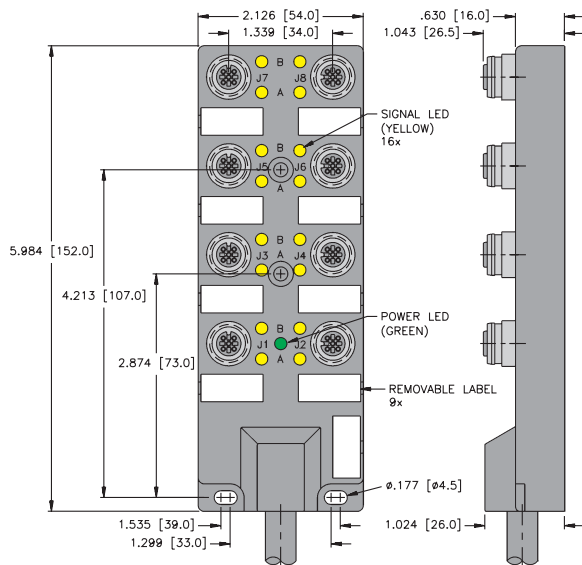


## Specifications

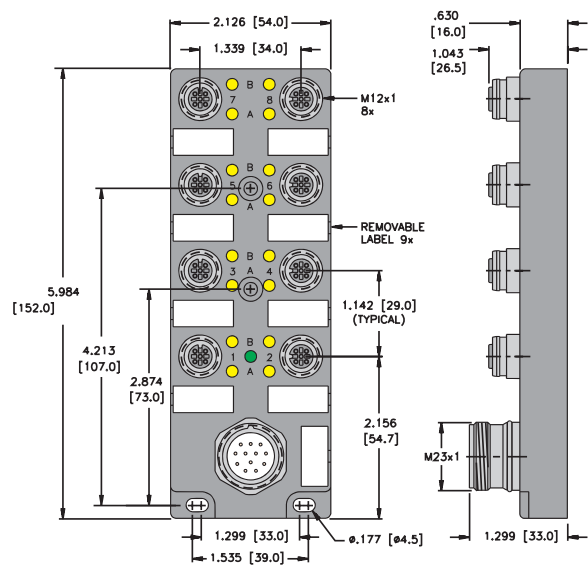
- Housing:** Nylon.
- Connectors:** **eurofast**<sup>®</sup>: Nylon or PUR, spacings to VDE 0110 Group C.
- Contacts:** Gold plated brass.
- Thread Inserts:** Nickel plated brass.
- Cable:** See table.
- LED Current:** 10 mA maximum at 48 VDC supply voltage (per LED).
- Temperature:** -30°C to +80°C (-22°F to +176°F)
- Protection:** NEMA 1, 3, 4, 6P and IEC IP 67.
- Accessories:** (2) VZ 3 closure caps and a VZ 12 label kit (9 labels), included.
- Cable Length:** Standard length is nominal 5 meters. Other lengths available by request - Consult factory.
- Recommended Splitter:** YB2-FSM 4.5-2FKM 4.5.

## Dimensions

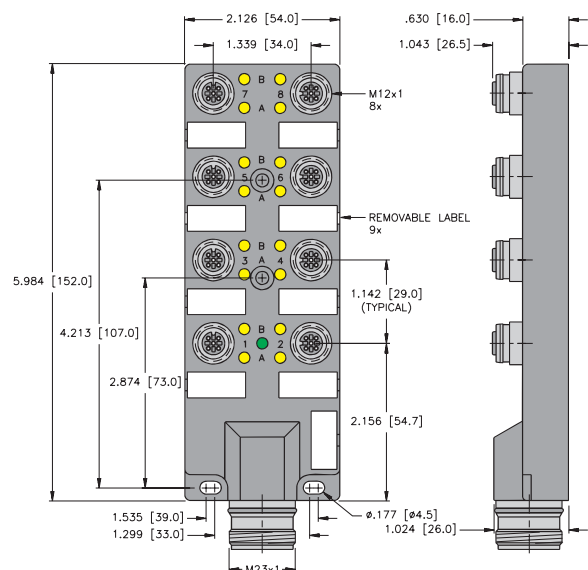
8-Port with Integral Home Run Cable



8-Port Quick Disconnect



8-Port Side Connector



### Pinout

Female	Male
<b>5-Pin eurofast</b>	<b>19-Pin multifastr</b>