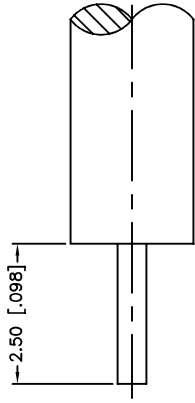
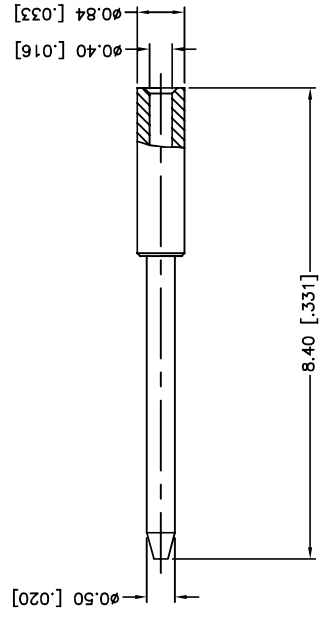
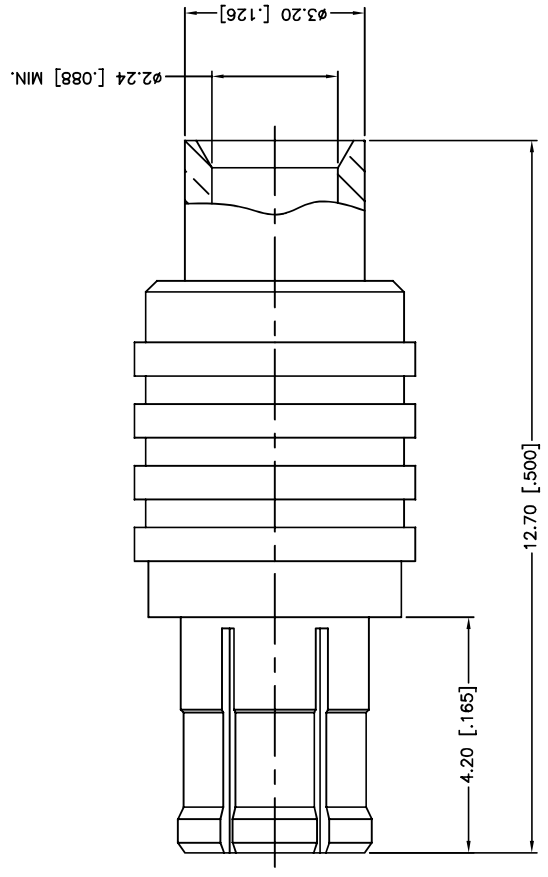


| REV. | DATE | ECR NO. | DESCRIPTION |
|------|----------|---------|----------------------------------|
| A | 01/30/04 | XXXXXX | UPDATE DRAWING FORMAT |
| B | 05/03/11 | 2171 | CHANGE THE PART NO. TO 252107-75 |



RECOMMENDED
CABLE STRIPPING DIM'S



1. CONTACT PIN TO SOLDER

| | | | | | |
|--|-------------|---|--|-------|-----|
| <p>UNLESS OTHERWISE SPECIFIED DIMENSIONS ARE IN MILLIMETERS DIMENSIONS IN [] ARE IN INCHES AND FOR CUSTOMER REFERENCE ONLY.</p> <p>UNLESS OTHERWISE SPECIFIED TOLERANCES FOR MILLIMETERS ARE:</p> <p>0.5 - 8mm ± 0.20mm 8 - 30mm ± 0.40mm 30 - 120mm ± 0.50mm</p> <p>UNLESS OTHERWISE SPECIFIED TOLERANCES FOR INCHES ARE:</p> <p>0.20 - .315 = ± 0.007" .315 - 1.180 = ± 0.015" 1.180 - 4.724 = ± 0.020"</p> | | <p>APPROVALS</p> <p>DRAWN M.ZHANG</p> <p>CHECKED</p> <p>ISSUED</p> <p>SHEET 1 OF 1</p> <p>DATE 05/03/11</p> | <p>PART DESCRIPTION</p> <p>MCX DIRECT SOLDER PLUG (FOR .085", .086" CABLE)</p> <p>PART NO. 252107-75</p> | | |
| 3 | CONTACT PIN | BRASS | GOLD | 1 | QTY |
| 2 | INSULATOR | PTFE | NATURAL | 1 | QTY |
| 1 | BODY | BER. COPPER | GOLD | 1 | QTY |
| DESCRIPTION | | MATERIAL | FINISH | QTY | |
| <p>DO NOT SCALE DRAWING</p> <p>OLD FILE C:/CONNEX/252107-75.DWG</p> | | | | | |
| DWG. NO. 252107-75.DWG | | REV. B | SIZE A | SCALE | NA |

Amphenol Connex