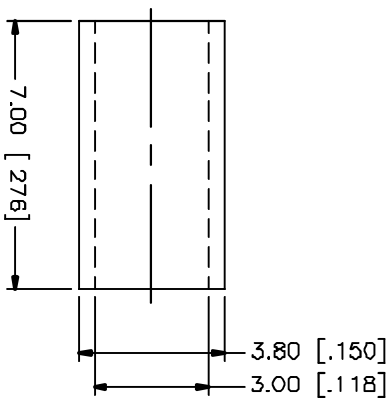
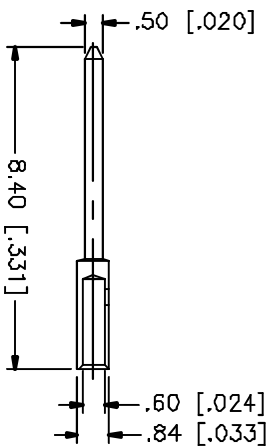
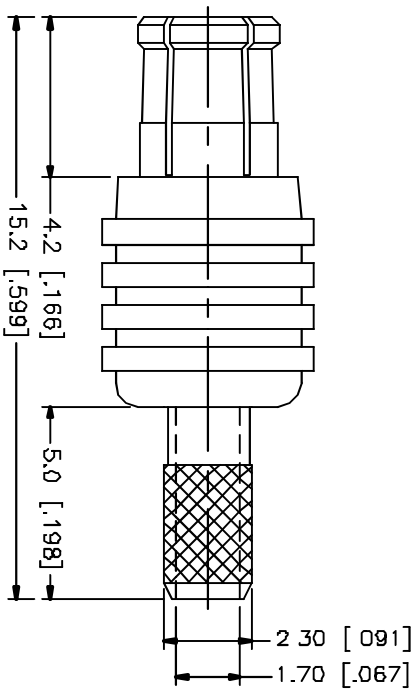
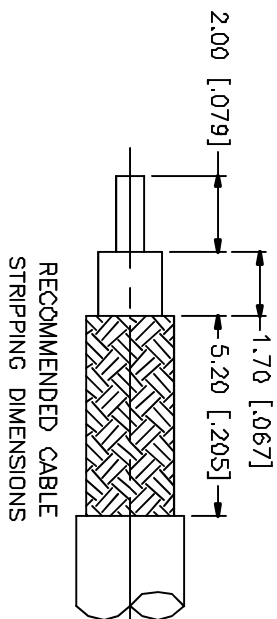


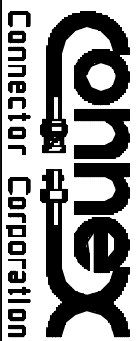
REV.	DATE	DESCRIPTION
NC	11/13/01	INITIAL RELEASE



CRIMP NOTES:

1. CRIMPED FERRULE  
HEX CRIMP SIZE .128"

DESCRIPTION	MATERIAL	FINISH	UNLESS OTHERWISE SPECIFIED DIMENSIONS ARE IN MILLIMETERS FOR CUSTOMER REFERENCE ONLY	APPROVALS	DATE	TITLE	SCALE	PART NO	SHEET
1 HOUSING	BRASS	GOLD	UNLESS OTHERWISE SPECIFIED TOLERANCES FOR MILLIMETERS ARE: 0.5-6 = ± 0.2 6-30 = ± 0.4 30-120 = ± 0.6 120-315 = ± 1 315-1000 = ± 1.6 1000-2000 = ± 2.4	DRAWN	11/13/01	MCX STRAIGHT CRIMP PLUG (FOR RG-179/u CABLE)	A	99001	252103-75
2 BODY	BER. COPPER	GOLD		CHECKED					
3 INSULATOR	TEFLON	NATURAL		ISSUED					
4 CONTACT PIN	BRASS	GOLD 30 MN.							
5 FERRULE	COPPER	GOLD							
6									
7									
8				DO NOT SCALE DRAWING					



MCX STRAIGHT CRIMP PLUG  
(FOR RG-179/u CABLE)

252103-75.DWG

1 OF 1

REV. NC