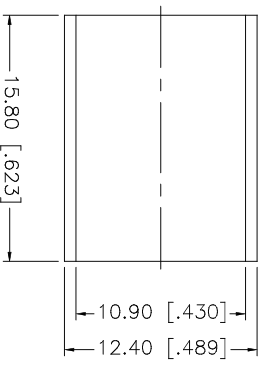
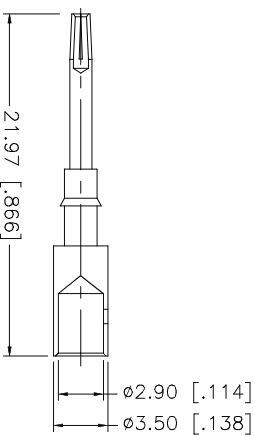
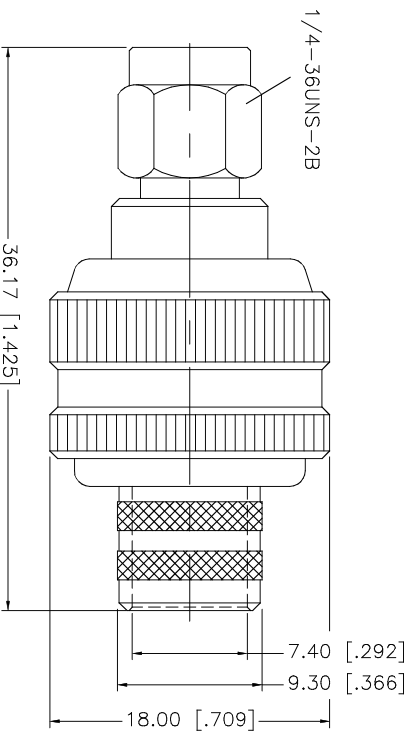
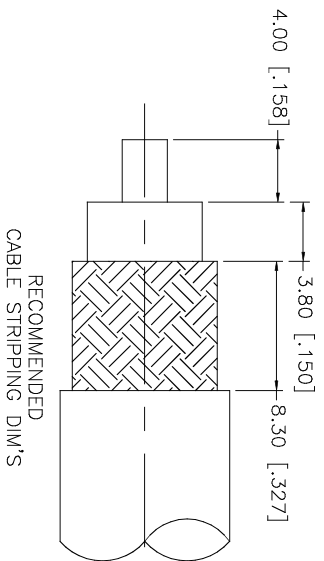


REV.	DATE	DESCRIPTION
NC	08/01/05	INITIAL RELEASE



NOTES:

1. CRIMPED FERRULE  
HEX CRIMP SIZE .429"
2. CONTACT PIN TO SOLDER

QTY	DESCRIPTION	MATERIAL	FINISH	QTY	UNLESS OTHERWISE SPECIFIED DIMENSIONS ARE IN INCHES AND FOR CUSTOMER REFERENCE ONLY.	UNLESS OTHERWISE SPECIFIED DIMENSIONS ARE IN MILLIMETERS	UNLESS OTHERWISE SPECIFIED TOLERANCES FOR MILLIMETERS ARE:	UNLESS OTHERWISE SPECIFIED TOLERANCES FOR INCHES ARE:	APPROVALS	DATE	PART DESCRIPTION			
1	HOUSING/BODY	BRASS	GOLD	1	1.180 - 4.724 = ± 0.020"	30 - 120mm ± 0.50mm	0.5 - 8mm ± 0.20mm	.020 - .315 = ± 0.007"	DRAWN	G.R.S.	08/01/05	SMA REVERSE POLARITY CRIMP PLUG (FOR BELDEN 9913, 9914, LMR-400)		
1	INSULATOR	TEFLON	NATURAL	1	1.180 - 4.724 = ± 0.020"	8 - 30mm ± 0.40mm	8 - 30mm ± 0.40mm	.315 - 1.180 = ± 0.015"	CHECKED					
1	CONTACT PIN	BER. COPPER	GOLD	1	1.180 - 4.724 = ± 0.020"	30 - 120mm ± 0.50mm	8 - 30mm ± 0.40mm	.020 - .315 = ± 0.007"	ISSUED					
1	FERRULE	COPPER	GOLD	1	1.180 - 4.724 = ± 0.020"	30 - 120mm ± 0.50mm	8 - 30mm ± 0.40mm	.020 - .315 = ± 0.007"	SHEET	1 OF 1				
<p style="text-align: center;"><b>Amphenol Connex</b></p> <p style="text-align: center;">PART DESCRIPTION</p> <p style="text-align: center;">SMA REVERSE POLARITY CRIMP PLUG (FOR BELDEN 9913, 9914, LMR-400)</p> <p style="text-align: center;">PART NO. 132298RP</p>														
DESCRIPTION					DO NOT SCALE DRAWING			CAD FILE		DWG. NO.		REV.	SIZE	SCALE
					C:/132/132298RP.DWG					132298RP.DWG		NC	A	NA