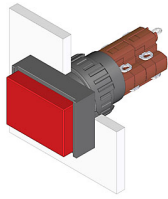


EAO – Your Expert Partner for Human Machine Interfaces

31-122.0252 - Illuminated pushbutton actuator

31-122.0252 - Illuminated pushbutton actuator



Attention: The preview is based on a sample product. This can differ from your current configuration.

Mounting

Mounting cut-out Ø 16 mm
Design raised

Front

Front shape rectangular
Front dimension 18 x 24 mm

Other Attributes

Weight 0.008 kg
Diode 1N4007 no value

IP-Rating

Front protection IP 40

Connection Method

Terminal Solder

Actuator

Switching action Momentary

Switching element

Switching system Snap-action switching element
Contacts 2 NC + 2 NO
Switching current 5 A
Contact material Gold
Switching voltage 250 V AC

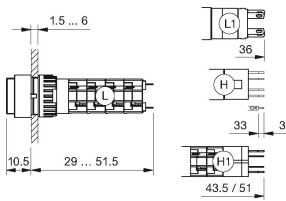
Function

Illuminated pushbutton

EAO – Your Expert Partner for Human Machine Interfaces

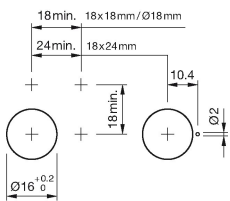
31-122.0252 - Illuminated pushbutton actuator

Dimensions

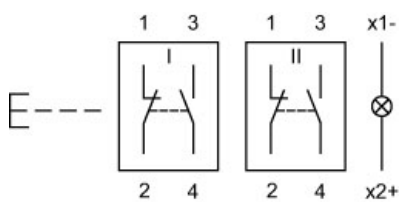


H = Universal terminal 2.0 x 0.5 mm

Mounting cut-outs



Wiring diagram



Legend

Contacts: NC = Normally closed, NO = Normally open
Switching action: B = Momentary