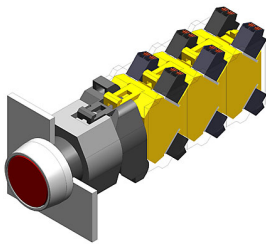


EAO – Your Expert Partner for Human Machine Interfaces

704.062.5 - Illuminated pushbutton actuator

704.062.5 - Illuminated pushbutton actuator



Attention: The preview is based on a sample product. This can differ from your current configuration.

Mounting

Mounting cut-out Ø 22.5 mm
Design raised

Front

Front shape round
Front dimension Ø 29 mm
Front ring material Aluminium
Front ring colour natural anodized

Other Attributes

Weight 0.056 kg

Operating-/Indication part

Lens optics transparent
Lens material Plastic
Lens colour green
Lens profile flat

IP-Rating

Front protection IP 65

Connection Method

Terminal Screw

Actuator

Switching action Maintained
Housing material Plastic
Housing colour grey

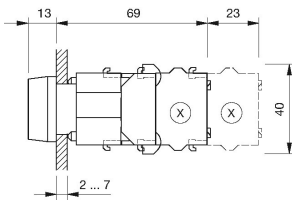
Function

Illuminated pushbutton

EAO – Your Expert Partner for Human Machine Interfaces

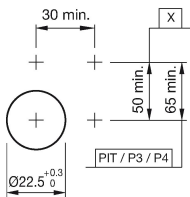
704.062.5 - Illuminated pushbutton actuator

Dimensions



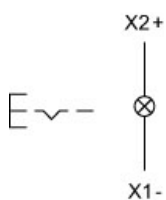
X = Screw terminal

Mounting cut-outs



PIT = Push-in terminal

Wiring diagram



Additional information

Frontring with protective cover to be mounted with a torque of 40 Ncm onto actuator
Max. 3 switching elements can be clipped on
The colour of anodized aluminium parts can vary due to technical production reasons

Legend

Switching action: C = Maintained