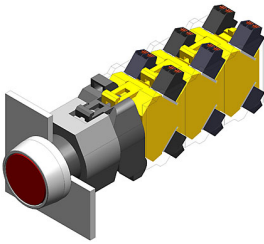


# EAO – Your Expert Partner for Human Machine Interfaces

## 704.032.7 - Illuminated pushbutton actuator

### 704.032.7 - Illuminated pushbutton actuator



*Attention: The preview is based on a sample product. This can differ from your current configuration.*

#### Mounting

Mounting cut-out  
Design  $\varnothing$  22.5 mm  
raised

#### Front

Front shape round  
Front dimension  $\varnothing$  29 mm  
Front ring material Aluminium  
Front ring colour natural anodized

#### Other Attributes

Weight 0.056 kg

#### Operating-/Indication part

Lens optics transparent  
Lens material Plastic  
Lens colour colourless  
Lens profile flat

#### IP-Rating

Front protection IP 65

#### Connection Method

Terminal Screw

#### Actuator

Switching action Momentary  
Housing material Plastic  
Housing colour grey

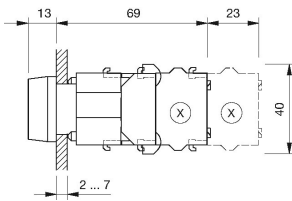
#### Function

Illuminated pushbutton

# EAO – Your Expert Partner for Human Machine Interfaces

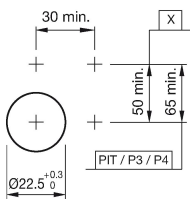
## 704.032.7 - Illuminated pushbutton actuator

### Dimensions



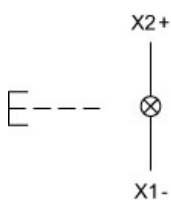
X = Screw terminal

### Mounting cut-outs



PIT = Push-in terminal

### Wiring diagram



### Additional information

Frontring with protective cover to be mounted with a torque of 40 Ncm onto actuator  
Max. 3 switching elements can be clipped on  
The colour of anodized aluminium parts can vary due to technical production reasons

### Legend

Switching action: B = Momentary