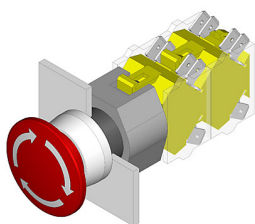


EAO – Your Expert Partner for Human Machine Interfaces

704.075.2 - Stop switch actuator

704.075.2 - Stop switch actuator



Attention: The preview is based on a sample product. This can differ from your current configuration.

Mounting

Mounting cut-out	Ø 22.5 mm
Design	raised

Front

Front ring material	Aluminium
Front shape	round
Front dimension	Ø 40 mm
Front ring colour	natural anodized

Other Attributes

Marking	Arrows
Weight	0.047 kg

Operating-/Indication part

Lens material	Plastic
Lens optics	opaque
Lens profile	Mushroom
Lens colour	red

IP-Rating

Front protection	IP 65
------------------	-------

Actuator

Switching action	Maintained
------------------	------------

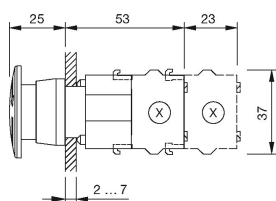
Function

Stop switch

EAO – Your Expert Partner for Human Machine Interfaces

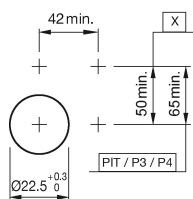
704.075.2 - Stop switch actuator

Dimensions



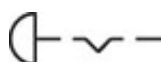
X = Screw terminal

Mounting cut-outs



PIT = Push-in terminal

Wiring diagram



Additional information

Twist to unlock clockwise

Max. 3 switching elements can be clipped on

The colour of anodized aluminium parts can vary due to technical production reasons

Legend

Switching action: C = Maintained