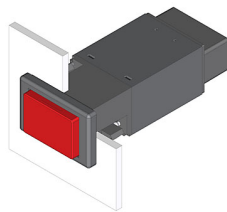


# EAO – Your Expert Partner for Human Machine Interfaces

## 22-213.014 - Illuminated pushbutton actuator

### 22-213.014 - Illuminated pushbutton actuator



*Attention: The preview is based on a sample product. This can differ from your current configuration.*

#### Mounting

Mounting cut-out 22 x 30 mm  
Design raised

#### Other Attributes

Weight 0.034 kg

#### IP-Rating

Front protection IP 65

#### Connection Method

Terminal Plug 6.3 x 0.8 mm

#### Actuator

Switching action Momentary

#### Switching element

Switching system Snap-action switching element  
Switching voltage 400 V AC  
Contacts 2 NO  
Switching current 10 A  
Contact material Silver

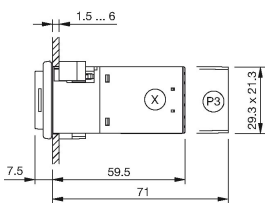
#### Function

Illuminated pushbutton

# EAO – Your Expert Partner for Human Machine Interfaces

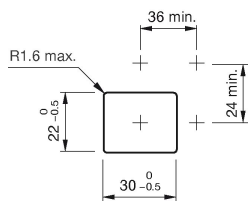
22-213.014 - Illuminated pushbutton actuator

## Dimensions

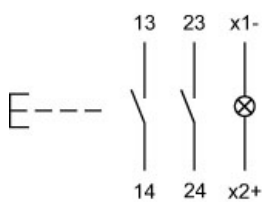


P3 = Plug-in terminal 6.3 x 0.8 mm

## Mounting cut-outs



## Wiring diagram



## Legend

Contacts: NO = Normally open  
Switching action: B = Momentary