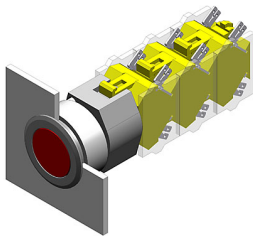


# EAO – Your Expert Partner for Human Machine Interfaces

704.012.518 - Pushbutton actuator

## 704.012.518 - Pushbutton actuator



*Attention: The preview is based on a sample product. This can differ from your current configuration.*

### Mounting

Mounting cut-out Ø 30.5 mm  
Design flush

### Front

Front shape round  
Front dimension Ø 35 mm  
Front ring material Aluminium  
Front ring colour natural anodized

### Other Attributes

Weight 0.051 kg

### Operating-/Indication part

Lens optics transparent  
Lens material Plastic  
Lens colour green  
Lens profile flat

### IP-Rating

Front protection IP 65

### Actuator

Switching action Momentary  
Housing material Plastic  
Housing colour grey

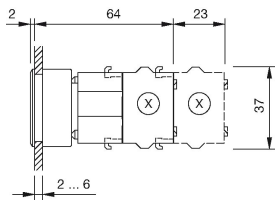
### Function

Pushbutton

# EAO – Your Expert Partner for Human Machine Interfaces

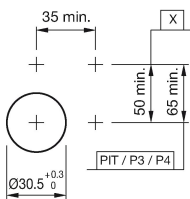
704.012.518 - Pushbutton actuator

## Dimensions



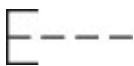
X = Screw terminal

## Mounting cut-outs



PIT = Push-in terminal

## Wiring diagram



## Additional information

Max. 3 switching elements can be clipped on  
The colour of anodized aluminium parts can vary due to technical  
production reasons

## Legend

Switching action: B = Momentary