



# Filters FN 761X



## AC Feedthrough Filter

### Approvals

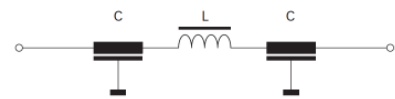


- IEC/EN 60939 approval
- Rated currents from 10 to 250A
- 5kV pulse test capability
- Class Y2 capacitor

### Technical specifications

Capacitor class:	Y2
Flammability corresponding to:	UL 94V-2 or better
High potential test voltage:	3000VDC for 2 sec
Insulation resistance (100VDC after 60 sec):	< 0.33μF, R > 15,000MΩ
	> 0.33μF, τ > 5000s
Maximum continuous operating voltage:	300VAC, 50/60Hz (ENEC) 250VAC, 50/60Hz (UL) 1000VDC max.
MTBF @ 60°C/300V (Mil-HB-217F):	< 200A: > 675,000 hours
MTBF @ 60°C/300V (Mil-HB-217F):	≥ 200A: > 494,000 hours
Rated currents:	10 to 250 A @ 60°C max.
Temperature range (operation and storage):	-40°C to +100°C (40/100/21)

### Typical electrical schematic



Feedthrough filters offer a high insertion loss across a broad band of frequencies from a few tens of kHz up to the GHz region. In general, feedthrough filters offer a higher level of EMI suppression than feedthrough capacitors of the same current rating. This is particularly relevant to applications where source impedance is smaller than 50Ω. Different versions are available offering a wide selection on operating currents and performance levels. AC feedthrough filters are designed and approved for up to 300VAC 50/60Hz operation.

### Features and benefits

- Very low internal series inductance.
- Very high self-resonant frequency.
- Self-healing dielectric.
- High quality and reliability.
- Through-bulkhead mounting.
- Anti-twist protection.
- Custom-specific or dual-versions on request.

### Typical applications

- Power line filter for 110/240VAC power lines
- Increasing system and information security
- Power supplies
- Switching and cellular equipment
- Computer servers
- UPS power supplies
- Medical equipment
- Shielded rooms

**Feedthrough selector table**

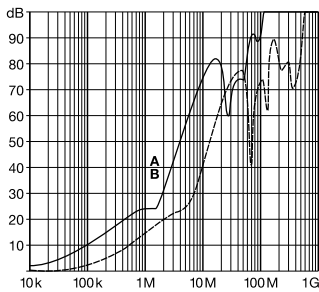
Feedthrough	Rated current @ 60°C [A]	Leakage current* @ 250VAC/50Hz [mA]	Capacitance** C [nF]	Inductance L @ 10kHz [nH]	DC resistance*** R @ 25°C [mΩ]	Weight [g]
FN 7611-10-M3	10	1.89	10	70	1.2	55
FN 7612-10-M3	10	8.86	47	70	1.52	70
FN 7611-16-M4	16	4.15	22	70	0.65	80
FN 7612-16-M4	16	18.85	100	70	0.92	90
FN 7611-32-M4	32	4.15	22	70	0.65	80
FN 7612-32-M4	32	18.85	100	70	0.92	90
FN 7611-63-M6	63	28.3	150	186	0.47	250
FN 7612-63-M6	63	88.6	470	124	0.53	500
FN 7612-100-M8	100	188	1000	124	0.23	750
FN 7611-250-M12 0	250	88.6	470	169	0.23	1086

\* Tolerance +20%  
 \*\* Tolerance ±20%  
 \*\*\* Tolerance +15%

**Typical filter attenuation**

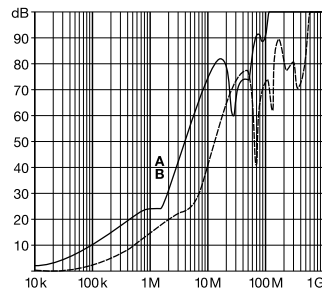
Full load, 50Ω system

10A types



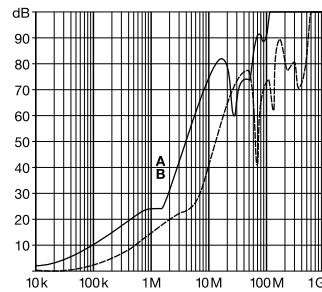
A = FN 7612-10-M3  
 B = FN 7611-10-M3

16A types



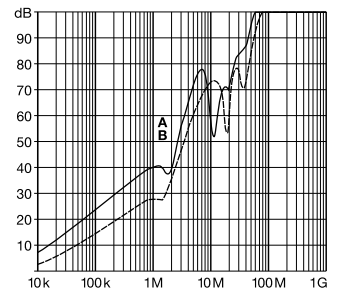
A = FN 7612-16-M4  
 B = FN 7611-16-M4

32A types



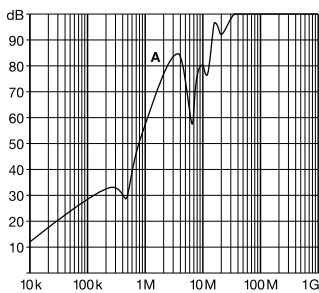
A = FN 7612-32-M4  
 B = FN 7611-32-M4

63A types



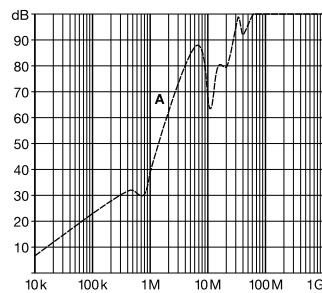
A = FN 7612-63-M6  
 B = FN 7611-63-M6

100A types



A = FN 7612-100-M8

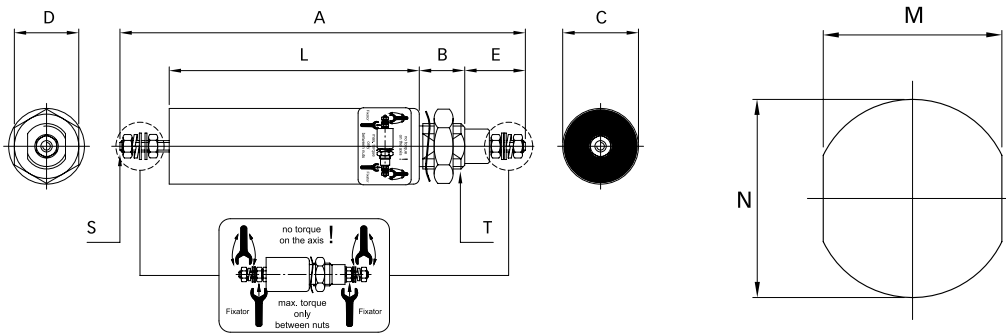
250A types



A = FN 7611-250-M12

**Mechanical data**

Panel cut out



**Dimensions**

	A	B	C	D	E	L	M	N	S	T
<b>FN 7611-10-M3</b>	107	12	20	17	16	66	10.3	Ø12.3	M3	M12x1
<b>FN 7612-10-M3</b>	140	12	20	17	16	99	10.3	Ø12.3	M3	M12x1
<b>FN 7611-16-M4</b>	116	14	25	22	18	69	14.3	Ø16.3	M4	M16x1
<b>FN 7612-16-M4</b>	148	14	25	22	18	101	14.3	Ø16.3	M4	M16x1
<b>FN 7611-32-M4</b>	116	14	25	22	18	69	14.3	Ø16.3	M4	M16x1
<b>FN 7612-32-M4</b>	148	14	25	22	18	101	14.3	Ø16.3	M4	M16x1
<b>FN 7611-63-M6</b>	173	16	32	27	26	105	18.3	Ø20.3	M6	M20x1
<b>FN 7612-63-M6</b>	189	19	54	41	26	118	24.3	Ø27.3	M6	M27x1.5
<b>FN 7612-100-M8</b>	227	19	54	41	32	144	24.3	Ø27.3	M8	M27x1.5
<b>FN 7611-250-M12</b>	267	19	54	41	46	160	29.3	Ø32.3	M12	M32x1.5
<b>Tolerances</b>					±2		±0.2			

All dimensions in mm; 1 inch = 25.4mm  
 Tolerances according: ISO 2768-m / EN 22768-m

**Recommended torque**

	M3	M4	M6	M8	M12	M12x1	M16x1	M20x1	M27x1.5	M32x1.5
<b>Terminal thread</b>	0.5Nm	1.2Nm	2.5Nm	5Nm	11Nm					
<b>Mounting thread</b>						3Nm	4Nm	7Nm	12Nm	14Nm

**Headquarters, global  
innovation and  
development center**

**Schaffner Group**

Nordstrasse 11  
4542 Luterbach  
Switzerland  
T +41 32 681 66 26  
F +41 32 681 66 30  
info@schaffner.com  
www.schaffner.com

To find your local partner within  
Schaffner's global network,  
please go to:  
[www.schaffner.com](http://www.schaffner.com)

© 2014 Schaffner Group  
The content of this document  
has been carefully checked and  
understood. However, neither  
Schaffner nor its subsidiaries  
assume any liability whatsoever  
for any errors or inaccuracies of  
this document and the  
consequences thereof. Published  
specifications are subject to  
change without notice. Product  
suitability for any area of  
application must ultimately be  
determined by the customer. In  
all cases, products must never  
be operated outside their  
published specifications.  
Schaffner does not guarantee  
the availability of all published  
products. This disclaimer shall  
be governed by substantive  
Swiss law and resulting disputes  
shall be settled by the courts at  
the place of business of  
Schaffner Holding AG. Latest  
publications and a complete  
disclaimer can be downloaded  
from the Schaffner website. All  
trademarks recognized.

**Sales and application centers**

**China**

**Schaffner EMC Ltd. Shanghai**  
T20-3, No 565 Chuangye Road  
Pudong New Area  
201201 Shanghai  
T +86 21 3813 9500  
F F +86 21 3813 9501 / 02  
[cschina@schaffner.com](mailto:cschina@schaffner.com)  
<http://www.schaffner.com.cn/>

**Finland**

**Schaffner Oy**  
Sauvonrinne 19 H  
08500 Lohja  
T +358 19 35 72 71  
[finlandsales@schaffner.com](mailto:finlandsales@schaffner.com)

**France**

**Schaffner EMC S.A.S.**  
112, Quai de Bezons  
Boîte postale 133  
95103 Argenteuil  
T +33 1 34 34 30 60  
F +33 1 39 47 02 28  
[francesales@schaffner.com](mailto:francesales@schaffner.com)

**Italy**

**Schaffner EMC S.r.l.**  
Via Galileo Galilei 47  
20092 Cinisello Balsamo (MI)  
T +39 02 66 04 30 45/47  
F +39 02 61 23 943  
[italysales@schaffner.com](mailto:italysales@schaffner.com)

**Japan**

**Schaffner EMC K.K.**  
1-32-12, Kamiuma, Setagaya-ku  
7F Mitsui-seimei Sangenjaya Bldg.  
154-0011 Tokyo  
T +81 3 5712 3650  
F +81 3 5712 3651  
[japansales@schaffner.com](mailto:japansales@schaffner.com)  
<http://www.schaffner.jp>

**Singapore**

**Schaffner EMC Pte Ltd.**  
Blk 3015A Ubi Road 1  
05-09 Kampong Ubi Industrial Estate  
408705 Singapore  
T +65 6377 3283  
F +65 6377 3281  
[singaporesales@schaffner.com](mailto:singaporesales@schaffner.com)

**Germany**

**Schaffner Deutschland GmbH**  
Schoemperlenstrasse 12B  
76185 Karlsruhe  
T +49 721 56910  
F +49 721 569110  
[germanysales@schaffner.com](mailto:germanysales@schaffner.com)

**Spain**

**Schaffner EMC España**  
Calle Caléndula 93, Miniparc III, Edificio  
E  
El Soto de la Moraleja Alcobendas  
28109 Madrid  
T +34 618 176 133  
[spainsales@schaffner.com](mailto:spainsales@schaffner.com)

**Sweden**

**Schaffner EMC AB**  
Turebergstorg 1, 6  
19147 Sollentuna  
T +46 8 5792 1121 / 22  
F +46 8 92 96 90  
[swedensales@schaffner.com](mailto:swedensales@schaffner.com)

**Switzerland**

**Schaffner EMV AG**  
Nordstrasse 11  
4542 Luterbach  
T +41 32 6816 626  
F +41 32 6816 641  
[sales@schaffner.ch](mailto:sales@schaffner.ch)

**Taiwan R.O.C.**

**Schaffner EMV Ltd.**  
6 Floor, No. 413  
Rui Guang Road  
114 Neihu District Taipei City  
T +886 2 87525050  
F +886 2 87518086  
[taiwansales@schaffner.com](mailto:taiwansales@schaffner.com)

**Thailand**

**Schaffner EMC Co. Ltd.**  
Northern Region Industrial Estate  
67 Moo 4 Tambon Ban Klang Amphur  
Muangng P.O. Box 14  
51000 Lamphun  
T +66 53 58 11 04  
F +66 53 58 10 19  
[thailandsales@schaffner.com](mailto:thailandsales@schaffner.com)

**UK**

**Schaffner Ltd.**  
5 Ashville Way  
Molly Millars Lane Wokingham  
RG41 2PL Berks hire  
T +44 118 9770070  
F +44 118 9792969  
[uksales@schaffner.com](mailto:uksales@schaffner.com)  
<http://www.schaffner.uk.com>

**USA**

**Schaffner EMC Inc.**  
52 Mayfield Avenue  
08837 Edison  
T 1-800-367-5566  
T 732-225-9533  
F 732-225-4789  
[usasales@schaffner.com](mailto:usasales@schaffner.com)  
<http://www.schaffner.com/us>