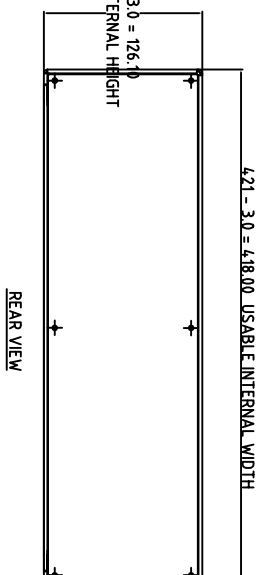
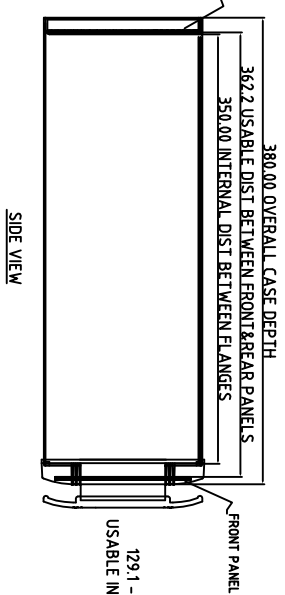
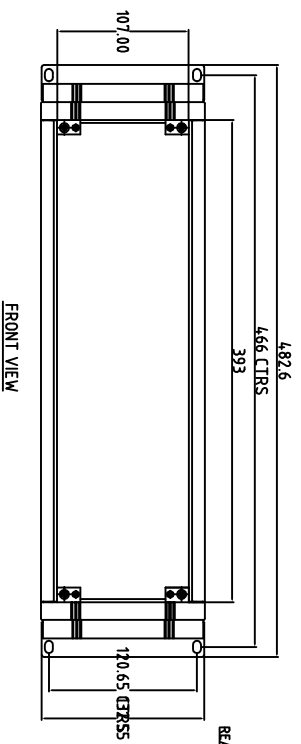
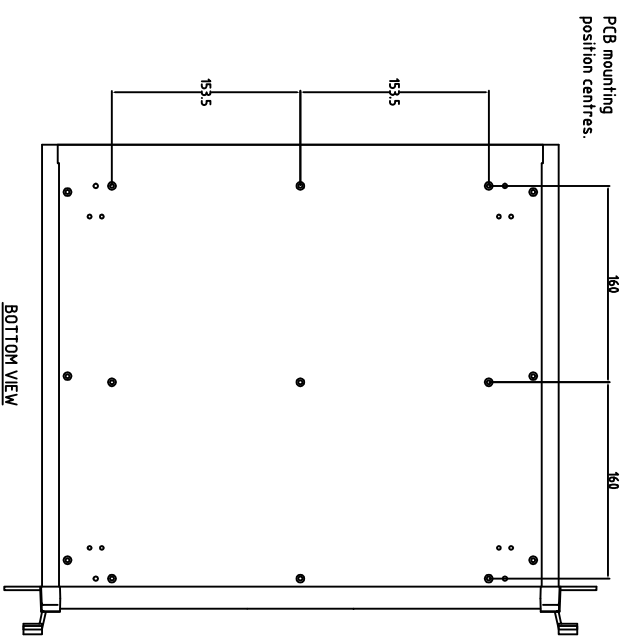


FIRST ANGLE PROJECTION



3U x 380MM UNIMET RACK CASE

FRONT BEZEL POWDER COATED RAL 7040
 REAR SHELL ASSEMBLY POWDER COATED RAL 7035
 REAR RECESS OF BEZEL & FRONT MATING FLANGE OF SHELL TO BE MASKED
 MATERIAL: CASE BODY & REAR PANEL - 150mm AL

Tolerances unless otherwise stated:
 General tolerances ± 0.20
 Resultant tolerances between hole centers ± 0.15
 Tolerances on hole diameters ± 0.05
 Angles $\pm 0.5^\circ$
 Surface finish $32/\sqrt{}$

Required Finish:

Scale: 1:2

ALL DIMENSIONS IN MILLIMETRES

DO NOT SCALE

Drawn by: Ian Cox

Checked By:

Drawing Number: M5619335

Date drawn: April '12

Material Spec:

www.metcase.com

METcase
 METCASE ENCLOSURES
 15 Brunel Way,
 Segensworth East, Fareham,
 Hampshire, PO15 5TX, UK.

Part Name: 19" x 3U (3HE) x 380 dp
 Part Number: M5619335

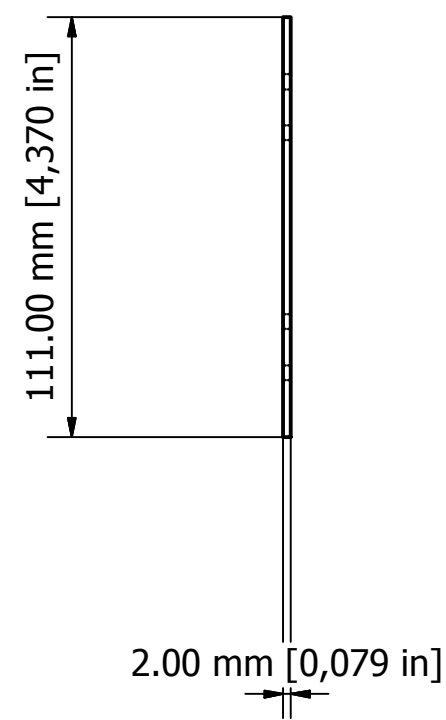
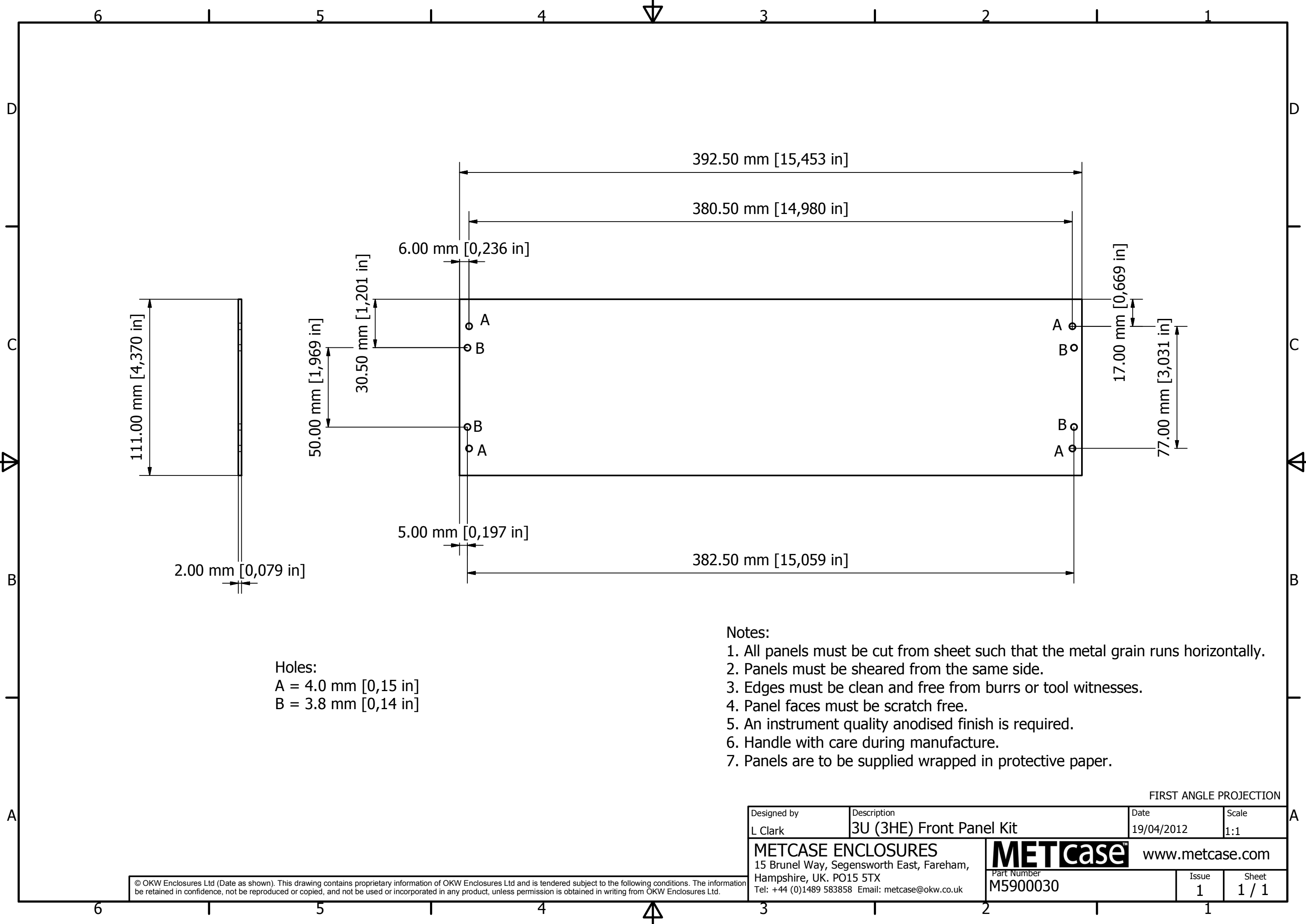
Sheet 1 of 1

OKW ENCLOSURES LTD (DATE AS SHOWN). THIS DRAWING CONTAINS PROPRIETARY INFORMATION OF OKW ENCLOSURES LTD AND IS TENDERED SUBJECT TO THE FOLLOWING CONDITIONS: THE INFORMATION BE RETAINED IN CONFIDENCE, NOT BE REPRODUCED OR COPIED, AND NOT BE USED OR INCORPORATED IN ANY PRODUCT, UNLESS PERMISSION IS OBTAINED IN WRITING FROM OKW ENCLOSURES LTD.

A0

Modifications

Iss 1



Holes:
 A = 4.0 mm [0,15 in]
 B = 3.8 mm [0,14 in]

Notes:

1. All panels must be cut from sheet such that the metal grain runs horizontally.
2. Panels must be sheared from the same side.
3. Edges must be clean and free from burrs or tool witnesses.
4. Panel faces must be scratch free.
5. An instrument quality anodised finish is required.
6. Handle with care during manufacture.
7. Panels are to be supplied wrapped in protective paper.

FIRST ANGLE PROJECTION

Designed by L Clark	Description 3U (3HE) Front Panel Kit	Date 19/04/2012	Scale 1:1
METCASE ENCLOSURES 15 Brunel Way, Segensworth East, Fareham, Hampshire, UK. PO15 5TX Tel: +44 (0)1489 583858 Email: metcase@okw.co.uk		METcase™ www.metcase.com Part Number M5900030	
		Issue 1	Sheet 1 / 1

© OKW Enclosures Ltd (Date as shown). This drawing contains proprietary information of OKW Enclosures Ltd and is tendered subject to the following conditions. The information be retained in confidence, not be reproduced or copied, and not be used or incorporated in any product, unless permission is obtained in writing from OKW Enclosures Ltd.