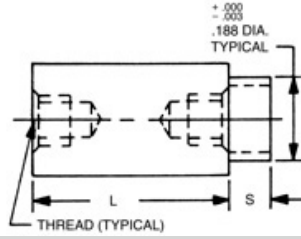
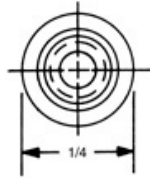
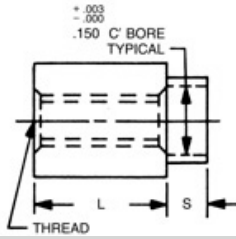


1/4 ROUND SWAGE STANDOFFS

RAF



RAF

Order Code:

Finishes:

[\[How to create part numbers\]](#) [\[Material Specifications\]](#)

SELECT	PART NO.	LENGTH
<input type="radio"/>	3045A	3/32
<input type="radio"/>	3045	1/8
<input type="radio"/>	3045T	5/32
<input type="radio"/>	3046	3/16
<input type="radio"/>	3046T	7/32
<input type="radio"/>	3047	1/4
<input type="radio"/>	3047T	9/32
<input type="radio"/>	3048	5/16
<input type="radio"/>	3048T	11/32
<input type="radio"/>	3049	3/8
<input type="radio"/>	3049T	13/32
<input type="radio"/>	3050	7/16
<input type="radio"/>	3050T	15/32
<input type="radio"/>	3051	1/2
<input type="radio"/>	3051T	17/32

Select	PART NO.	LENGTH
<input type="radio"/>	3052	9/16
<input type="radio"/>	3052T	19/32
<input type="radio"/>	3053	5/8
<input type="radio"/>	3053T	21/32
<input type="radio"/>	3054	11/16
<input type="radio"/>	3054T	23/32
<input type="radio"/>	3055	3/4
<input type="radio"/>	3055T	25/32
<input type="radio"/>	3056	13/16
<input type="radio"/>	3056T	27/32
<input type="radio"/>	3057	7/8
<input type="radio"/>	3057T	29/32
<input type="radio"/>	3058	15/16
<input type="radio"/>	3058T	31/32
<input type="radio"/>	3059	1

SELECT	PART NO.	LENGTH
<input type="radio"/>	3060	1-1/16
<input type="radio"/>	3061	1-1/8
<input type="radio"/>	3062	1-3/16
<input type="radio"/>	3063	1-1/4
<input type="radio"/>	3064	1-5/16
<input type="radio"/>	3065	1-3/8
<input type="radio"/>	3066	1-7/16
<input type="radio"/>	3067	1-1/2
<input type="radio"/>	3068	1-9/16
<input type="radio"/>	3069	1-5/8
<input type="radio"/>	3070	1-11/16
<input type="radio"/>	3071	1-3/4
<input type="radio"/>	3072	1-13/16
<input type="radio"/>	3073	1-7/8
<input type="radio"/>	3074	1-15/16
<input type="radio"/>	3075	2

SWAGE/PANEL CODE			
Select	S	+ .003 - .003	P
<input type="radio"/>	A	.075	1/32
<input type="radio"/>	B	.105	1/16
<input type="radio"/>	C	.135	3/32
<input type="radio"/>	D	.165	1/8
<input type="radio"/>	E	.230	3/16
<input type="radio"/>	F	.290	1/4

SWAGE TOOLING		
PUNCH	ANVIL	LENGTH
P-4	AR-22	3/32-3/16
	AR-23	7/32-7/16
	AR-24	15/32-11/16
	AR-25	23/32-2"

L = STANDOFF LENGTH
 S = SHANK LENGTH
 P = BOARD THICKNESS

Select	CODE	THREAD
<input type="radio"/>	256	2-56
<input type="radio"/>	348	3-48
<input type="radio"/>	440	4-40
<input type="radio"/>	632	6-32

For thread depth information please click [here](#)

Select	CODE	MATERIAL	RoHS
<input type="radio"/>	AL	Aluminum	YES
<input type="radio"/>	B	Brass	YES
<input type="radio"/>	SS	Stainless Steel	YES
<input type="radio"/>	S	Steel	YES

Ordering Code				
xxxx	x	xxx	x	x
Shank		Material		Finish
Length		Thread		

For non standard items please click [here](#)

RAF

© 1999 RAF Electronic Hardware All Rights Reserved

Seymour CT 06483 203 888-2133 Fax: 203 888-9860 www.rafdwe.com