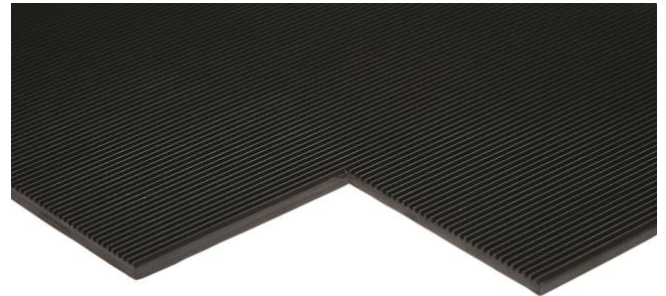




ENGLISH

Product datasheet  
**COBASwitch BSEN:61111 Class 2**



Electrical Insulating Matting

Size: SM010060      1m x 10m      RS Code: 790-2988  
 Size: SM010061      1m x 1m      790-2997  
 Size: SM010062      1m x 2m      790-2990

- Thickness: 4mm
- Ribbed Surface offers traction under foot
- Resistant to acid, oil and low temperature
- Manufactured with colour coded tape to depict the classification on the reverse of the matting
- Provides safety for operatives against electrical shocks
- Ideal for use in front of switchboards and high voltage equipment

AS PER IEC 61111:2009 ELECTRICAL PROPERTIES

Clause No.	PROPERTIES	TEST METHOD	SPECIFICATION
	Specific gravity	DIN 53508	1.50 ± 0.05
	Hardness, Shore A	DIN 53505	70 ± 5
	Tensile Strength, Kg/cm <sup>2</sup>	DIN 53504	40
	Elongation at Break, %	DIN 53504	200
<b>5.6.2.2</b>	<b>PROOF TEST</b>		
	Class -2 (4 mm )Base thickness	20 KV for 3 Minutes	
<b>5.6.2.3</b>	<b>WITHSTAND TEST</b>		
	Class -2 (4mm )	30 KV - No electrical puncture	
<b>5.5.2</b>	MECHANICAL PUNCTURE RESISTANCE, MIN	70 N	
<b>5.7</b>	AGEING TEST AT 70°C/168 HRS	PUNCTURE RESISTANCE SHOULD BE MINIMUM 80% OF ORIGINAL VALUE - PASS	
<b>5.9</b>	ACID RESISTANCE TEST AT SULFURIC ACID SOLN/23°C/8HRS		
	A)WITHSTAND TEST	10 KV - NO ELECTRICAL PUNCTURE (1 MIN.) - PASS	
	B) MECHANICAL PUNCTURE RESISTANCE	PUNCTURE RESISTANCE SHOULD BE MINIMUM 75% OF ORIGINAL VALUE - PASS	
<b>5.1</b>	OIL RESISTANCE AT 70°C/24HRS/OIL # 1		
	A)WITHSTAND TEST	10 KV - NO ELECTRICAL PUNCTURE (1 MIN.) - PASS	
	B) MECHANICAL PUNCTURE RESISTANCE	PUNCTURE RESISTANCE SHOULD BE MINIMUM 75% OF ORIGINAL VALUE - PASS	
<b>5.5.3</b>	SLIP RESISTANCE TEST	AVG. FORCE HIGHER THAN 50 N - PASS	
<b>5.8.2</b>	LOW TEMPERATURE FOLDING TEST AT -25°C for 4 hrs	NO CRACK, NO ELECTRICAL PUNCTURE - PASS	
	COLOUR	BLACK	
	SURFACE FINISH	FINE RIB	