

**LTV-5**  
Pin Plunger



**LTV-10**  
Straight Leaf



**LTV-15** Roller Leaf  
**LTV-90** Nylon Roller



**LTV-20**  
One-Way Roller Leaf



**LTV-25\***  
Roller Plunger



**LTV-30\***  
Cross Plunger



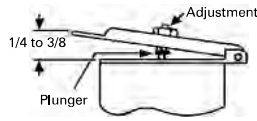
\* For 15/32" panel openings;  
15/32-32 UNS

**Light-Touch, Snap-Acting Control Valves**

Mead's LTV valves are compact 1/8" ported 4-way valves that may be actuated by hand, remote air signal, electric signal or mechanically by a machine element. They are ideal for powering small or medium sized cylinders and for piloting larger valves. Some models require as little as 4 ounces of force and .010" of plunger travel to actuate. See the chart on the opposite page for individual valve specifications.

**Micrometer Trip Position Adjustment Available On LTV-10, LTV-15 and LTV 20**

An optional screw adjustment on the valve lever allows the user precision control of the valve actuator. Specify LTV-10A, LTV-15A, or LTV-20A.



**DIN Solenoid Connectors**

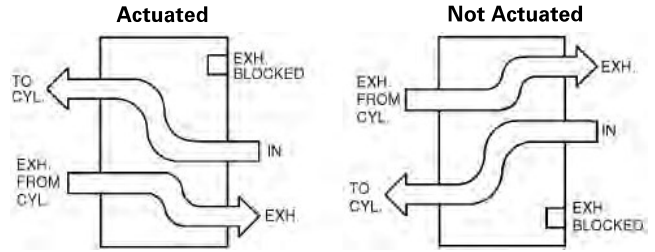
Electrically actuated LTV valves utilize DIN type solenoids. DIN solenoids feature a totally encapsulated coil with 3 prongs, allowing fast and easy connections. DIN connectors are ordered separately. Mead offers 3 types of DIN connectors to facilitate connections to the solenoid. A full description of these connectors can be found on page 68.



Solenoid shown with connector PVD1 (sold separately)

**LTV Flow Patterns**

For all models, except LTV-60, which is opposite.



**General Specifications**

<b>Pressure Range:</b>	25 to 125 PSI (Solenoid models to 100 PSI)
<b>Temperature:</b>	0°F to 115°F
<b>Flow:</b>	0.24 C <sub>v</sub>
<b>Flow at 100 PSI:</b>	14 SCFM
<b>Ports:</b>	1/8" NPT Standard; LTV-60 and LTV-110 pilot ports are 10-32
<b>Lubrication:</b>	Petroleum Base Oil
<b>Filtration:</b>	40 Micron Minimum
<b>Body:</b>	Cast Aluminum
<b>Seals:</b>	Buna N
<b>Spool:</b>	Aluminum
<b>Response:</b>	20-30 ms

**Valve Symbols** (Only Model Numbers are indicated.)

5, 10, 45, 50 & 85



115DD



15, 25, 30, 40 & 75



120DD



20 & 80



125, 140, MH, EH & FH



60 & 60L



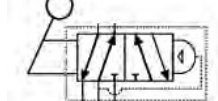
130 & ES



110



35 & TP



**Solenoid Models:**

24 VDC = 6.5 watts / .27 amp  
120 VAC = 8.5 watts / .07 amps

**LTV-75**  
Roller



**LTV-80**  
One-Way Roller



**LTV-85**  
Extended Rod (6")



**LTV-115DD**  
Single Solenoid



**LTV-120DD**  
Double Solenoid



**LTV-125, LTV-130**  
Knob\* (LTV-125 has threaded stem)



\* For 15/32" panel openings;  
15/32-32 UNS

**LTV-35\***  
Flip Toggle



**LTV-40\***  
Ball Roller



**LTV-45\***  
Straight Plunger



**LTV-50**  
Fingertip Lever



**LTV-60, Single Pressure**  
**LTV-110, Double Pressure**

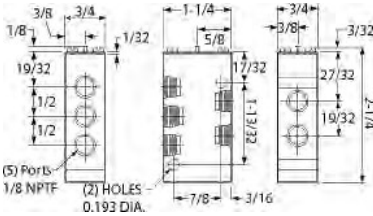


**LTV-60L**  
Low Pressure



\* For 15/32" panel openings;  
15/32-32 UNS

**Basic Dimensions**



Note: Envelope dimensions of valves with actuators are shown in the chart on the right.

**LTV Valve Stacks**

Stacked valves reduce piping requirements by eliminating the need for a separate air supply to each valve. All LTV valves are stackable except LTV-75, 80, 85, 140, MH, TP, EH, FH & ES. When LTV-50, LTV-115DD or LTV-120DD valves are stacked 1/4" spacers are added between valves. To order, add "M" to the model number, specify number, type and position of valves.



Solenoids shown here with connector PVD1 (sold separately)

Model	Actuator	Return	Act. Force @ 80 PSI	Act. Stroke Distance(")		Leng. (")	Width (")	Hgt. (")
				Full Open	Over Travel			
LTV-5	Pin Plunger	Air Spring	13 oz.	.016	.094	1 1/4	3/4	2 3/8
LTV-10	Straight Leaf	Air Spring	5.5 oz.	.016	.156	2 3/32	3/4	2 1/2
LTV-10A	Adjustable Leaf	Air Spring	5.5 oz.	.016	.156	2 3/32	3/4	2 5/8
LTV-15	Roller Leaf	Air Spring	5.5 oz.	.016	.156	2 5/32	3/4	2 7/8
LTV-15A	Adjustable Roller Leaf	Air Spring	5.5 oz.	.016	.156	2 5/32	3/4	3
LTV-20	1-Way Roller Leaf	Air Spring	5.5 oz.	.016	.156	2 3/32	3/4	3 11/32
LTV-20A	Adjustable Roller Leaf	Air Spring	5.5 oz.	.016	.156	2 3/32	3/4	3 15/32
LTV-25	Roller Plunger	Air Spring	13 oz.	.016	.094	1 1/4	3/4	3 5/8
LTV-30	Cross Plunger	Air Spring	13 oz.	.016	.094	1 1/4	3/4	3 5/8
LTV-35	Flip Toggle	Detent	9.25 oz.	30°	-	1 1/4	3/4	3 25/32
LTV-40	Ball Roller	Air Spring	13 oz.	.016	.094	1 1/4	3/4	3 1/32
LTV-45	Straight Plunger	Air Spring	13 oz.	.016	.094	1 1/4	3/4	3 11/32
LTV-50	Fingertip Lever	Air Spring	5.5 oz.	.016	.156	2 17/32	3/4	2 11/16
LTV-60+	Single Pressure~	Air Spring	-	-	-	1 1/4	3/4	2 11/32
LTV-60L*	Low Pressure	Air Spring	-	-	-	1 1/4	3/4	3 3/32
LTV-75	Heavy-Duty Roller	Air Spring	14 oz.	.031	.313	2 7/32	3/4	4 5/32
LTV-80	Heavy-Duty 1-Way Roller	Air Spring	14 oz.	.031	.313	2 13/32	3/4	4 15/32
LTV-85	Heavy-Duty Extended Rod	Air Spring	4 oz.	.125	.500	6 1/4	3/4	3 17/32
LTV-90	Adjustable Roller Leaf	Air Spring	5.5 oz.	.016	.156	2 5/32	3/4	3
LTV-110	Double Pressure~	Ext. Air Pilot	-	-	-	1 1/4	3/4	2 11/32
LTV-115DD**	Solenoid (DIN)	Air Spring	-	-	-	1 5/8	7/8	3 9/32
LTV-120DD**	Solenoid (DIN)	Solenoid	-	-	-	1 5/8	7/8	4 19/32
LTV-125	Knob	Air Spring	13 oz.	.016	-	1 1/4	5/8	3 19/32
LTV-130	Knob	Detent	2 lbs.	.094	.125	1 1/4	5/8	3 9/32
LTV-140	Palm	Air Spring	13 oz.	.016	.094	1 3/8	1 3/8	3 25/32
LTV-MH ^	Mushroom Head	Air Spring	1 lb.	.218	.047	1 5/8	1 5/8	4 3/16
LTV-TP	Two Position	Detent	-	-	-	1 5/8	1 5/8	4 5/16
LTV-EH ^	Extended Head	Air Spring	-	.218	.049	1 5/8	1 5/8	3 13/16
LTV-FH ^	Flush Head	Air Spring	-	.218	.049	1 5/8	1 5/8	3 3/4
LTV-ES	Emergency Stop (Red)	Detent	2 lbs.	.218	.125	2 1/2	2 1/2	4 9/32

\* Minimum pilot pressure of 25 PSI required.  
\*\* Specify voltage: 12DC, 24DC, 24AC or 120AC  
^ Specify actuator color: red, green or black

+ Pilot pressure must equal at least 60% of inlet pressure.  
~ 10-32 pilot port

**LTV-140\***  
Palm



**LTV-MH\*\***  
Mushroom Head



**LTV-TP\*\***  
Two Position  
Detent



**LTV-EH\*\***, Extended Head  
**LTV-FH\*\***, Flush Head



**LTV-ES**, Emergency Stop



\* For 15/32" panel openings;  
15/32-32 UNS \*\* For 1 3/16" panel openings