



621/622 SERIES

- Vacuum and compound ranges through 0 psig to 15,000 psig; absolute ranges from 0 psia to 15 psia through 0 psia to 100 psia
- Current and voltage outputs available
- 316 Stainless Steel and Elgiloy wetted parts
- CE compliant to suppress RFI, EMI and ESD
- NACE MR0175/ISO 15156 compliant
- NSI/ISA-12.27.01-2003 approved single seal

SPECIFICATIONS

Output signals	4 mA to 20 mA, 2-wire; 1 Vdc to 5 Vdc, 3-wire; 0.5 Vdc to 4.5 Vdc, 3-wire												
Pressure ranges	Vacuum through 0 psi to 15,000 psi Absolute from 0 psia to 15 psia through 0 psia to 100 psia												
Accuracy	±0.25% full scale (BFSL) (Includes the effects of non-linearity, hysteresis, non-repeatability, zero point and full scale errors)												
Stability	≤±0.2% full scale for 1 year, non-accumulating												
Response time	≤1 ms (between 10% and 90% full scale)												
Service life	>100,000,000 load cycles												
Temperature ranges	<table border="1"> <tr> <td>Compensated</td><td>32 °F to 176 °F (0 °C to 80 °C)</td></tr> <tr> <td>Zero effect</td><td>±0.011% full scale/ °F</td></tr> <tr> <td>Span effect</td><td>±0.011% full scale/ °F</td></tr> <tr> <td>Media</td><td> T6: -40 °F to 131 °F (-40 °C to 55 °C) T5: -40 °F to 158 °F (-40 °C to 70 °C) T4: -40 °F to 212 °F (-40 °C to 100 °C) </td></tr> <tr> <td>Ambient</td><td> T6: -40 °F to 140 °F (-40 °C to 60 °C) T5: -40 °F to 167 °F (-40 °C to 75 °C) T4: -40 °F to 221 °F (-40 °C to 105 °C) </td></tr> <tr> <td>Storage</td><td>-40 °F to 221 °F (-40 °C to 105 °C)</td></tr> </table>	Compensated	32 °F to 176 °F (0 °C to 80 °C)	Zero effect	±0.011% full scale/ °F	Span effect	±0.011% full scale/ °F	Media	T6: -40 °F to 131 °F (-40 °C to 55 °C) T5: -40 °F to 158 °F (-40 °C to 70 °C) T4: -40 °F to 212 °F (-40 °C to 100 °C)	Ambient	T6: -40 °F to 140 °F (-40 °C to 60 °C) T5: -40 °F to 167 °F (-40 °C to 75 °C) T4: -40 °F to 221 °F (-40 °C to 105 °C)	Storage	-40 °F to 221 °F (-40 °C to 105 °C)
Compensated	32 °F to 176 °F (0 °C to 80 °C)												
Zero effect	±0.011% full scale/ °F												
Span effect	±0.011% full scale/ °F												
Media	T6: -40 °F to 131 °F (-40 °C to 55 °C) T5: -40 °F to 158 °F (-40 °C to 70 °C) T4: -40 °F to 212 °F (-40 °C to 100 °C)												
Ambient	T6: -40 °F to 140 °F (-40 °C to 60 °C) T5: -40 °F to 167 °F (-40 °C to 75 °C) T4: -40 °F to 221 °F (-40 °C to 105 °C)												
Storage	-40 °F to 221 °F (-40 °C to 105 °C)												
Power requirement*	10 Vdc to 30 Vdc (4 mA to 20 mA, 2-wire) 6 Vdc to 30 Vdc (1 Vdc to 5 Vdc, 3-wire, 0.5 Vdc to 4.5 Vdc, 3-wire) 14 Vdc to 30 Vdc (0 Vdc to 10 Vdc, 3-wire)												
Load limitations	≤ (VPower-10)/0.020 Amp for 4 mA to 20 mA ≥ 10,000 Ω for 1 Vdc to 5 Vdc, 3-wire												
Proof pressure	3 times full scale for ranges 0 psi to 15 psi through 0 psi to 200 psi 1.75 times full scale for ranges 0 psi to 300 psi through 0 psi to 10,000 psi 1.5 times full scale for 0 psi to 15,000 psi												
Burst pressure	3.8 times full scale for ranges 0 psi to 15 psi through 0 psi to 200 psi 4 times full scale for ranges 0 psi to 300 psi through 0 psi to 10,000 psi 3 times full scale for 0 psi to 15,000 psi												
Measuring element	621 Series is 316 Stainless Steel for ranges up through 0 psi to 300 psi, 316 Stainless Steel with Elgiloy ranges 0 psig to 500 psig and higher; 622 Series is 316 Stainless Steel with NBR o-ring; (FKM o-ring optional)												
Connection	316 Stainless Steel												
Housing material	316 Stainless Steel												
Environmental rating	IP67												
Electromagnetic rating	CE compliant to EMC norm EN 61326:2014/A1:1998 RFI, EMI and ESD protection												
Electrical protection	Reverse polarity, over-voltage and short circuit protected												
Shock	1,000 g's according to IEC 60068-2-27												
Vibration	20 g's according to IEC 60068-2-6												
Weight	Approximately 12 oz.												

* Unregulated

APPLICATIONS

- Chemical processing
- Gas pressure measurement
- Oil field & offshore
- Mining
- Well head measurement

NOSHOK 621 and 622 Series transmitters are Factory Mutual and Canadian Standards Association approved for use in hazardous location applications as follows:

Explosion-proof with entity approved for: Class I, Division 1, Groups A, B, C and D. Dust Ignition-proof with entity approval for class II/III, Division 1, Groups E, F and G. Maximum electrical ratings 30V, 20 mA.

CE compliant with pressure equipment directive 2014/68/EU. ANSI/ISA-12.27.01, Approved single seal.



ORDERING INFORMATION								
SERIES	621	Stainless Steel threaded connection	622	316 Stainless Steel flush diaphragm	622H	Hastelloy C flush diaphragm		
PRESSURE RANGES	30vac	-30 inHg to 0 psig	5	0 psig to 5 psig	300	0 psig to 300 psig	6000	0 psig to 6,000 psig
	30/30	-30 inHg to 30 psig	10	0 psig to 10 psig	500	0 psig to 500 psig	8000	0 psig to 8,000 psig
	30/60	-30 inHg to 60 psig	15	0 psig to 15 psig	1000	0 psig to 1,000 psig	10000	0 psig to 10,000 psig
	30/100	-30 inHg to 100 psig	30	0 psig to 30 psig	1500	0 psig to 1,500 psig	15000	0 psig to 15,000 psig
	30/160	-30 inHg to 160 psig	60	0 psig to 60 psig	2000	0 psig to 2,000 psig	15A	0 psia to 15 psia
	30/200	-30 inHg to 200 psig	100	0 psig to 100 psig	3000	0 psig to 3,000 psig	100A	0 psia to 100 psia
	30/300	-30 inHg to 300 psig	200	0 psig to 200 psig	5000	0 psig to 5,000 psig		
	psig = gauge pressure psia = absolute pressure		Other ranges available on request		Note: 622 Series is available for pressure ranges up to 0 psig to 8,000 psig			
ACCURACY	1	±0.25% full scale (BFSL)						
OUTPUT SIGNALS	1	4 mA to 20 mA, 2-wire	3	1 Vdc to 5 Vdc, 3-wire, low power	31	0.5 Vdc to 4.5 Vdc 3-wire, low power		
	2	0 Vdc to 5 Vdc, 3-wire	5	0 Vdc to 10 Vdc, 3-wire				
PROCESS CONNECTIONS	2	1/4" NPT male	11	G 1/2 B *				
	8	1/2" NPT male	13	G 1 B (622 Series only, <30 psig)				
ELECTRICAL CONNECTIONS	6	1/2" NPT male conduit with 6' integral cable				37	1/2" NPT male conduit with 6' flying leads with epoxy seal	
OPTIONS	ST8	Threaded Orifice (621 Series only)	20	20' Cable/lead (attached to electrical connection 6 or 37)	30	30' Cable/lead (attached to electrical connection 6 or 37)		

Please consult your local NOSHOK Distributor or NOSHOK, Inc. for availability and delivery information.

* 622 Series only, G 1/2 B Flush (≥ 30 psig).

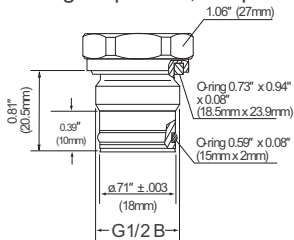
EXAMPLE

Series 621 Series
 Pressure range 0 psig to 500 psig
 Accuracy ±0.25% full scale (BFSL)
 Output signal 4 mA to 20 mA, 2-wire
 Process connection 1/2" NPT Male
 Electrical connection 1/2" NPT Male conduit with 6' integral cable
 Option Threaded Orifice

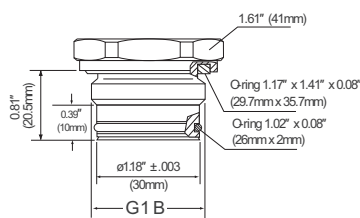
621 - 500 - 1 - 1 - 8 - 6 - ST8

Front flush process connections

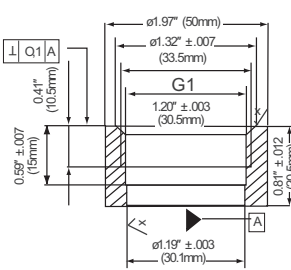
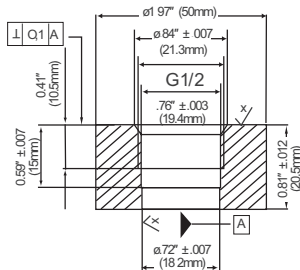
For ranges 0 psi to 30 psi through 0 psi to 8,000 psi



For ranges 0 to 30 psi and below



Flush corresponding port weld-on adapters



2-WIRE WIRING

V+	Red
V-	Black
Ground	Gray

3-WIRE WIRING

V+	Red
Common	Black
Output	Brown
Ground	Gray