



## Anybus Communicator - EtherCAT slave - PROFIBUS DP device

The Anybus Communicator EtherCAT slave – PROFIBUS DP device is an industrial protocol gateway that allows you to seamlessly transfer data between PLC control systems over EtherCAT and PROFIBUS networks.

Anybus Communicators are designed to ensure reliable, secure, and high-speed data transfer between different industrial Ethernet and Fieldbus networks. Very easy to install and deploy, the stand-alone gateways enable transparent data exchange between PLCs, allowing you to integrate legacy equipment into modern, high-performance networks without any changes to the hardware and only minimal changes to the software.

Anybus Communicators are built using the award-winning and proven Anybus NP40 industrial network processor providing network conformance, high performance, and reliability. When connecting between PLCs on different networks, extremely fast data cycling is enabled with data transfer of up to 1500 bytes in each direction, meeting most current control application needs as well as supporting future demands.

Quick installation is ensured thanks to the intuitive configuration, easy-to-understand documentation, and smart hardware and housing design.



### Excellent performance

- Instant data transfer - The time required for data transfer between two PLCs is made up of the cycle time of the first network plus the cycle time of the second network. The internal data transfer in the communicator is negligible because it corresponds to the natural fluctuations of the network cycle times (jitter).
- Hardware-accelerated endian conversion (byte swap) - Communicators can change the data representation (endianness) using hardware-accelerated endian conversion to ensure that data is represented correctly in each PLC. You can even convert different parts of the data area in different ways to handle different types of data. This has no impact on performance, relieves the PLC of the data conversion task, and simplifies PLC programming.

### Easy startup

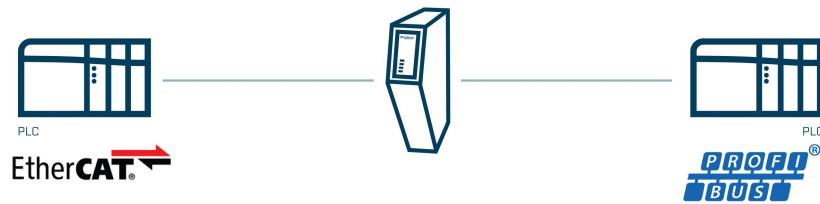
- Dedicated Ethernet configuration port - no special cables required.
- Intuitive web-based drag-and-drop configuration interface - no need to install additional software.
- Front-facing connectors make it easy to connect cables, and the slim form factor saves space on the DIN rail.
- Troubleshoot with powerful diagnostics, including live data monitor, status screen, and support package.

### Latest security features

- Secure boot functionality to detect firmware tampering and protect against malware attacks and infections.
  - Security switch that locks your configuration and prevents any unauthorized access.
- The ports used in production have been disabled to prevent malware from being loaded via the ports.

### For industrial environments

- Robust, compact housing.
- Industrial components are CE and UL tested and certified.
- Wide temperature range, -25°C to 70°C.
- Top-hat rail mounting for installation close to the connected devices, reducing wiring effort.



### **EtherCAT FEATURES**

- EtherCAT slave according to IEC 61158 Type 12 (ETG.1000)
- Transfer up to 1 486 bytes to and from EtherCAT
- Network cycle time down to 100 µs
- Supports CANopen over EtherCAT
- Addressing modes: Logical, Node, and Position
- Commands: APRD, ARMW, APWR, BRD, BWR, FPRD, FPRW, FPWR, FRMW, LRD, LRW, LWR
- Synchronization modes: Free Run
- Dual RJ45 Ethernet ports with 10/100 Mbit full duplex
- Daisy chaining with integrated switch

### **PROFIBUS DP DEVICE FEATURES**

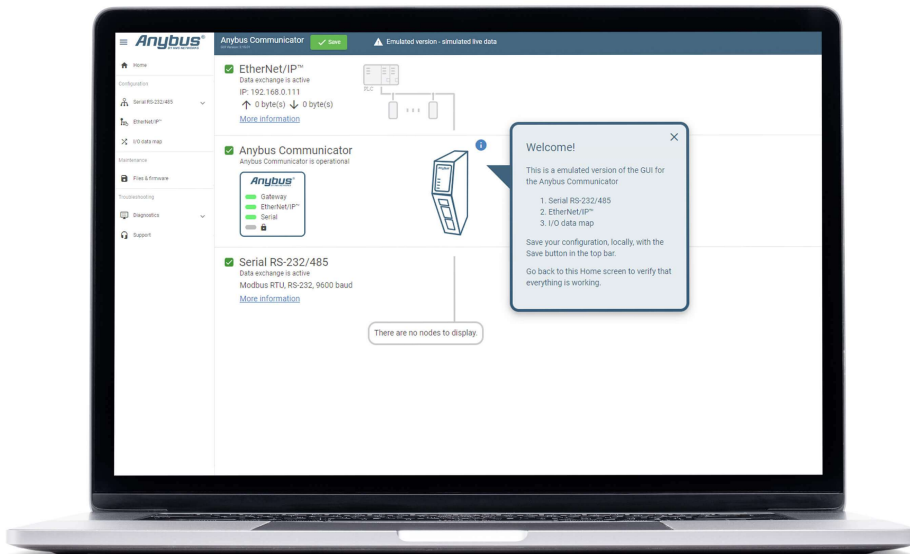
- PROFIBUS DPV1 & DPV0 Device (slave)
- Transfer up to 244 bytes to and from PROFIBUS (488 bytes total)
- Automatic baud rate detection up to 12 Mbit/s
- PROFIBUS slave address setting via onboard rotary switches or web interface
- Supports Sync and Freeze and Watchdog
- Supports I&M 0-3
- 1x D-sub 9-pin female PROFIBUS connector
- GSD file available

### **ANYBUS' SECOND-GENERATION GATEWAYS OFFER WORLD-LEADING USABILITY THANKS TO THE INTUITIVE GRAPHICAL USER INTERFACE (GUI).**

The User Interface enables you to:

- Change the configurations without installing additional software
- Use drag and drop functionality to configure the gateway
- Import or export files or firmware
- Analyze live data or export a log file for deeper analysis
- Use the support tab to open the relevant user guide or generate a customized support package
- Want to brand your interface? No problem! Customize the interface to meet your look





## INTERESTED?

Click on the link to watch the User Interface in action. You can even try the user Interface before you buy!

→ [Learn more](#)

## GENERAL

<b>Dimensions (L x W x H) with serial and power connector</b>	98 x 27 x 144 mm 3.85 x 1.06 x 5,67 in
<b>Weight</b>	150 grams, 0.33 lb
<b>Buttons and switches</b>	Reset button and security switch
<b>LEDs</b>	Gateway, Network 1 & Network 2
<b>IP rating</b>	IP20
<b>Housing material</b>	PC ABS, UL 94 VO
<b>Mounting</b>	DIN rail (35 * 7,5/15)

## ENVIRONMENT

<b>Operating temperature</b>	-25 to 70° C, -13 to 158° F
<b>Storage temperature</b>	-40 to 85° C, -40 to 185° F
<b>Relative humidity</b>	0-95% non condensing
<b>Installation altitude</b>	Up to 2 000 m

## POWER

<b>Input voltage</b>	12 - 30 VDC
----------------------	-------------

<b>Current consumption</b>	Typical: 160 mA @ 24V Max: 400 mA @ 12V
<b>Power connector</b>	3-pin plug with screw terminal
<b>Protection</b>	Reverse voltage protection and short circuit protection

#### ETHERNET PORTS

<b>Ports</b>	2 x Ethernet ports per Ethernet protocol
<b>Isolation</b>	Galvanic isolation
<b>Bitrate</b>	10/100 Mbit full duplex
<b>Connector</b>	RJ45
<b>Switch.</b>	Dual port cut-through switch

#### ETHERCAT

<b>Mode</b>	EtherCAT slave according to IEC 61158 Type 12 (ETG.1000)
<b>Addressing modes</b>	Logical, node, and position
<b>Synchronization modes</b>	Free run
<b>Input data size</b>	1 486 bytes
<b>Output data size</b>	1 486 bytes
<b>Network redundancy</b>	Device Level Ring (DLR), beacon-based
<b>Minimum cycle time</b>	100 µs
<b>Features</b>	Supports CANopen over EtherCAT (CoE)
<b>ESI File</b>	Available

#### PROFIBUS

<b>Mode</b>	PROFIBUS DPV1 Device (slave)
<b>Input data size</b>	244 bytes
<b>Output data size</b>	244 bytes
<b>Baude rate</b>	Automatic baud rate detection up to 12 Mbit/s
<b>Rotary switches</b>	PROFIBUS slave address setting via onboard rotary switches or web interface
<b>Features</b>	Supports Sync and Freeze and Watchdog
<b>I&amp;M records</b>	Manufacturer data (I&M0), Tag information (I&M1), Date/Time (I&M2), Description (I&M3)
<b>Connector</b>	1x D-sub 9-pin female PROFIBUS connector

<b>GSD</b>	GSD file available
------------	--------------------

#### CERTIFICATIONS AND STANDARDS

<b>UL</b>	cULUS file number E214107
<b>CE</b>	2014/30/EU
<b>KC</b>	R-R-ABJ-Communicator (Pending for EtherCAT MainDevice)
<b>EMC</b>	EN 61000-6-2 EN 61000-4-2 EN 61000-4-3 EN 61000-4-4 EN 61000-4-5 EN 61000-4-6 EN 61000-6-4 EN 55032
<b>Environment</b>	IEC 60068-2-1 Ab IEC 60068-2-2 Bb IEC 60068-2-1 Ab IEC 60068-2-2 Bb IEC 60068-2-14 Nb IEC 60068-2-30 Db IEC 60068-2-78 Cab IEC 60068-2-78 Cab
<b>Vibration and shock</b>	IEC 60068-2-27 IEC 60068-2-6
<b>Waste certification</b>	WEE

#### CONFIGURATION

<b>Configuration software</b>	Web based configuration
<b>Configuration ports</b>	Dedicated 10/100 Mbit RJ45 Ethernet configuration port and Ethernet ports

#### SECURITY

<b>Secure boot</b>	Ensures software authenticity
<b>Security switch</b>	Physical switch that enable/disable access to the web based configuration interface

#### PRODUCT PACKAGING

<b>Content</b>	Gateway, power connector, start-up guide, compliance information sheet
<b>Box material</b>	Cardboard

## MEAN TIME BETWEEN FAILURE

<b>MTBF</b>	> 1 500 000 h, Telcordia Method I Case 3 at 30° C
-------------	---

---

File	Version	Size	Read online
------	---------	------	-------------

---

## Ordering Information

**ORDER CODE: ABC4021**

**WARRANTY:** 5 years

For purchasing instructions and terms and conditions, see: [How to buy](#).

---

Copyright © 2020 HMS Industrial Networks - All rights reserved.

