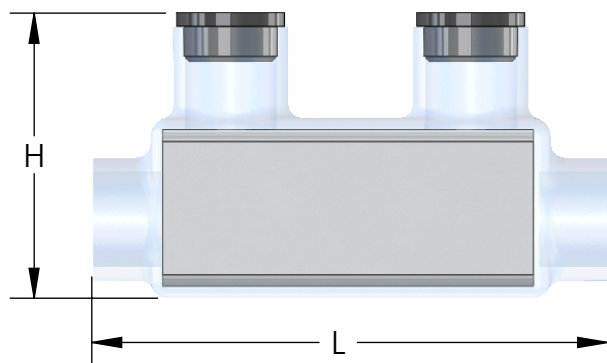


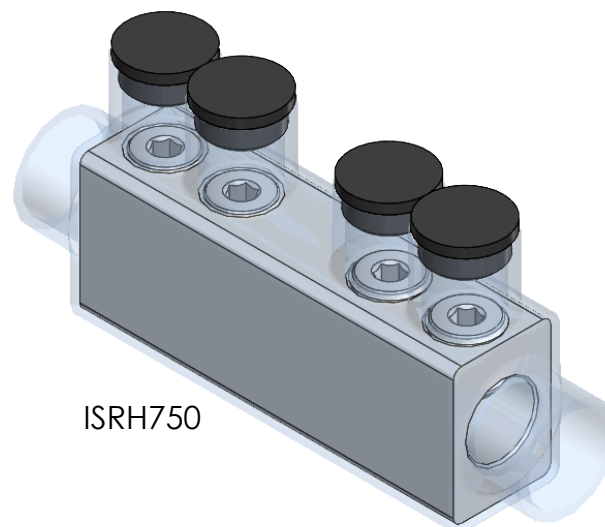
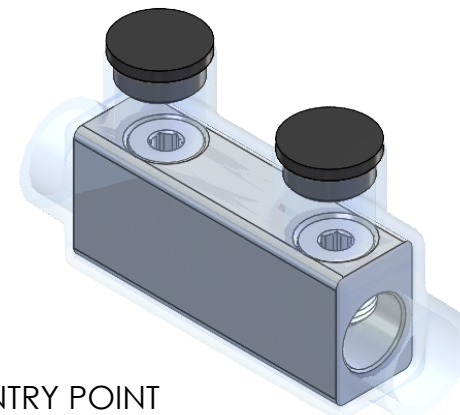


REMOVABLE CAP  
TO TIGHTEN SCREW  
(REPLACE WHEN COMPLETE)

INTERNAL HEX  
PRESSURE SCREW



WIRE ENTRY POINT  
PRE-FILLED W/ OXIDE INHIBITOR



ISRH750

PART #	WIRE RANGE	HEX SIZE	L	H	W
ISR1/0C	1/0-14	3/16	3.25	1.48	.90
ISR250C	250-6	5/16	4.00	1.90	1.19
ISR350C	350-6	5/16	4.47	2.20	1.32
ISR500C	500-4	5/16	4.62	3.00	1.62
ISR600C	600-6	5/16	5.83	3.30	1.75
ISRH750C	750-1/0	5/16	7.25	3.50	1.75

#### NOTES:

1. CONNECTOR MANUFACTURED FROM 6061-T6 ALUMINUM ALLOY.
2. UL LISTED PER UL486A/B SPECIFICATIONS FOR 600V.
3. DUAL RATED FOR 90°C COPPER AND/OR ALUMINUM CONDUCTOR.
4. COLD TEMPERATURE RATED TO -45°C.
5. HIGH DIELECTRIC STRENGTH INSULATION IS ABRASION AND CHEMICAL RESISTANT.

CONTACT NSi FOR SALES @ 800.321.5847



**POLARIS**  
SALES . CO . INC

PROPRIETARY AND CONFIDENTIAL

11625 PROSPEROUS DRIVE ODESSA, FL 33556

THE INFORMATION CONTAINED IN THIS  
DRAWING IS THE SOLE PROPERTY OF  
POLARIS SALES CO. INC. ANY  
REPRODUCTION IN PART OR AS A WHOLE  
WITHOUT THE WRITTEN PERMISSION OF  
POLARIS SALES CO. INC. IS PROHIBITED.

TITLE:

INSULATED SPLICE  
CONNECTOR SERIES

NAME DATE  
DRAWN BY T. MITCHELL 12/2021

DWG. NO.

ISRC SERIES

MATERIAL: N/A

SCALE: N/A

SHEET: 1 OF 1