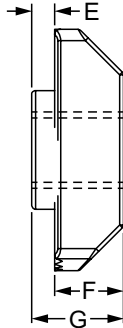
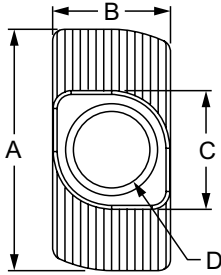


Standard Drop-In T-Nut

- Loads from profile end or side
- Ideal for captivated profiles
- Ridges bite into profile surface for strong connection
- Easy to reposition



10 & 25 Series Standard Drop-In T-Nut

Part No.	Series	Material	Finish	A	B	C	D (Thread)	E	F	G	Weight
14162	10 25	Steel	Bright Zinc	11.50mm	5.70mm	5.70mm	10-32	1.00mm	3.20mm	4.20mm	.0014 kg
14164	10 25			11.50mm	5.80mm	5.70mm	M4 x 0.7	1.00mm	3.20mm	4.20mm	.0014 kg
14166	10 25	Stainless-Steel	Stainless	11.50mm	5.70mm	5.70mm	M4 x 0.7	1.00mm	3.20mm	4.20mm	.0014 kg

15 & 40 Series Standard Drop-In T-Nut

Part No.	Series	Material	Finish	A	B	C	D (Thread)	E	F	G	Weight
3930	15 40	Steel	Bright Zinc	.620"	.305"	.308"	M5 x 0.8	.059"	.180"	.239"	.007 lb
3931	15 40		Bright Zinc	.620"	.305"	.308"	M6 x 1.0	.059"	.180"	.239"	.006 lb
3932	15 40		Bright Zinc	.620"	.305"	.308"	10-32	.059"	.180"	.239"	.007 lb
3933	15 40		Bright Zinc	.620"	.305"	.308"	1/4-20	.059"	.180"	.239"	.007 lb
13114	15 40		Bright Zinc	16.00mm	7.90mm	7.90mm	M4 x 0.7	3.00mm	4.70mm	7.70mm	.0036 kg
13116	15 40		Bright Zinc	16.00mm	7.90mm	7.90mm	M5 x 0.8	3.00mm	3.00mm	7.70mm	.0041 kg
13119	15 40		Bright Zinc	16.00mm	7.90mm	7.90mm	M6 x 1.0	3.00mm	4.70mm	7.70mm	.0037 kg
14165	15 40	Bright Zinc	16.00mm	7.90mm	7.90mm	1/4-20	3.00mm	4.70mm	7.70mm	.0036 kg	

30 Series Standard Drop-In T-Nut

Part No.	Series	Material	Finish	A	B	C	D (Thread)	E	F	G	Weight
13118	30	Stainless-Steel	Stainless	16.00mm	8.00mm	8.00mm	M6 x 1.0	1.50mm	4.50mm	6.00mm	.0036 kg
13111	30	Stainless-Steel	Stainless	15.80mm	7.90mm	7.70mm	1/4-20	1.50mm	4.50mm	6.00mm	.0027 kg
13113	30	Steel	Bright Zinc	16.00mm	8.00mm	8.00mm	M4 x 0.7	1.50mm	4.50mm	6.00mm	.0041 kg
13115	30	Steel	Bright Zinc	16.00mm	8.00mm	8.00mm	M5 x 0.8	1.50mm	4.50mm	6.00mm	.0034 kg
13117	30	Steel	Bright Zinc	16.00mm	8.00mm	8.00mm	M6 x 1.0	1.50mm	4.50mm	6.00mm	.0032 kg
13112	30	Steel	Bright Zinc	16.00mm	8.00mm	7.80mm	10-32	1.70mm	4.70mm	6.40mm	.0036 kg
13110	30	Steel	Bright Zinc	16.00mm	8.00mm	8.00mm	1/4-20	1.50mm	4.50mm	6.00mm	.0032 kg

Standard Drop-in T-Nut (Continued)

45 Series Standard Drop-In T-Nut

Part No.	Series	Material	Finish	A	B	C	D (Thread)	E	F	G	Weight
13123	45	Steel	Bright Zinc	19.60mm	9.80mm	9.90mm	M4 x 0.7	3.00mm	5.50mm	8.50mm	.0077 kg
13127	45			19.60mm	9.80mm	9.90mm	M5 x 0.8	3.00mm	5.50mm	8.50mm	.0073 kg
13129	45			19.60mm	10.00mm	10.00mm	M6 x 1.0	3.00mm	5.70mm	8.70mm	.0068 kg
13132	45			19.60mm	10.00mm	10.00mm	M8 x 1.25	3.00mm	5.70mm	8.70mm	.0054 kg
13122	45			19.60mm	9.70mm	9.90mm	10-32	3.00mm	5.70mm	8.70mm	.0075 kg
13120	45			19.60mm	9.70mm	9.90mm	1/4-20	3.00mm	5.70mm	8.70mm	.0068 kg
13124	45			19.60mm	9.70mm	9.90mm	5/16-18	3.00mm	5.70mm	8.70mm	.0059 kg
13130	45	Stainless-Steel	Stainless	19.60mm	9.90mm	9.90mm	M6 x 1.0	3.00mm	5.70mm	8.70mm	.0098 kg
13133	45			19.60mm	9.90mm	9.90mm	M8 x 1.25	3.00mm	5.70mm	8.70mm	.0059 kg
13121	45			19.20mm	9.80mm	9.80mm	1/4-20	3.00mm	5.70mm	8.70mm	.0068 kg
13125	45			19.20mm	9.90mm	9.90mm	5/16-18	3.00mm	5.50mm	8.50mm	.0064 kg

