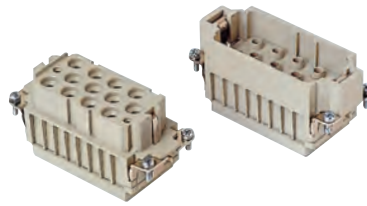


# CX 12 poles (40A - 690V) + 2 poles (10A - 250V) + ⊕

enclosures: size "77.27"	page:
C-TYPE IP65/IP66	402 - 411
C7 IP67, two levers	439 - 440
V-TYPE IP65/IP66, single lever	454 - 458
BIG hoods	470 - 471
T-TYPE IP65 insulating	484 - 485
T-TYPE / W IP66/IP69 insulating	491
HYGIENIC T-TYPE / H IP66/IP69	503
HYGIENIC T-TYPE / C IP66/IP69, -50 °C	508
W-TYPE for aggressive environments	523
E-Xtreme® corrosion proof	534 - 535, 544, 554 - 555
EMC	580
Central lever	609 - 611
LS-TYPE	622 - 623
IP68	640 - 643
panel supports: COB	page: 652 - 653

inserts, crimp connections



40A and 10A crimp contacts silver and gold plated



description	part No.	part No.
without contacts (to be ordered separately)		
female inserts for female contacts	<b>CXF 12/2</b>	
male inserts for male contacts	<b>CXM 12/2</b>	
40A female crimp contacts		
1,5 mm <sup>2</sup> AWG 16		<b>CXFA 1.5</b>
2,5 mm <sup>2</sup> AWG 14		<b>CXFA 2.5</b>
4 mm <sup>2</sup> AWG 12		<b>CXFA 4.0</b>
6 mm <sup>2</sup> AWG 10		<b>CXFA 6.0</b>
40A male crimp contacts		
1,5 mm <sup>2</sup> AWG 16		<b>CXMA 1.5</b>
2,5 mm <sup>2</sup> AWG 14		<b>CXMA 2.5</b>
4 mm <sup>2</sup> AWG 12		<b>CXMA 4.0</b>
6 mm <sup>2</sup> AWG 10		<b>CXMA 6.0</b>
10A female contacts		
0,14-0,37 mm <sup>2</sup> AWG 26-22 identification No. 1		<b>CDFA 0.3</b>
0,5 mm <sup>2</sup> AWG 20 identification No. 2		<b>CDFA 0.5</b>
0,75 mm <sup>2</sup> AWG 18 identification No. ②		<b>CDFA 0.7</b>
1 mm <sup>2</sup> AWG 18 identification No. 3		<b>CDFA 1.0</b>
1,5 mm <sup>2</sup> AWG 16 identification No. 4		<b>CDFA 1.5</b>
2,5 mm <sup>2</sup> AWG 14 identification No. 5		<b>CDFA 2.5</b>
10A male contacts		
0,14-0,37 mm <sup>2</sup> AWG 26-22 identification No. 1		<b>CDMA 0.3</b>
0,5 mm <sup>2</sup> AWG 20 identification No. 2		<b>CDMA 0.5</b>
0,75 mm <sup>2</sup> AWG 18 identification No. ②		<b>CDMA 0.7</b>
1 mm <sup>2</sup> AWG 18 identification No. 3		<b>CDMA 1.0</b>
1,5 mm <sup>2</sup> AWG 16 identification No. 4		<b>CDMA 1.5</b>
2,5 mm <sup>2</sup> AWG 14 identification No. 5		<b>CDMA 2.5</b>

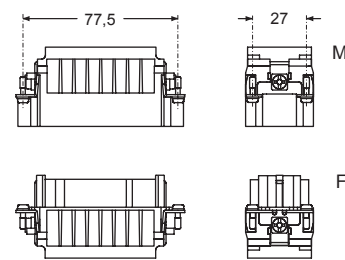
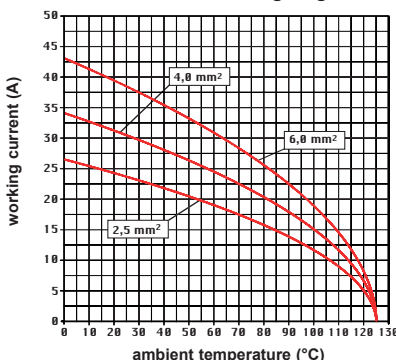
silver plated

+ for basic or high thickness gold plating, please refer to page 674

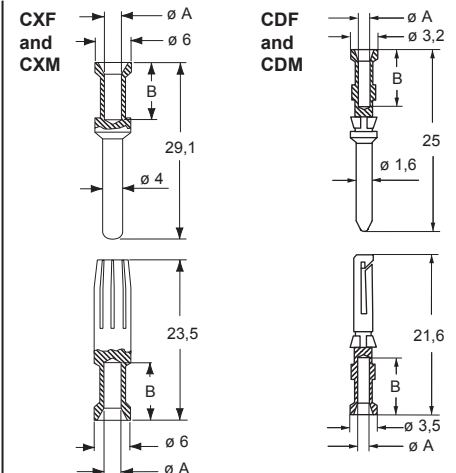
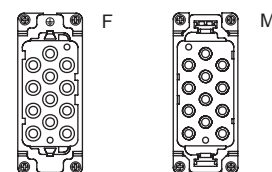
gold plated+

- characteristics according to EN 61984:
- 40A 690V 8kV 3**
- 10A 160V 2,5kV 3**
- 10A 250V 4kV 2**
- certified
- rated voltage according to UL/CSA: 600V
- insulation resistance: ≥ 10 GΩ
- ambient temperature limit: -40 °C ... +125 °C
- made of self-extinguishing thermoplastic resin UL 94V-0
- mechanical life: ≥ 500 cycles
- contact resistance: ≤ 0,3 mΩ (12 poles), ≤ 1 mΩ (2 poles)
- for max. current load see the connector inserts derating diagram below; for more information see page 28

**CX 12/2 power poles connector inserts**  
Maximum current load derating diagram



contacts side (front view)



**CXF and CXM contacts**

conductor section	conductor slot	conductors stripping length
mm <sup>2</sup>	Ø A (mm)	B (mm)
1,5	1,8	9
2,5	2,2	9
4	2,85	9,6
6	3,5	9,6

**CDF and CDM contacts**

0,14-0,37	0,9	8
0,5	1,1	8
0,75	1,3	8
1,0	1,45	8
1,5	1,8	8
2,5	2,2	6

- it is recommended to crimp the contacts with crimping tools homologated by ILME (please see the crimping tool section 40A contacts, CXF, CXM series and 10A contacts CDF, CDM series on pages 708 - 741